

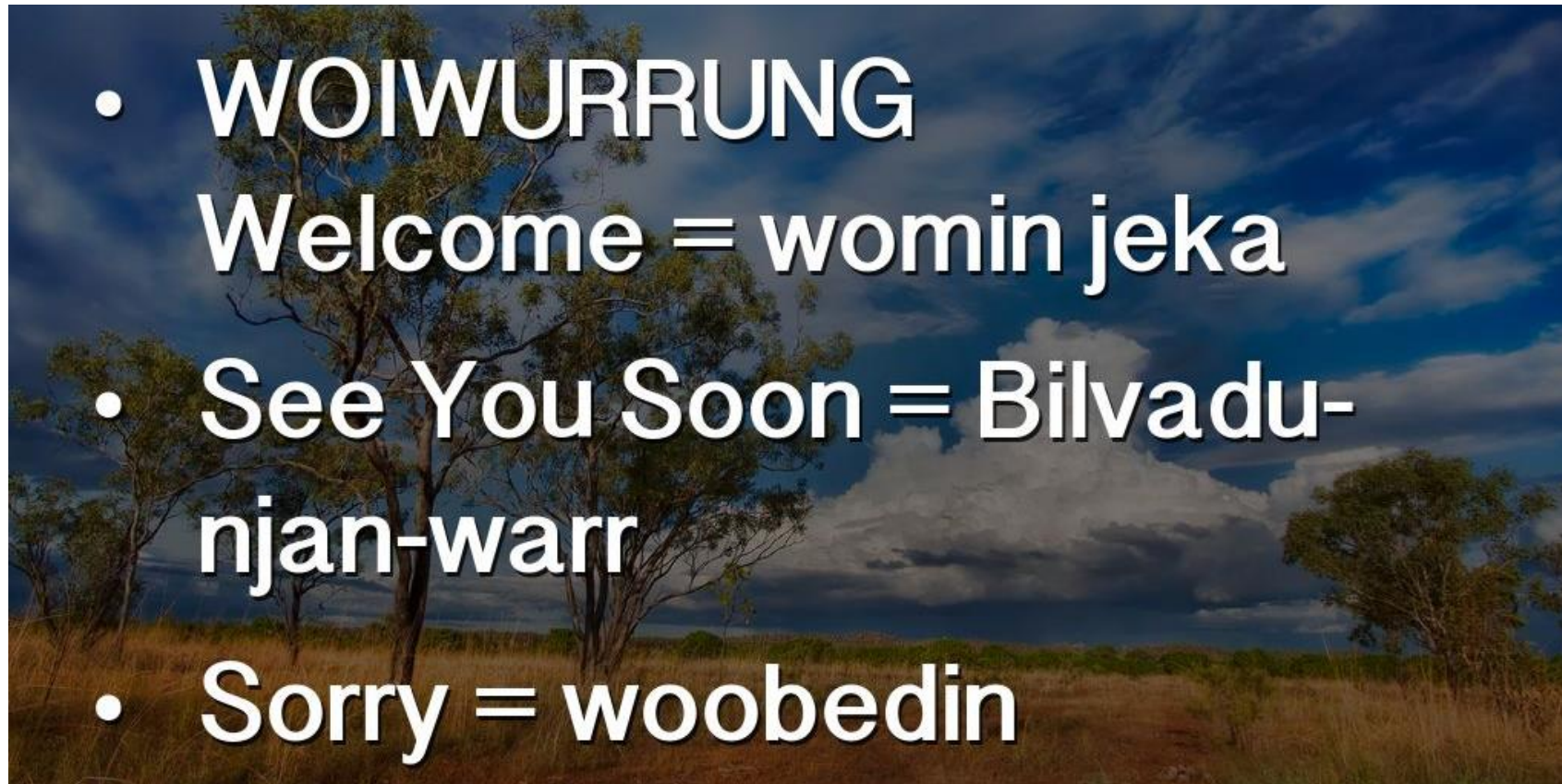
INVESTMENT LOGIC MAPPING (ILM) VS EVALUATION LOGIC MODELLING (ELM)

CHARLIE TULLOCH, DIRECTOR,
POLICY PERFORMANCE

AES24



Acknowledging country with a few words...



For those who don't know me...



Rescuer of Roxy



Husband to Jess



Tennis tragic



Father of Lola and Ned

Recently became an Adelaidean



My ambitions for this discussion...

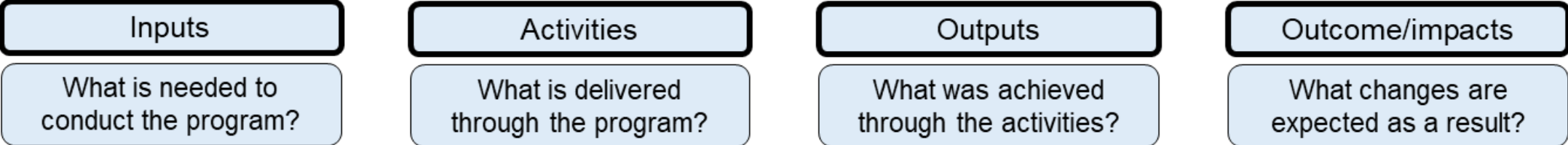
“That you have the chance to sit back, relax and listen to this middle-aged white guy desperately try to make a Treasury logic process seem kinda cool...”



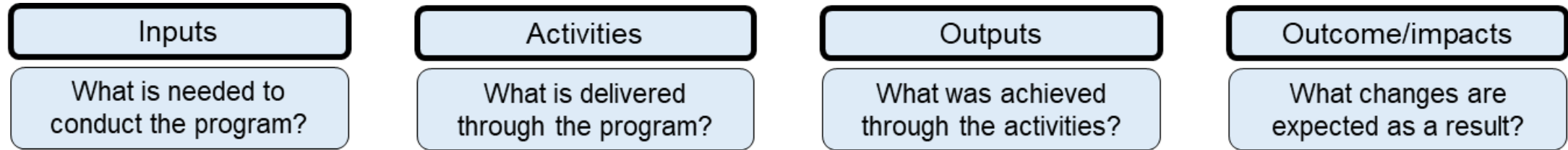
Turning to logic modelling... and particularly facilitation



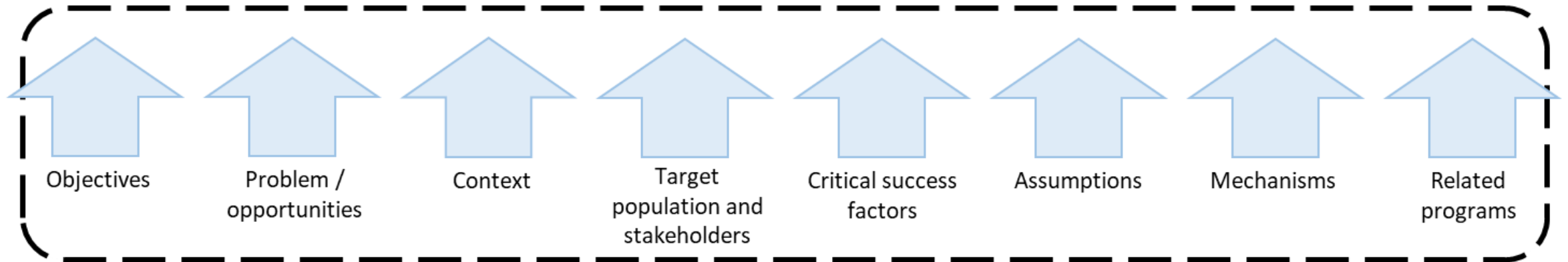
The basics of linear evaluation logic modelling (ELM)



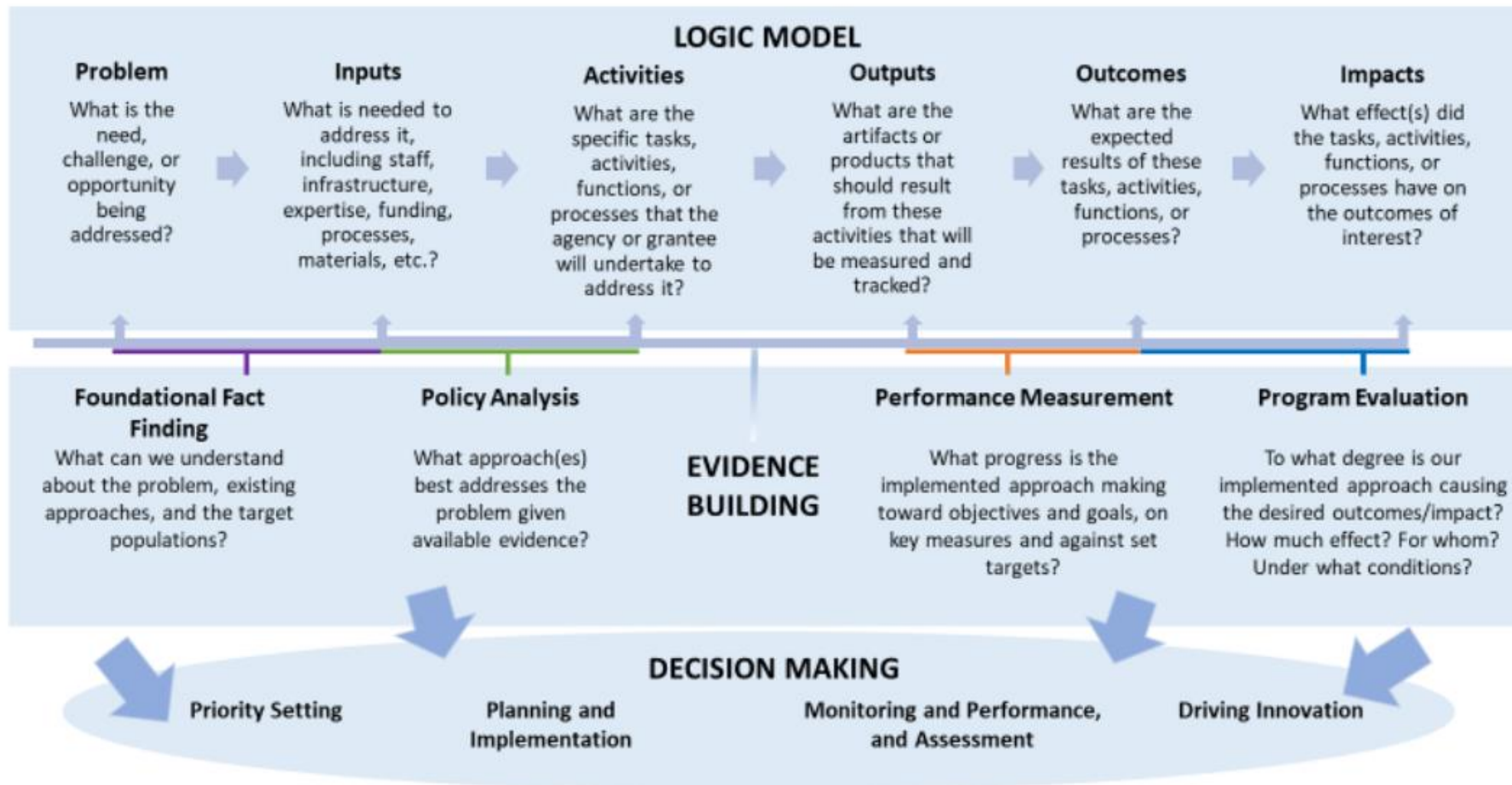
The basics can be extended...



Optional additional elements



How ELM fits into the broader delivery context...



But wait, what is Investment Logic Modelling?

Developed by the Victorian Government in 2002 to bring stakeholders together to plan and support business case development.

ILM workshops explore potential investments to better understand the issues they are seeking to address.

Investment Management Standard 2017

Technical Guide for Facilitators

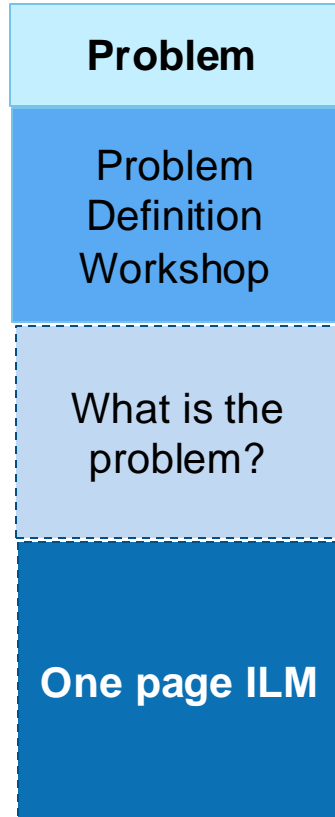
Problem Definition workshop

[Facilitator guidance and templates](#) | [Department of Treasury and Finance Victoria \(dtf.vic.gov.au\)](#)

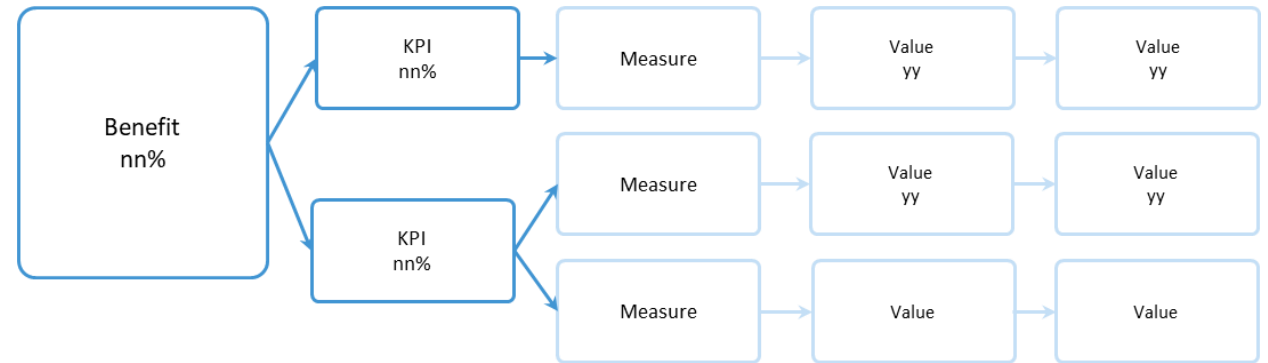
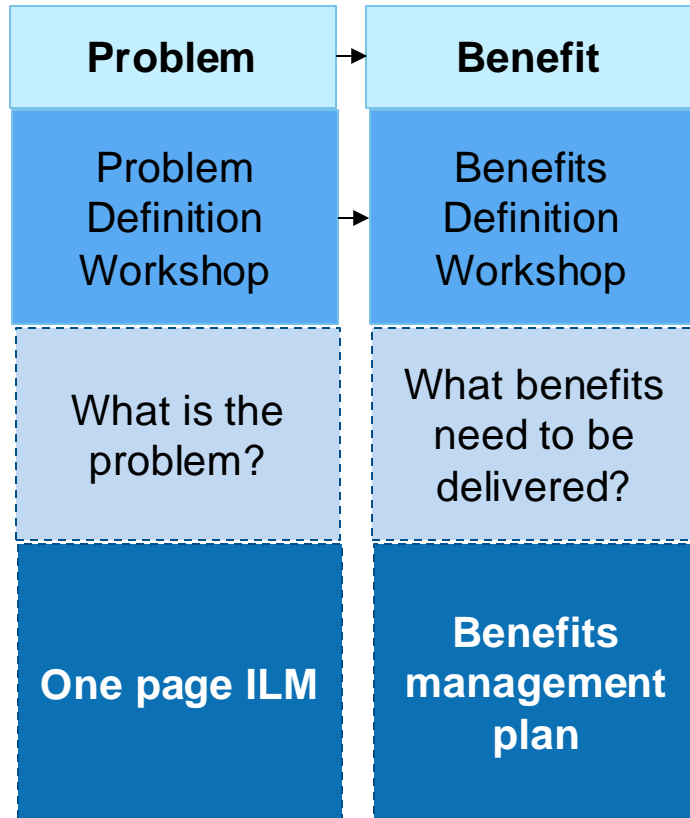
The world before ILMs



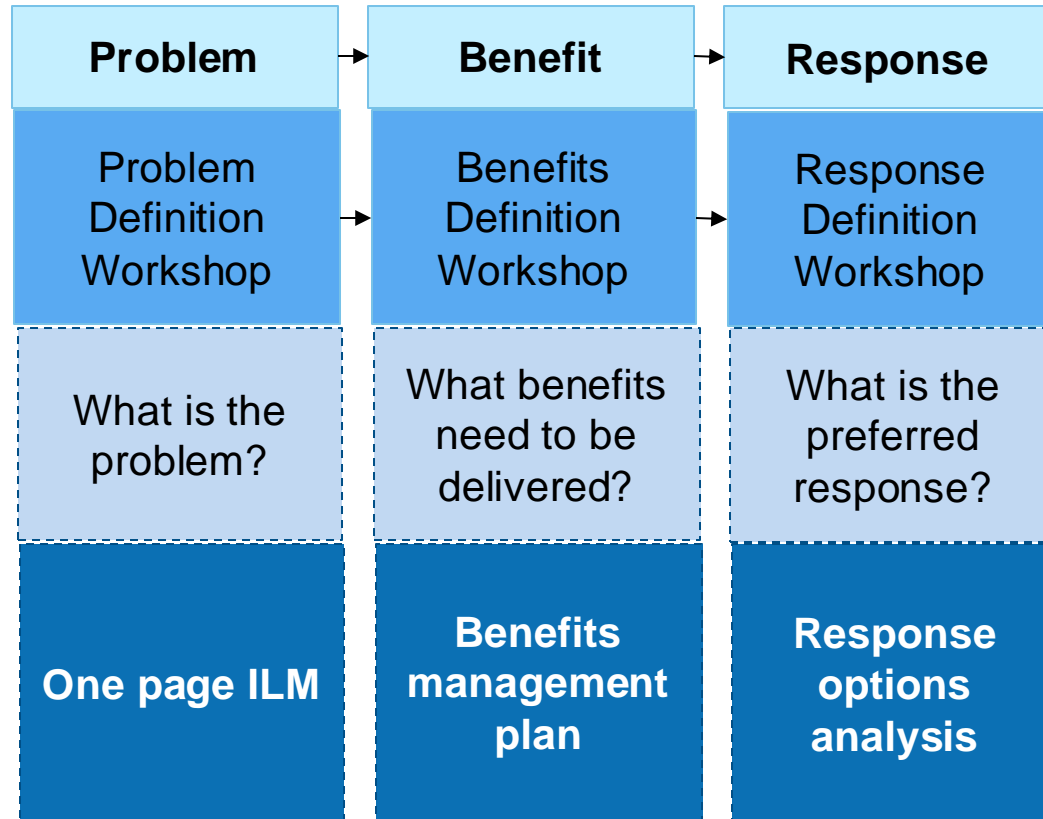
Key parts of the ILM process



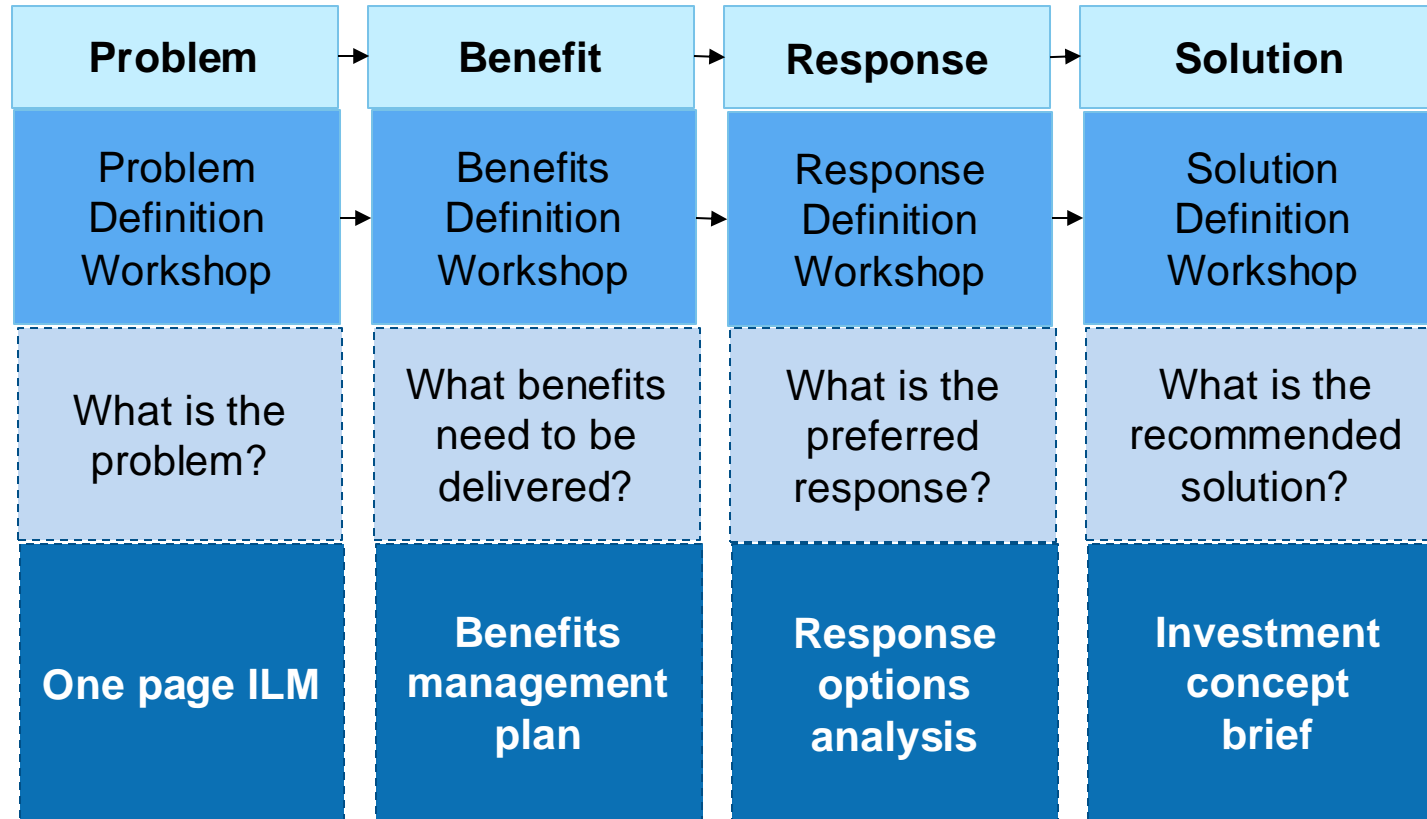
Key parts of the ILM process



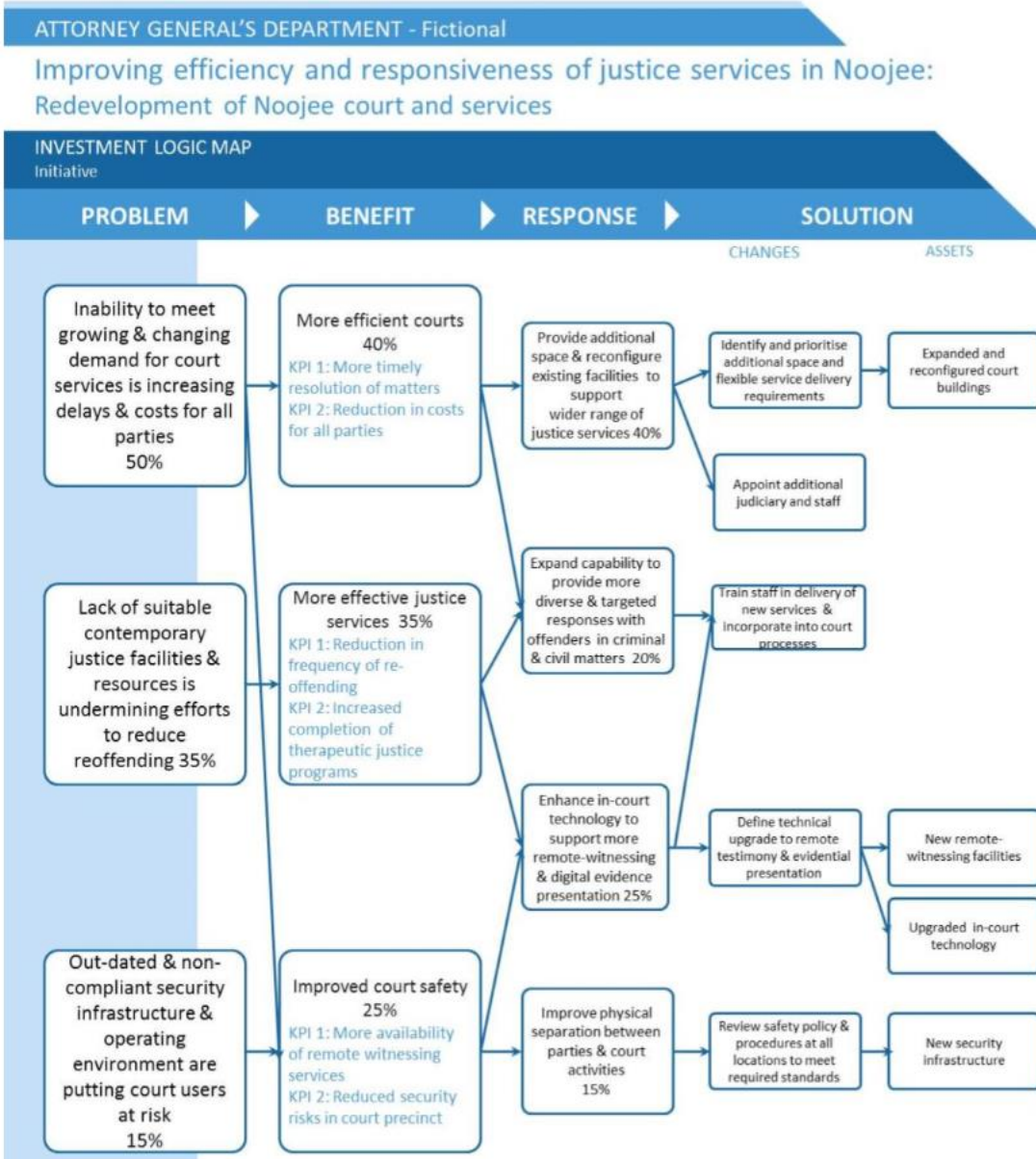
Key parts of the ILM process



Key parts of the ILM process



How does this look in practice?



Accreditation is needed



Where to learn more...

<https://www.dtf.vic.gov.au/infrastructure-investment/investment-management-standard>



Department of Treasury and Finance Victoria → Infrastructure investment → Investment management standard

The investment management standard (IMS) is a tool for agencies to confirm an investment need and help shape a proposal prior to commencing a business case.

It is grounded on three principles:

- The best way to pool knowledge is through an informed discussion that brings together those people with the most knowledge of a subject
- The 'investment story' is best depicted on a single page using language and concepts that can be understood by a lay person
- Each investment should have clearly defined benefits that align with the outcomes the organisation is seeking.

IMS 'line of enquiry'

The IMS involves a series of up to four facilitated workshops which step participants through a 'line of enquiry' and helps decision-makers determine whether:

- there is a real, evidence-based problem that needs to be addressed, now and by this government
- the benefits which will be delivered through successfully addressing the problem are of high value to the organisation and the community
- the benefits' KPIs are meaningful, measurable and attributable to the investment and are worth tracking and reporting
- the way the problem will be addressed is strategic, feasible, and innovative
- the solution is likely to be delivered within time and budget constraints
- the solution can be applied flexibly to manage uncertainty and adapt to changing conditions and demand.



SO, DID I MAKE TREASURY ALL COOL AGAIN?



ONE MORE FOR FUN



“Bilvadu njan-warr (see you soon)”

Charlie Tulloch
Director
Policy Performance

0431 474 979

charlie@policyperformance.com.au
www.policyperformance.com.au

