



Sign here: Supporting Deaf participation in evaluation

Australasian Evaluation
Society conference

18 Sept 2024

Dr Susie Fletcher



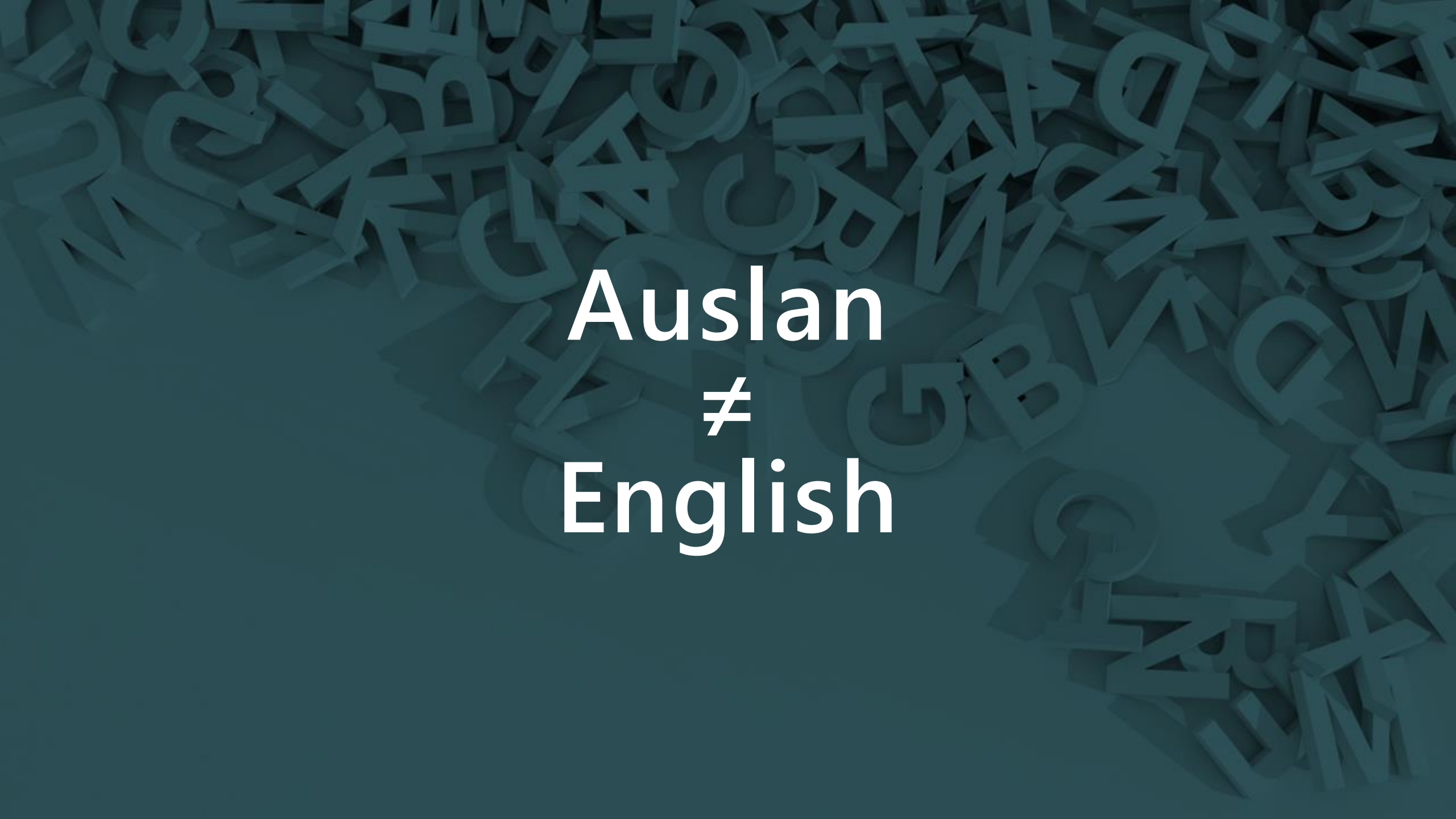
Australian Healthcare Associates
Australia's largest health & human services consulting firm



Photo credit: Deaf Connect

Culturally and
linguistically
diverse





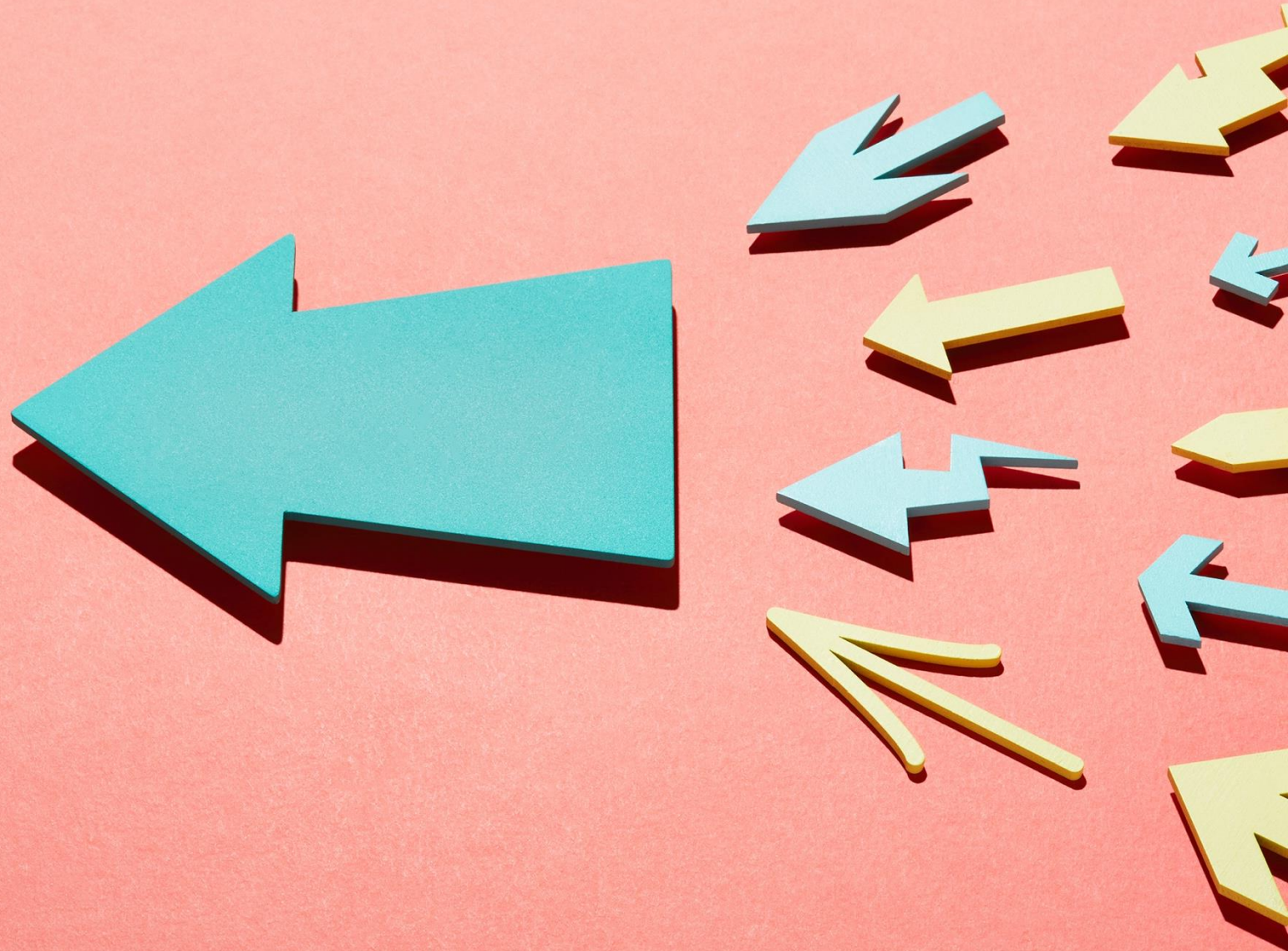
Auslan
≠
English

Translation



Photo credit: Deaf Connect

Multiple ways to participate





Who usually interprets at your primary care appointments?

Survey



Who usually interprets at your primary care appointments?

- 1. A family member
- 2. A friend
- 3. A NAATI-certified interpreter from an interpreting service
- 4. A NAATI-certified interpreter booked directly under their ABN
- 5. No one
- 6. Other (please expand if you wish)

Survey



Who usually interprets at your primary care appointments?

- 1. A family member
- 2. A friend
- 3. A NAATI-certified interpreter from an interpreting service
- 4. A NAATI-certified interpreter booked directly under their ABN
- 5. No one
- 6. Other (please expand if you wish)

Working with Auslan interpreters





**Ask about
preferred
interpreters**





Modified Auslan

Photo credit: Deafblind Victoria

Book in advance



**telephone
interpreting
is not an option**



**Video OK,
in-person
preferred**



Budget
appropriately





Training

Deaf Connect

deafconnect.org.au

Expression Australia

expression.com.au

A person in a dark shirt is standing in a classroom, signing. In the background, a whiteboard displays the text "Learning in a Visual Environment" and "Participate". A clock is visible on the wall to the left. The scene is dimly lit, with the person and the whiteboard text being the primary focus.

Training

ASLIA

Australian Sign Language
Interpreters' Association

aslia.com.au



THANK YOU

susie.fletcher@ahaconsulting.com.au