

---

# A SPRINT, NOT A MARATHON

Rapid Evaluation as an approach for generating fast evidence and insights

MONDAY, 14 OCTOBER 2024





# DEFINING RAPID EVALUATION



# WHEN TO DO A RAPID EVALUATION



In response to a  
critical event



Program is under  
scrutiny



Impending policy,  
legislative or  
regulatory change

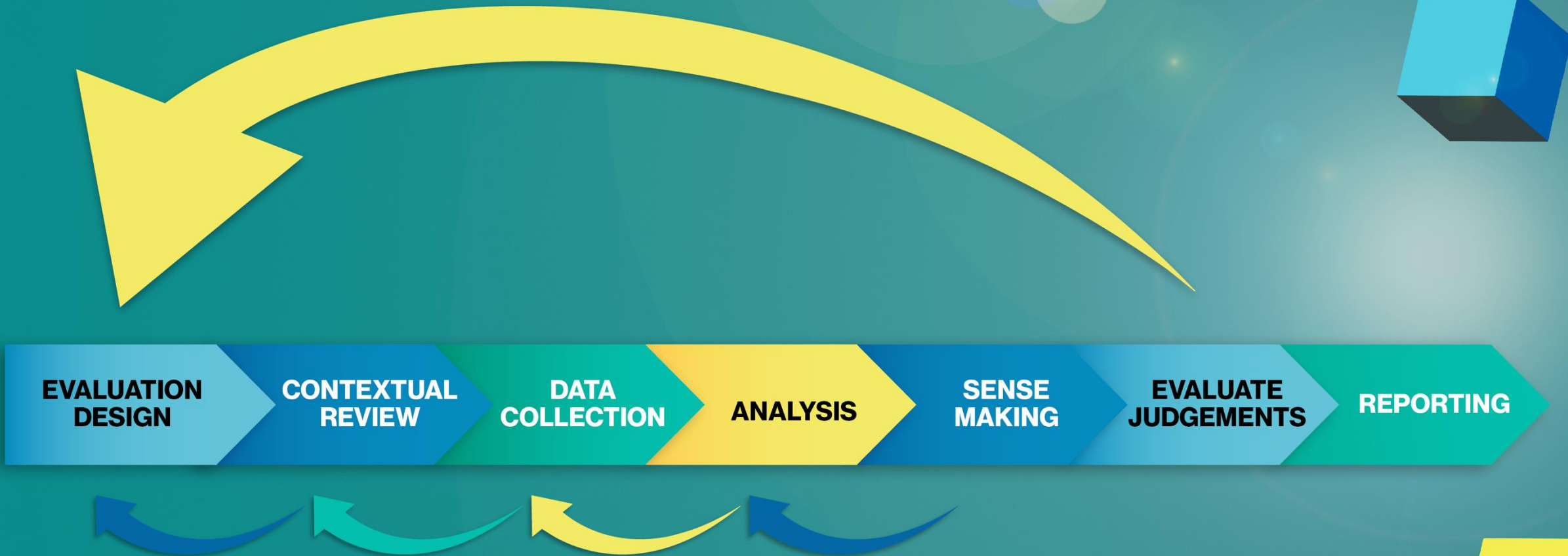
# FEATURES OF A RAPID EVALUATION



# EVALUATION PROCESS



# INTERLINKED AND CIRCULAR EVIDENCE

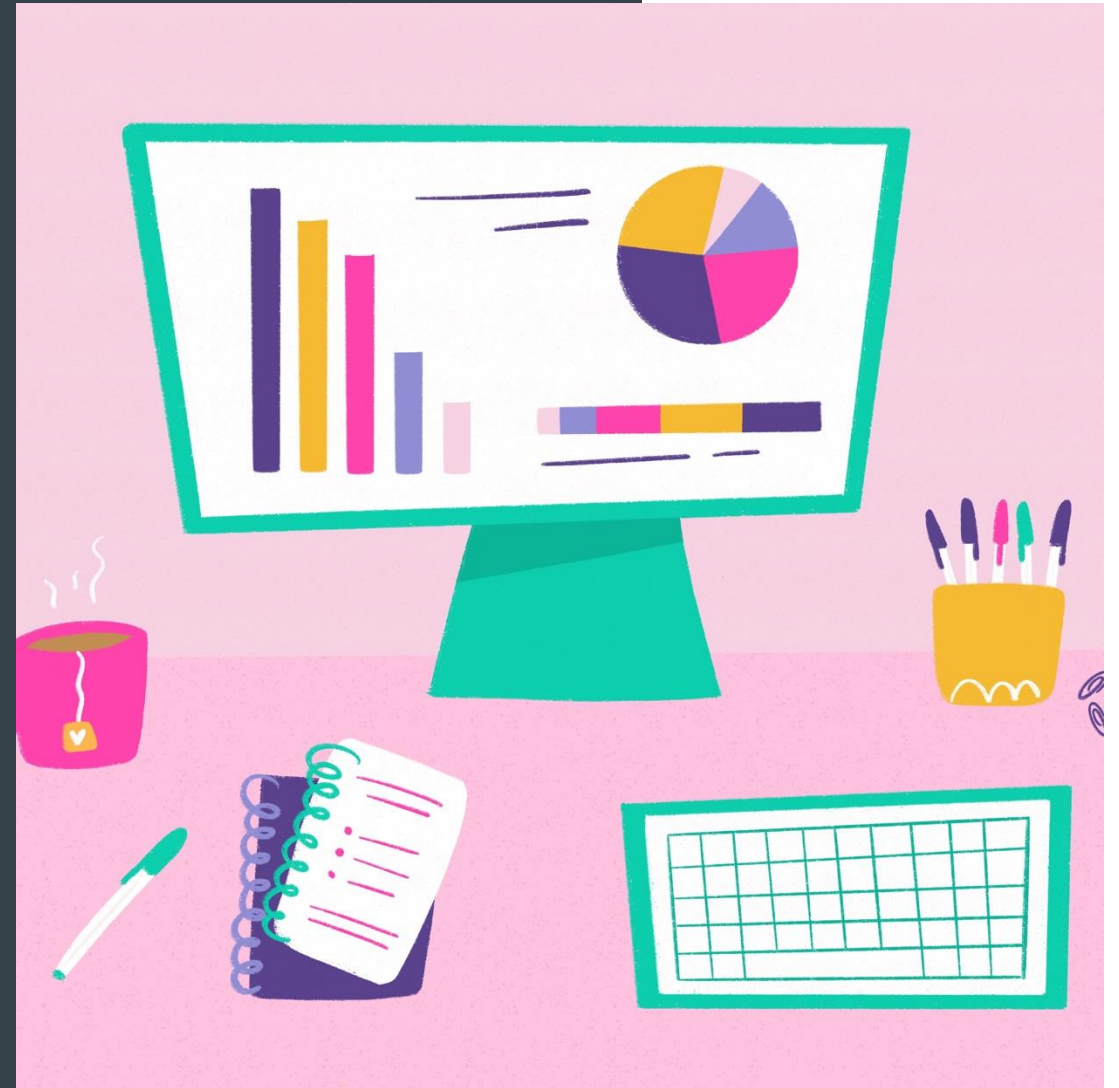


## METHODS THAT CAN GATHER DATA QUICKLY

✓ Reviewing existing documents and data, undertaking interviews

X Surveys

You may not have time for ethics approval... but still need to act ethically!



---

# RAPID EVALUATION OF A FUND TO SUPPORT CHILDREN AFFECTED BY FAMILY VIOLENCE



The context: Fund to support children affected by family violence

The trigger for rapid evaluation: Program was under scrutiny due to low uptake

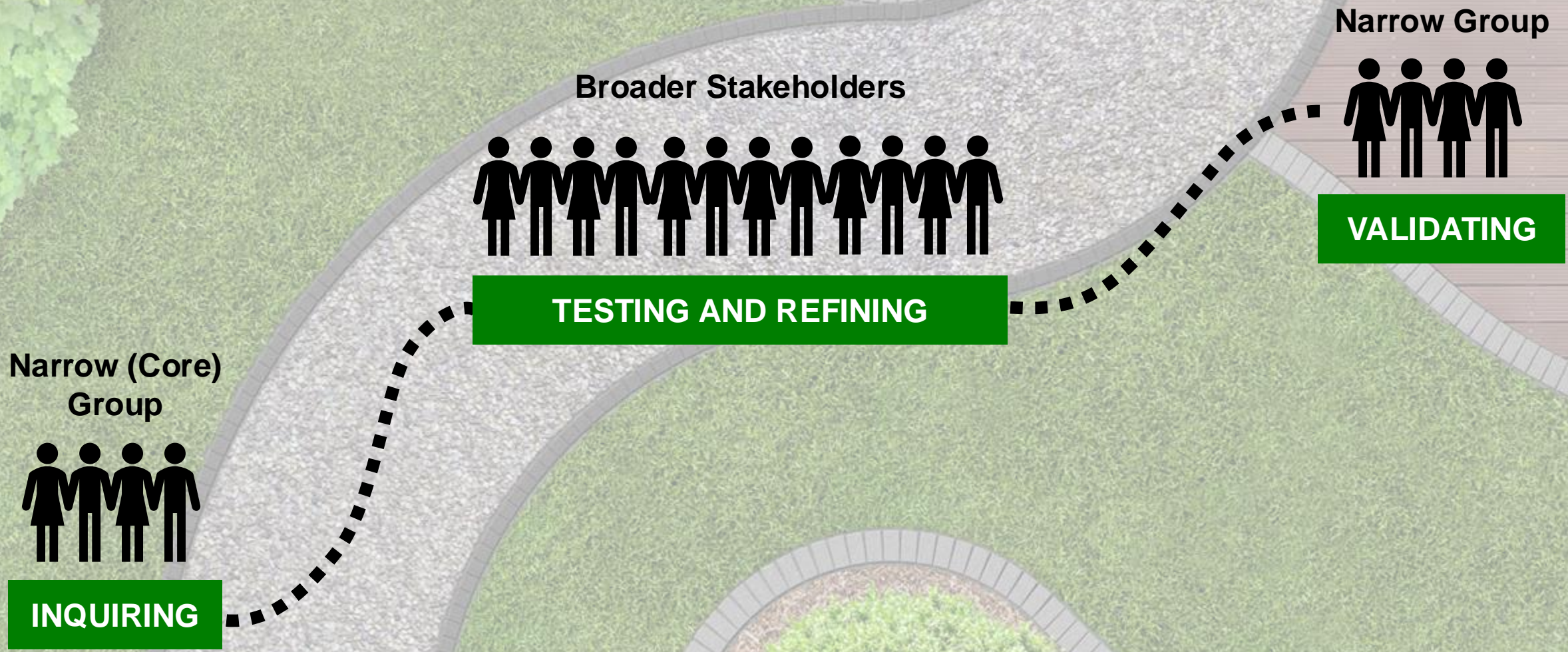
The timeframe: 20 working days

The rapid evaluation approach:

- Interlinked and circular evidence
- Document review identified hypothesis – interviews tested hypothesis, identified new evidence – back to document review – more interviews



# NARROW-BROAD-NARROW ENGAGEMENT



---

# RAPID EVALUATION OF A COVID-19 EMPLOYMENT PROGRAM



The context: Tourism-conservation employee sharing program

The trigger for rapid evaluation: Change in the policy environment due to COVID-19

The timeframe: Six weeks

The rapid evaluation approach:

- **Narrow** engagement with program designers and managers to develop a Theory of Change
- **Broad** data collection through interviews and focus groups with tourism businesses, conservation organisations, employees
- **Narrow** engagement to report findings and validate ToC



# MAINTAINING ROBUSTNESS

---



TRIANGULATION AND CROSS-REFERENCING

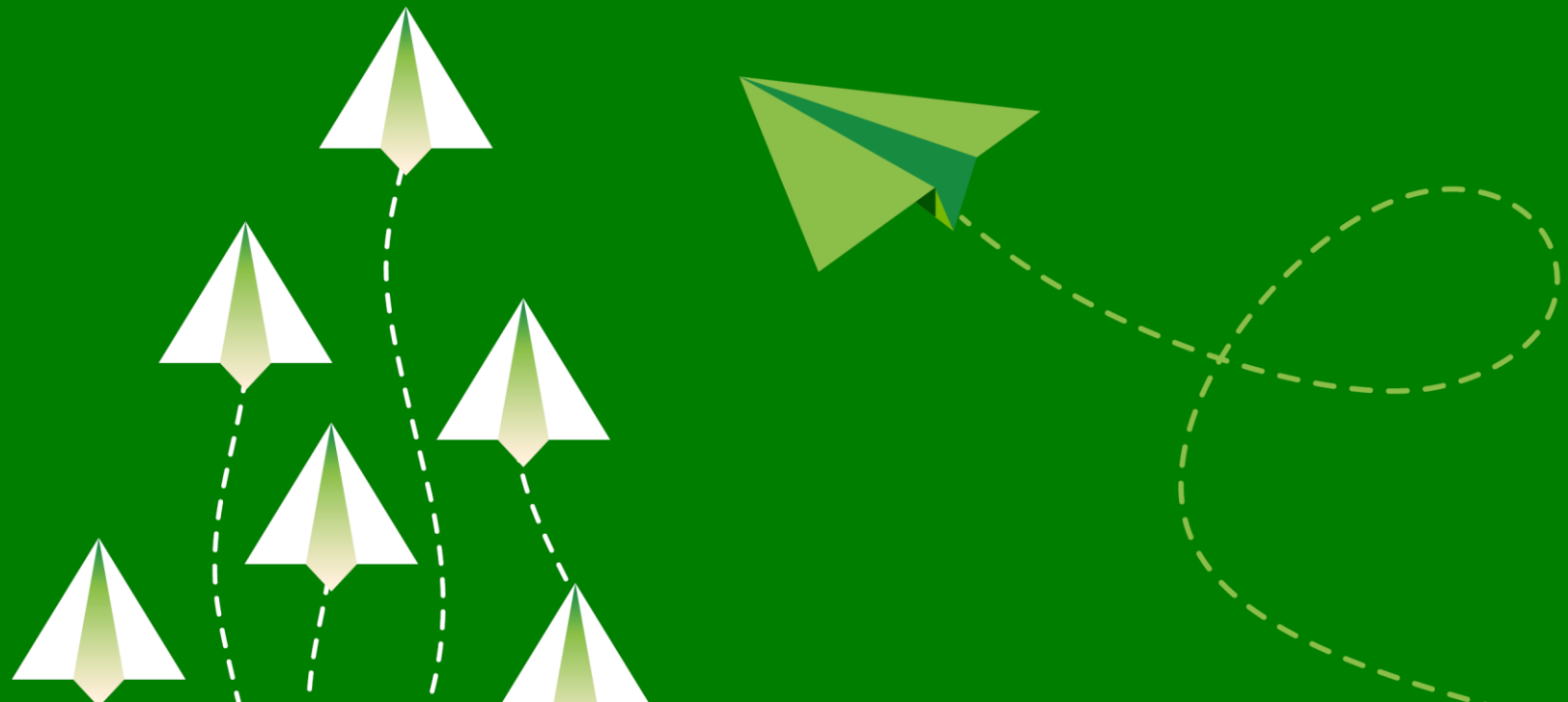


MAKING JUDGEMENTS WITH LIMITED EVIDENCE



TRANSPARENCY REGARDING TRADE OFFS

# TOP TIPS FOR CONDUCTING A RAPID EVALUATION



# RAPID EVALUATION TOP TIPS

- ✓ Ensure you have a clear terms of reference for the evaluation
- ✓ Draw on existing systems, structures and relationships
- ✓ Establish mechanisms to ensure access to the people, data and information you need
- ✓ Ensure regular communication with evaluation commissioner and within evaluation team
- ✓ Consider alternative forms of reporting and dissemination of findings
- ✓ Be transparent about limitations



# BENEFITS OF RAPID EVALUATION





# QUESTIONS AND DISCUSSION





ALLEN + CLARKE

---

Marnie Carter

Senior Consultant

[mcarter@allenandclarke.co.nz](mailto:mcarter@allenandclarke.co.nz)