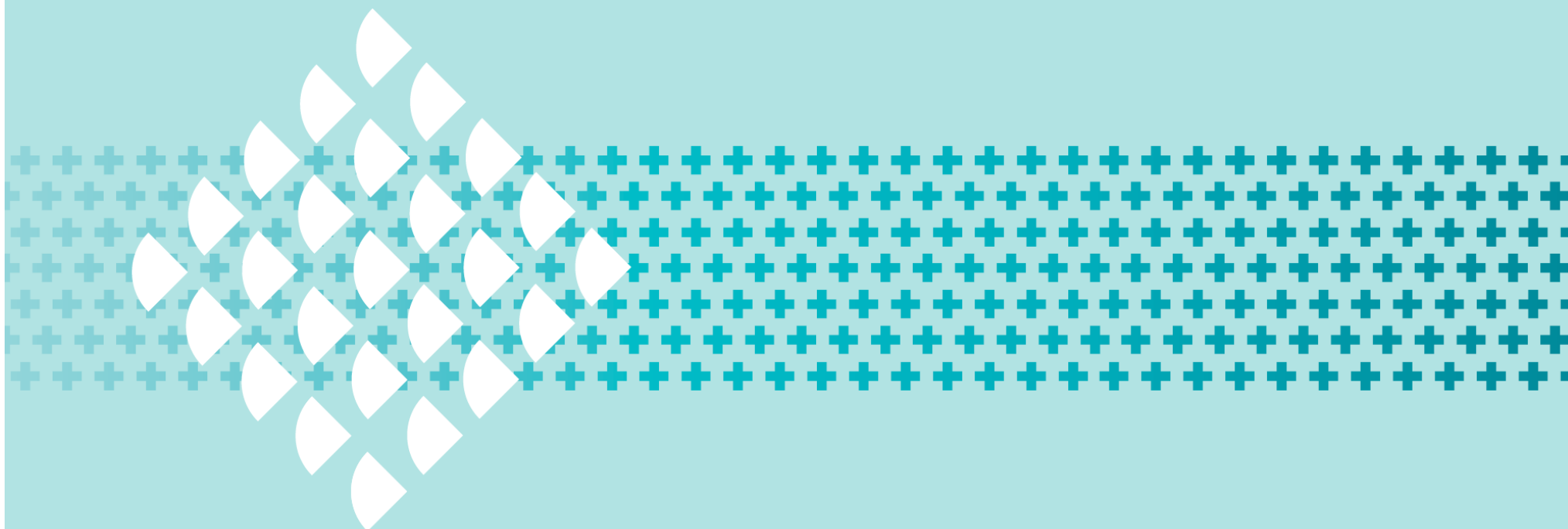


Evaluation Ready

Transforming government processes



Commonwealth grants hubs

Delivering simpler, consistent and streamlined Government grants to the Australian community

Why offer an Evaluation Readiness Service in the Community Grants Hub?

“Issues often raised in ANAO audit reports include...insufficient attention being given to developing **a robust evaluation framework** for the granting activity.”

— ANAO (2013), Implementing Better Practice Grants Administration

“The updated Guide encourages agencies to give **greater emphasis to the evaluation of granting activities**, consistent with the outcomes orientation principle...given the important role this work can play in contributing to granting activities achieving their objectives.”

— Ian McPhee, Auditor-General (2013)

“**Evaluation design** should be considered as part of the design of a grant programme (this should be clearly included in guidance materials and expected in practice).”

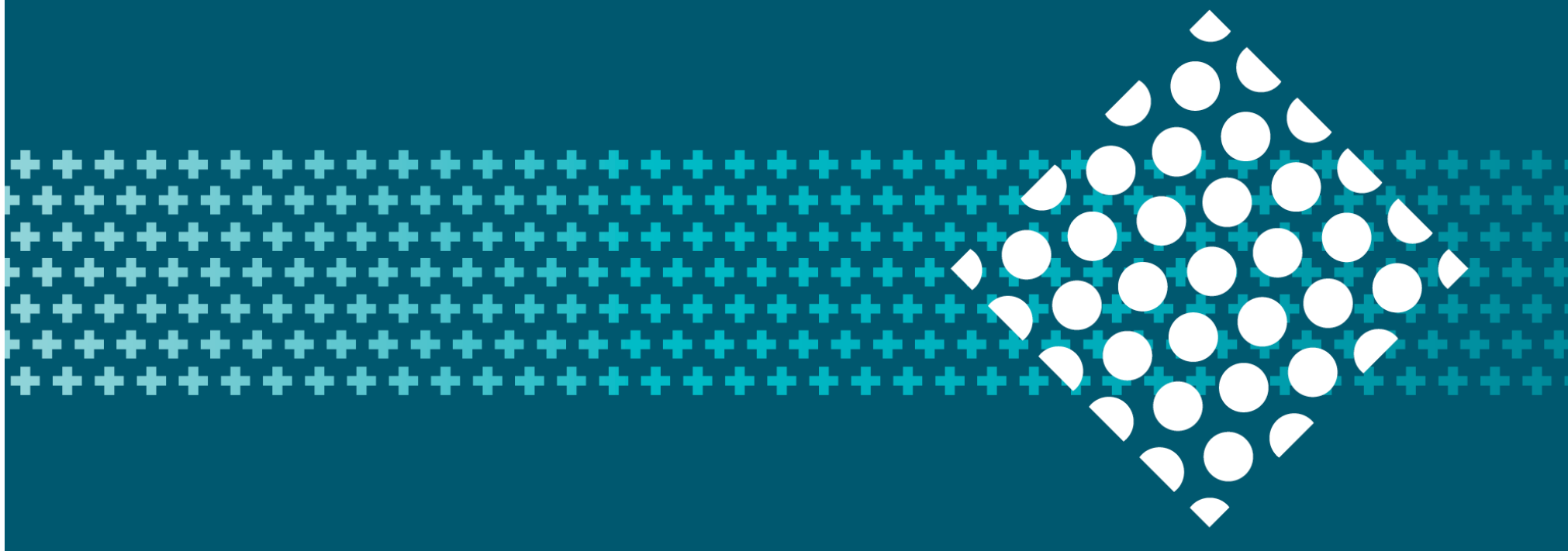
— Joint Committee of Public Accounts and Audit (2017)

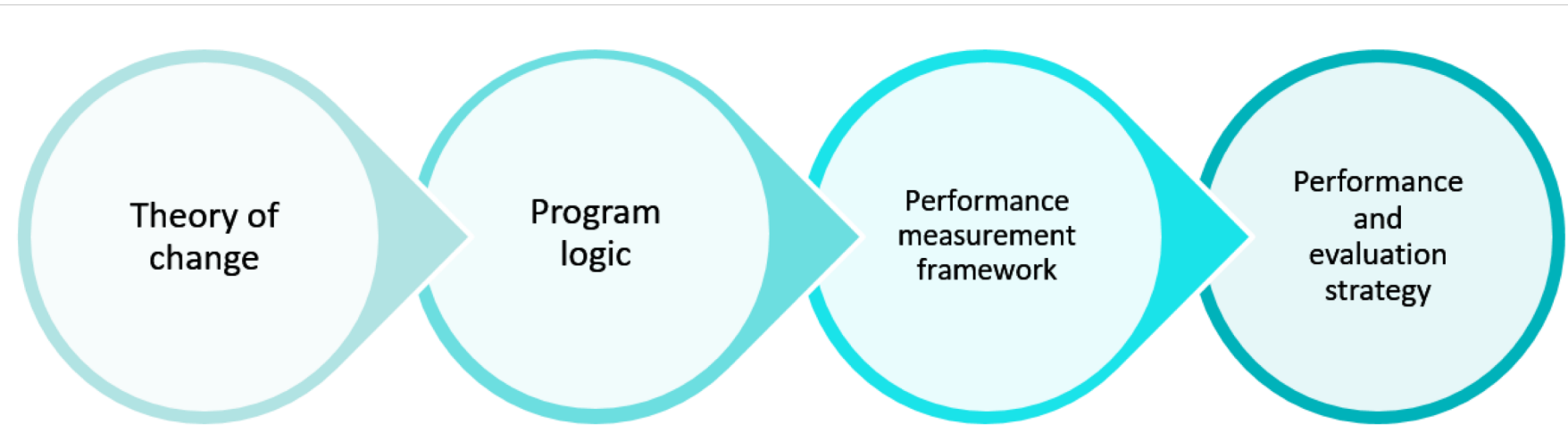
“Key principles for better practice grants administration include...an **outcomes orientation**.”

— Department of Finance (2017) Commonwealth Grants Rules and Guidelines



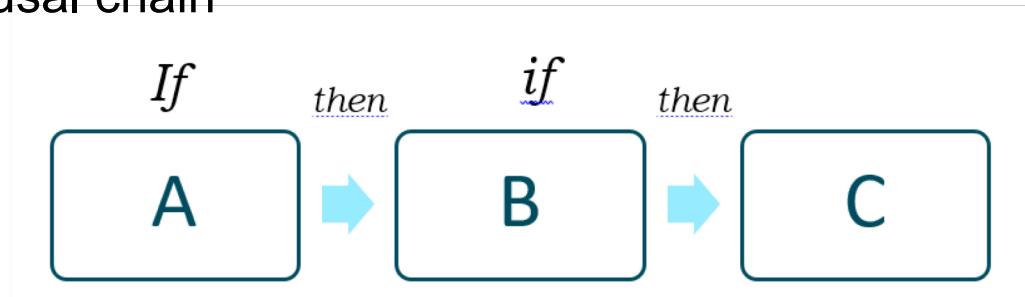
Overview of the service



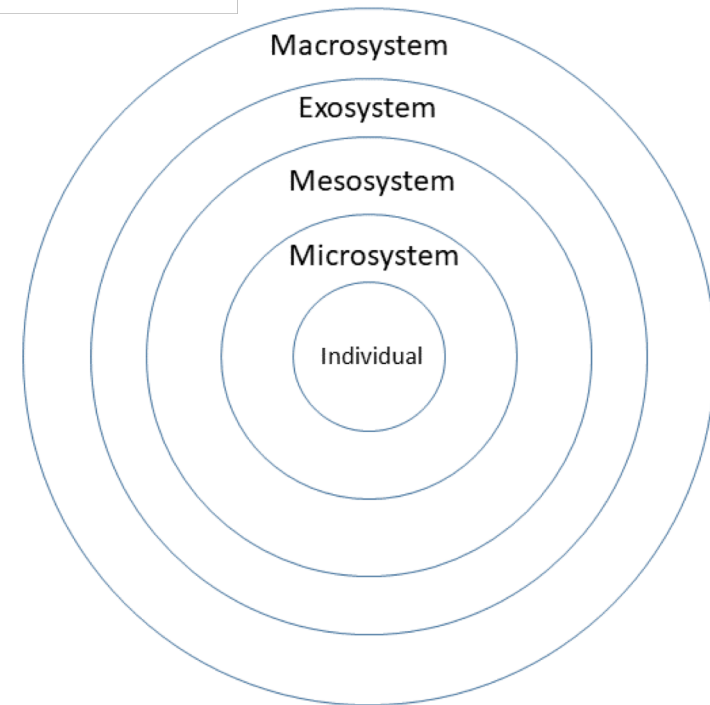


Theory of change

Simple causal chain



More complex theoretical perspectives
(Bronfenbrenner ecological systems theory)



Program logic

Program Logic



Program need

Program objectives

Departmental purpose

Inputs

Participants

Activities

Outputs

Short-term Outcomes

Medium-term Outcomes

Long-term Outcomes

Partners

Assumptions:

External factors:

Performance measurement framework

Outcomes	Performance Indicators	Performance Measures	Success Criteria	Timeframe	Data Source	Data Frequency	Baseline
Short term outcomes							
Medium term outcomes							
Long term outcomes							
Outputs							
Inputs							

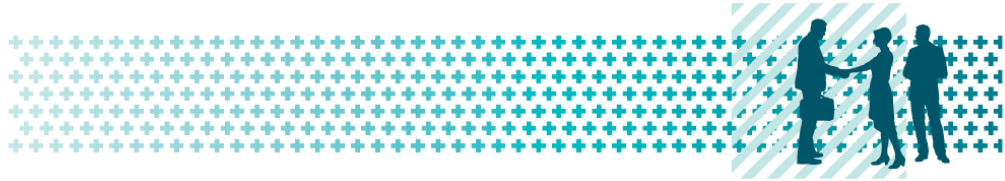
Performance and evaluation strategy

What type of evaluation is required?

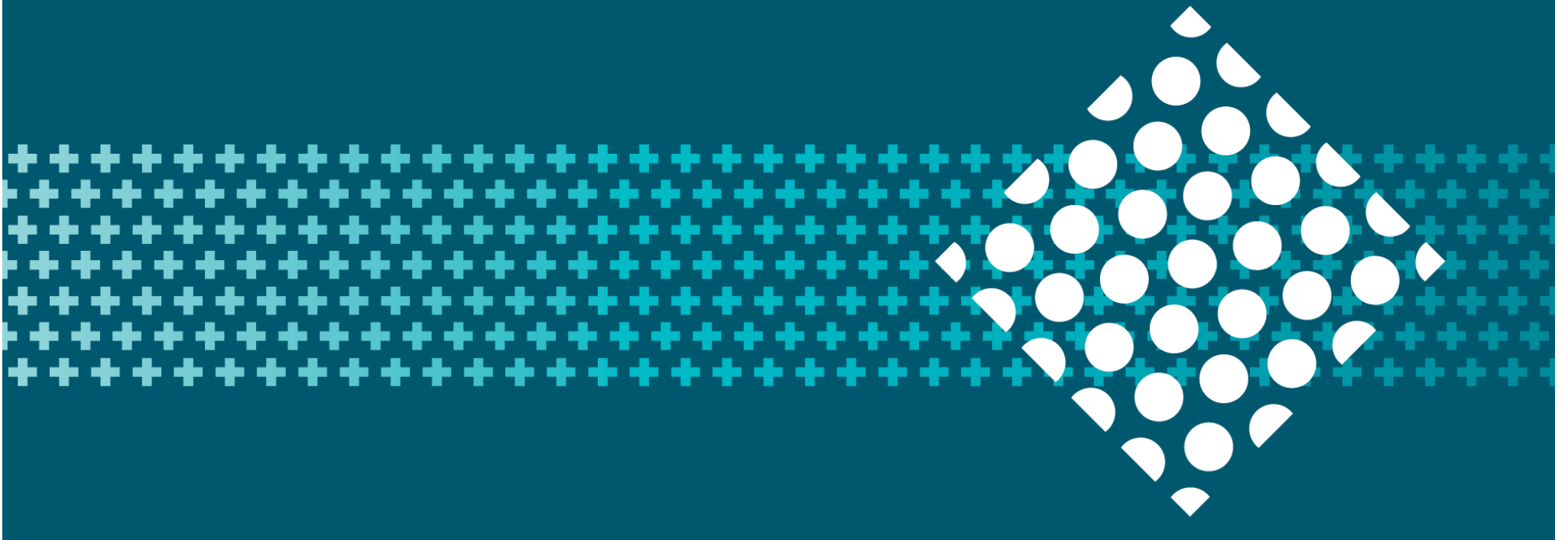
When will the evaluation be conducted?

What are the key evaluation questions?

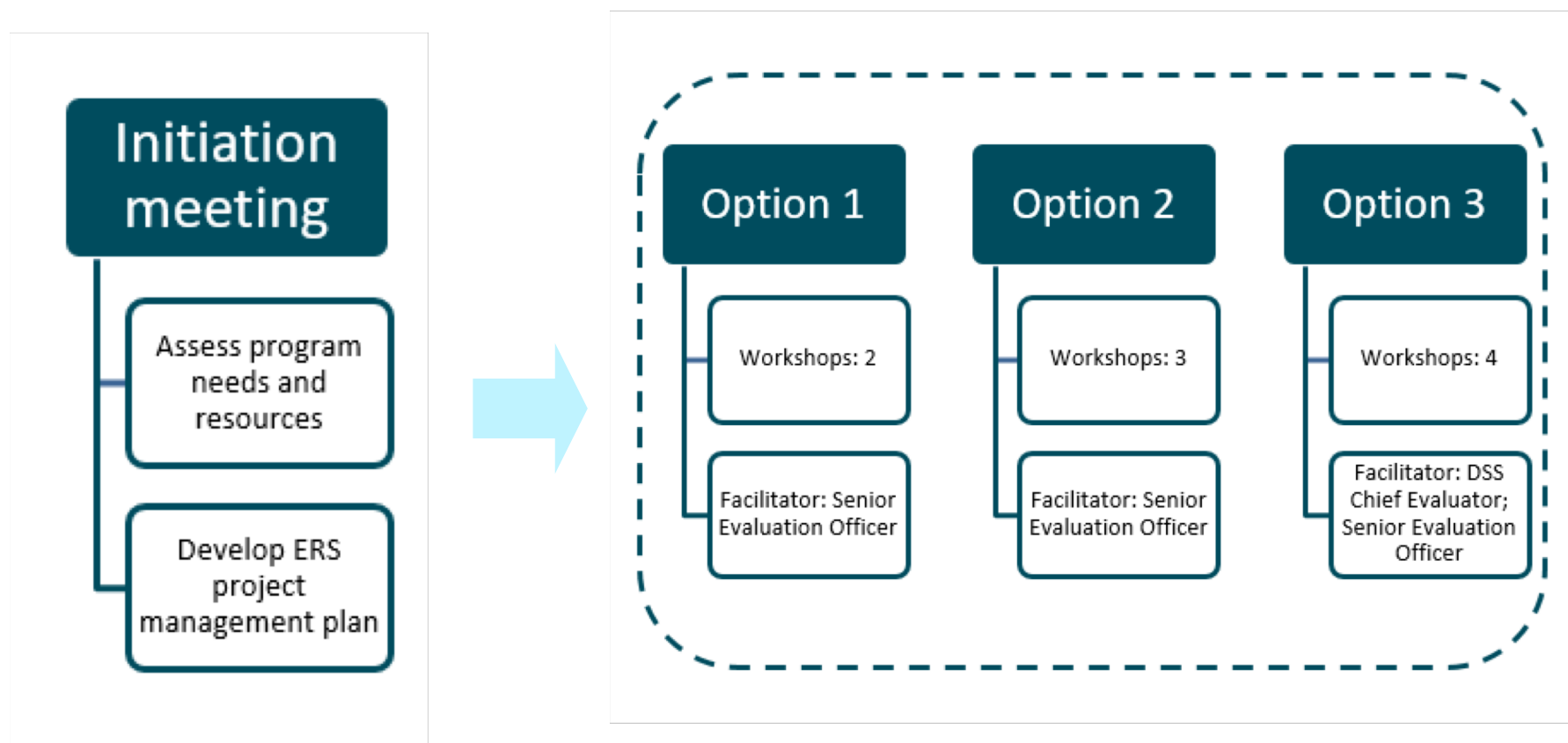
What budget and resources will be required?



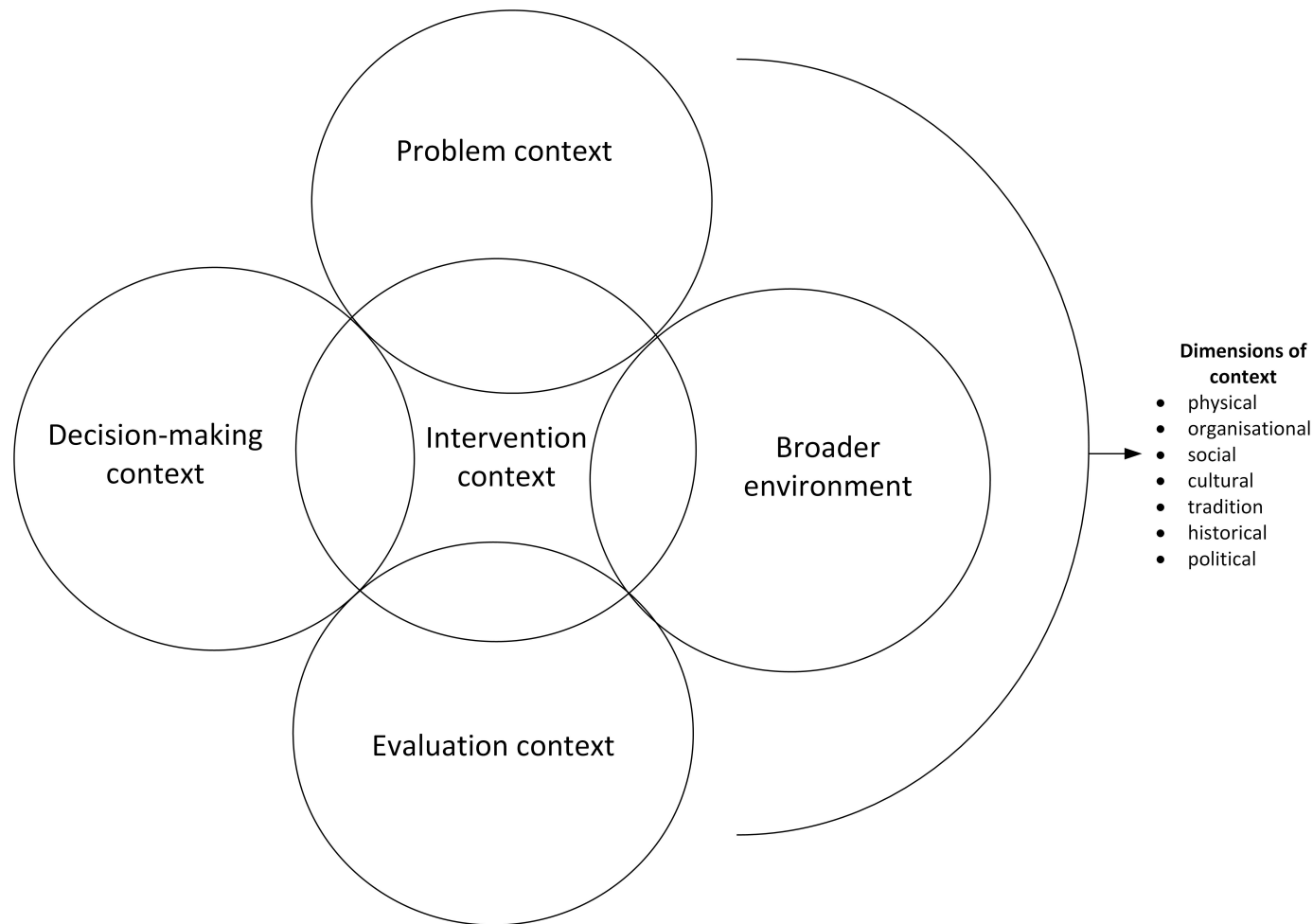
Learnings and challenges



Prototyping, adaptation and customisation

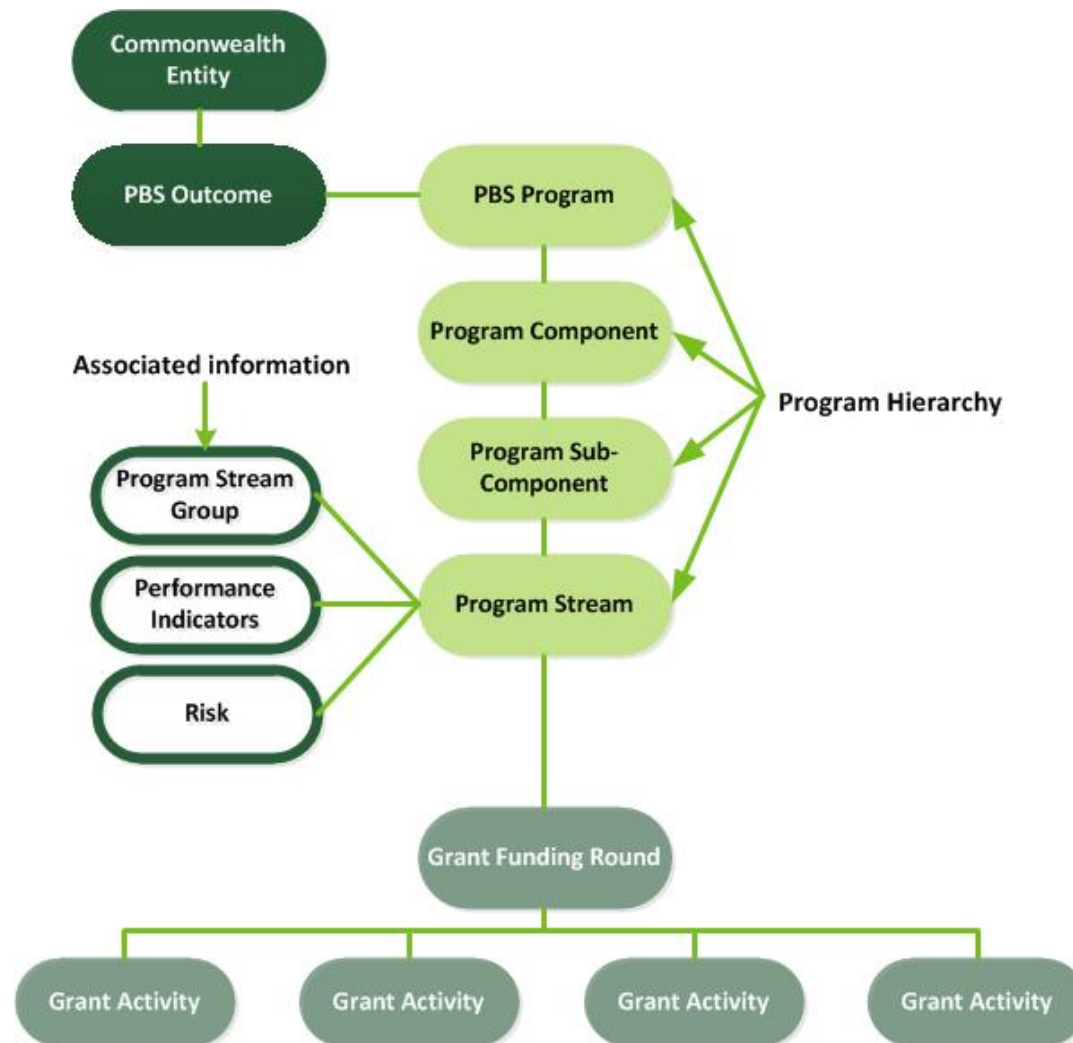


Adapting to the design space



Rog, D.J (2012). When background becomes foreground: Toward context-sensitive evaluation practice. In D.J Rog, J.L Fitzpatrick and R.F Conner (eds) Context: A framework for its influence on evaluation practice. *New Directions for Evaluation*, 135, 25–40.

Situating the service at the correct level



Negotiating the role of the service within the Department

