




# From Outputs to Outcomes: A system transformation approach for the Victorian child and family service sector



- Peak body
- Policy and advocacy
- Research and practice
- Registered training organisation
- Practice networks
- Collaborative projects



A photograph of a woman with long brown hair carrying a young child on her back. They are in a grassy field with trees in the background. The sun is low in the sky, creating a warm, golden glow and lens flare effects. The child is wearing a striped shirt, and the woman is wearing a light blue shirt.

# **The Outcomes Practice and Evidence Network (OPEN)**

**A vehicle for  
strengthening the  
evidence base for  
Victoria's child and  
family services**



Seven cupcakes are arranged in two rows. Each cupcake has a different colored frosting: yellow, grey, light green, and pink. The word 'OPEN' is printed in blue capital letters on each cupcake. Above the letters is a logo consisting of orange dots connected by lines, forming a stylized network or constellation. The cupcakes are set against a plain white background.

**OPEN is a critical friend....**

- **connects the sector to researchers and evaluators**
- **provides resources, guidance and expertise**

**To support evidence informed practice and practice informed research**





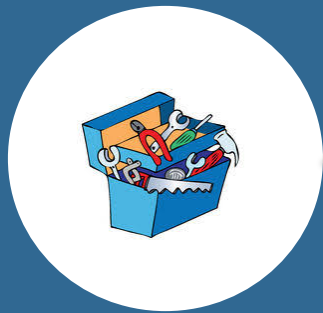
# Why OPEN?

# Why OPEN?



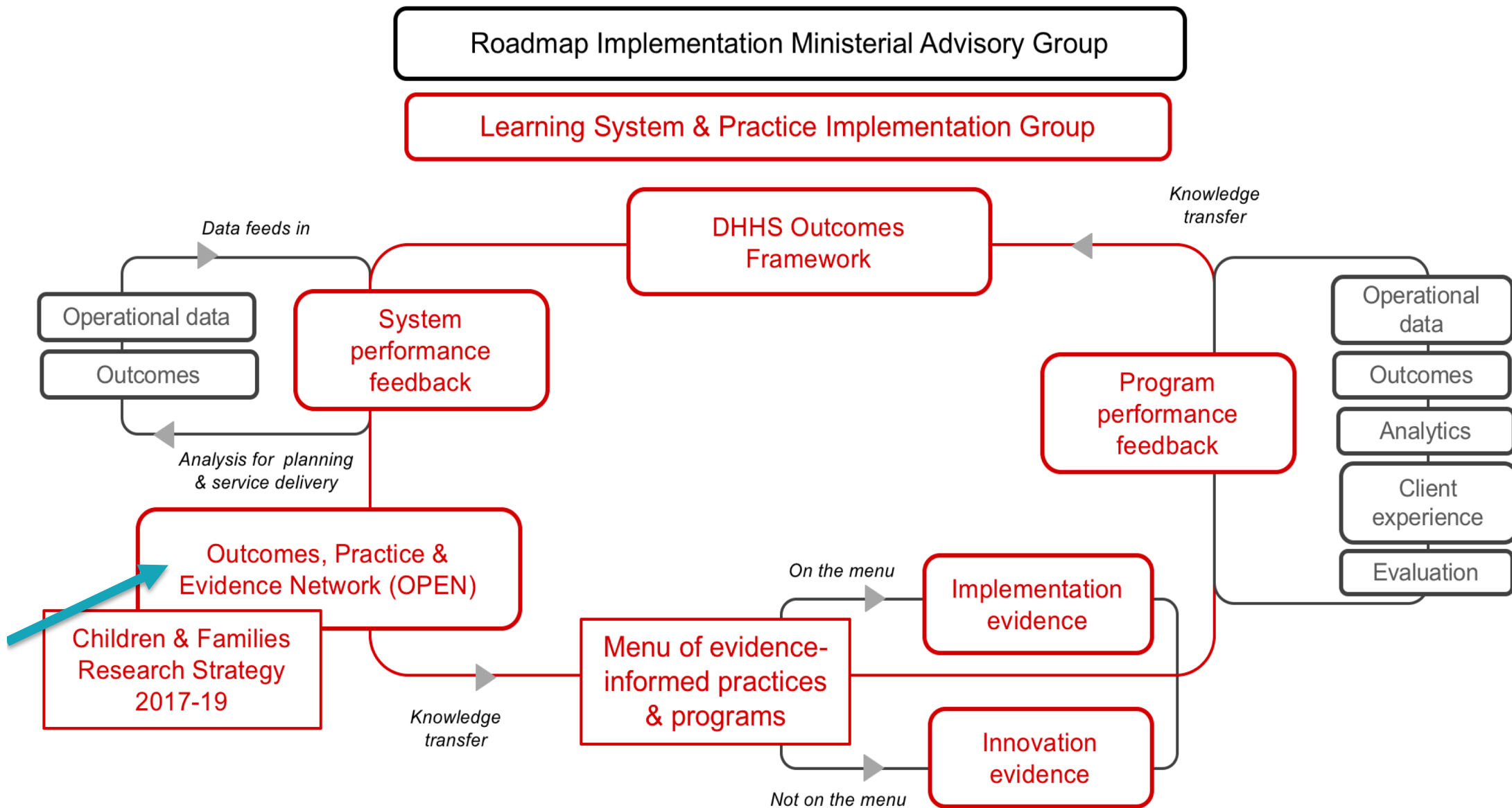
*The Royal Commission into Family Violence recommended:*

- Improving the foundations of the current system
- Building structures to guide long-term improvement
- Strengthened data capture and use
- communication and sharing of evidence



*Learning in organizations means the continuous testing of experience, and the transformation of that experience into knowledge - accessible to the whole organization and relevant to its core purpose. Senge et al., 1994*

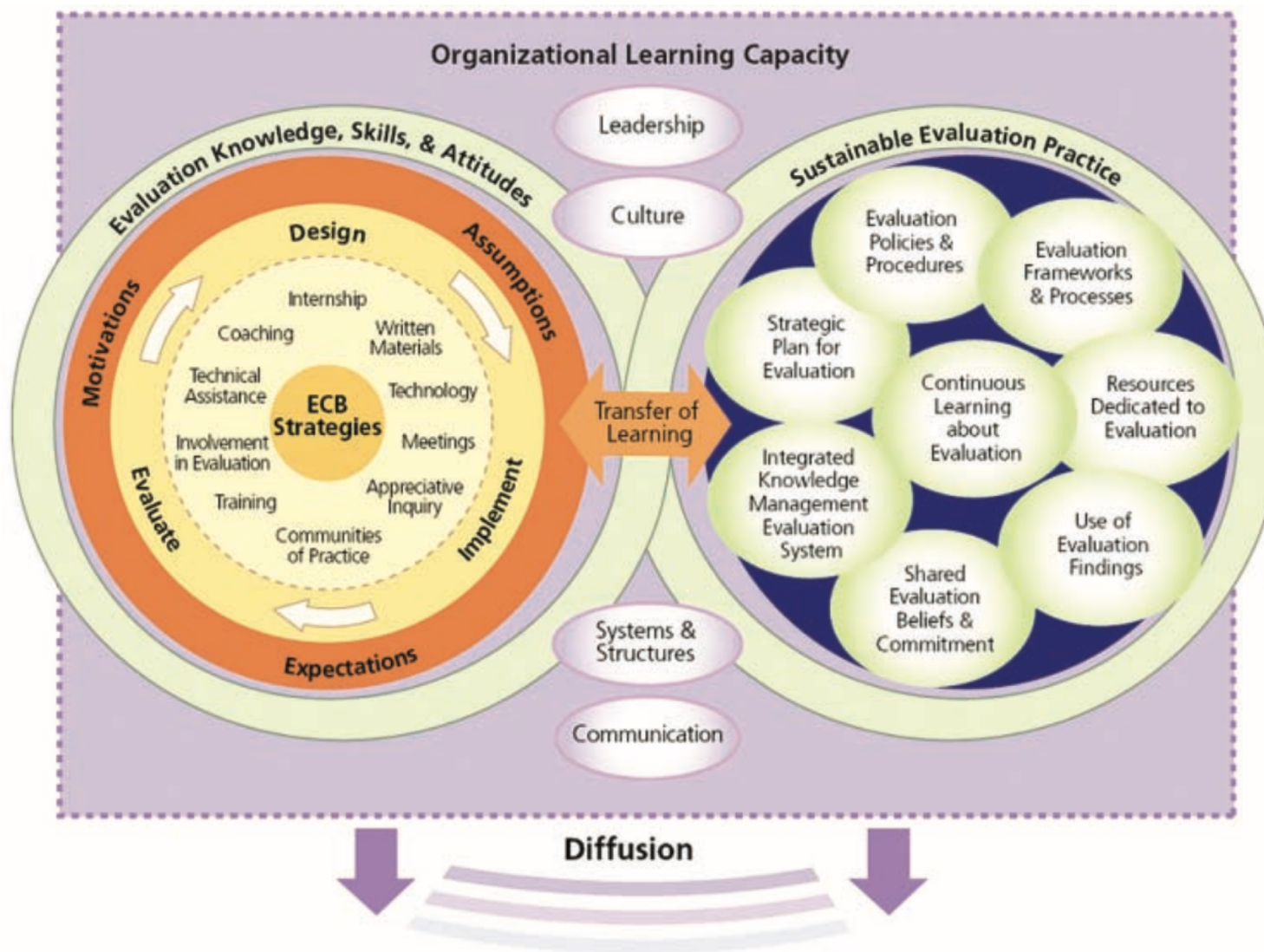




## OPEN is...

- Interconnected but industry-led
- Sponsored by a sector-government-university steering committee
- In a unique position to facilitate integrated efforts to support transformation
- Based on policy and research

## A Multidisciplinary Model of Evaluation Capacity Building (ECB)



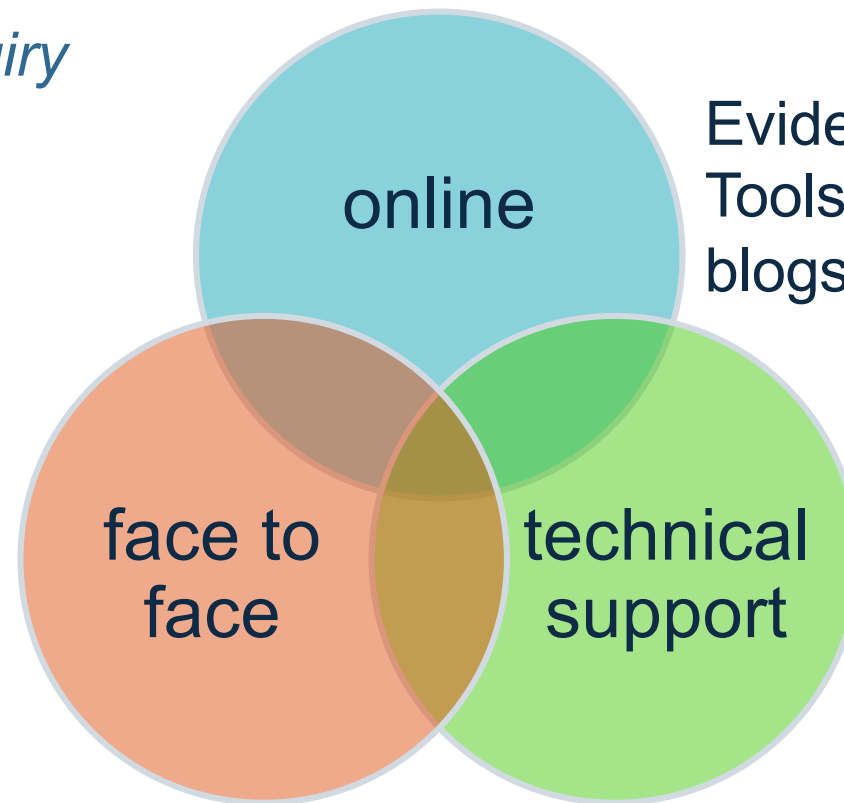
Preskill &  
Boyle,  
2008



# Implementation Model: bottom up and top down efforts

- *Appreciative inquiry*
- *Accessible*
- *Action-oriented*

Forums,  
communities of  
practice, annual  
symposium



Evidence summaries,  
Tools/ resources,  
blogs, case studies

small pro-bono  
consultancy projects  
and advice



# Examples of our approach





## OPEN DATA PROJECTS

*“A community program being able to source free expert support such as this is extremely valuable; it builds capability in evaluation and supports the development of evidence-based practice which ultimately supports families and children in our communities.”*

– Project Worker, Community Service Organisation



# From outputs to outcomes: OPEN Data Projects



- Where did it come from?
- What does the evidence say?
- What is the theory of change?
- How do you know it is making a difference?

Dog training in family services

# From outputs to outcomes: Learning System Grants



# From outputs to outcomes: Learning System Grants



- An implementation evaluation of a Practice Coaching Model in an early years service for children with a disability
- A quasi-experimental evaluation of an evidence informed program for mothers and babies
- An action research project with residential care workers
- Documenting the evidence base for a culturally safe model of an Aboriginal Community Controlled Early Learning Centre





Digital  
Platform

Strategic  
collaborations

Evaluation

# From outputs to outcomes



- ✓ By driving cultural change: A key enabler of the reform agenda; part of the learning system to support systemic change
- ✓ By strengthening practice: supporting the sector to evaluate and build their evidence base from the 'ground up', implementation support and supporting better evidence use to achieve outcomes
- ✓ By being a partner: Industry leading, Government backed and practitioners and universities collaborating to strengthen shared knowledge and practice.

# References

Labin SN, Duffy DJ, Myers DC, Wandersman A, Lesense CA. A research synthesis of the evaluation capacity building literature. *Am J Eval*. 2012;33(3):307–338.

Preskill, H., & Boyle, S. A conceptual model of evaluation capacity building: A multidisciplinary perspective. *American Journal of Evaluation*, 2008;29: 443–459.

Preskill H. Now for the hard stuff: next steps in ECB research and practice. *Am J Eval*. 2014;35(1):345–358.

Senge, P.M., Kleiner, A., Roberts, C., Ross, R.B. & Smith, B.J. (1994) *The Fifth Discipline Fieldbook* Nicholas Brealey Publishing Limited, London, UK



*Centre for Excellence*  
in Child and Family Welfare Inc.

**Thank you**  
**Follow our progress**  
**[www.cfecfw.asn.au/open/](http://www.cfecfw.asn.au/open/)**



**Location**

5/50 Market Street  
Melbourne



**Phone**

9094 3520



**Email**

Emily.mellon@cfecfw.asn.au

The publication will remain the intellectual property of the Centre for Excellence in Child and Family Welfare (the Centre). The Centre will provide the Commission for Children and Young People with a licence to use these materials for the purpose of delivery of training, provided the training is not delivered for a commercial profit. The guide can be used by other organisations to provide training to their boards, executive/management, staff and volunteers. Any other use of the materials will require approval in writing from the Centre for Excellence in Child and Family Welfare.

© Centre for Excellence in Child and Family Welfare 2017

We respectfully acknowledge the traditional land of the Kulin Nation and we acknowledge the Wurundjeri people who are the traditional custodians of this land.

We pay respects to their past, present and future Elders. We recognise that their sovereignty was never ceded and the structural inequality created by invasion continues to this day.

We appreciate and celebrate diversity in all its forms. We believe diversity of all kinds makes our teams, services and organisations stronger and more effective.

