



Transforming the Experience of Seriously Ill Children, Young People and Their Families – Real Life Examples of Evaluation in Action

By Sarah Moeller
Research and Evaluation Manager,
Starlight Children's Foundation

CELEBRATING **30** *years*^{*} OF FUN, JOY & LAUGHTER



Starlight Express Rooms



Starlight Express Room Evaluation

- Two days of observation
- Interviews with children and families
- Opportunities for reflection for Starlight team members
- Interviews with hospital partners
- Desktop review

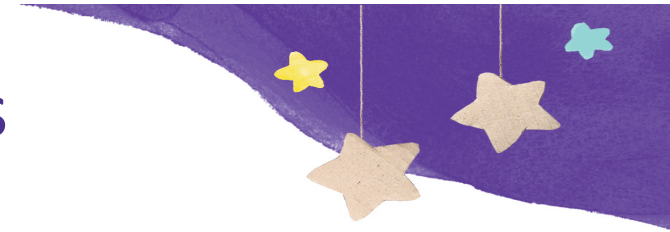


Starlight Express Room Evaluation

- Two days of observation
- Interviews with children and families
- Opportunities for reflection for Starlight team members
- Interviews with hospital partners
- Desktop review



Listen carefully – Making Children's Voices Count



The decision to seek responses from children is based on the belief that children want to and are able to share their experiences, and that we can empower them by valuing their opinions.



Family-Centred Approach



As part of Starlight's commitment to family-centred practice families are consulted to ensure they feel valued, know their opinions are respected and provide an opportunity for them to be 'heard'.



For more information:

Sarah Moeller

Research and Evaluation Manager
Starlight Children's Foundation

Direct: 03 9468 3014

Email: sarah.moeller@starlight.org.au

Dr Claire Treadgold

National Manager, Research and Evaluation

Email: claire.treadgold@starlight.org.au

www.starlight.org.au

