

Developmental evaluation, biostatistics, primary health care researcher and Indigenous voices: Culture clash or symbiotic relationship?

Deborah Askew, Sonya Egert, Sam Togni, Philip Schluter

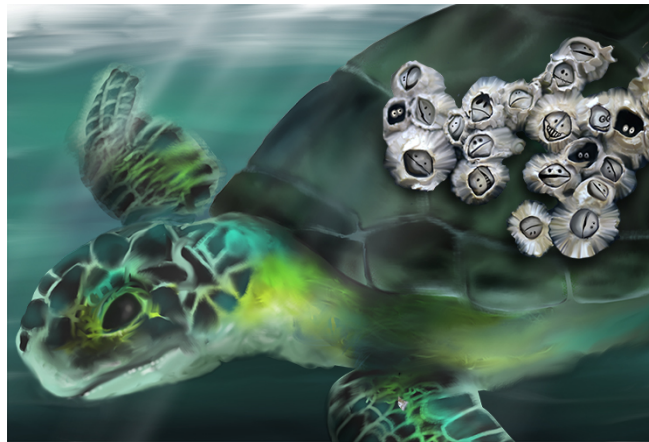


Symbiotic relationships

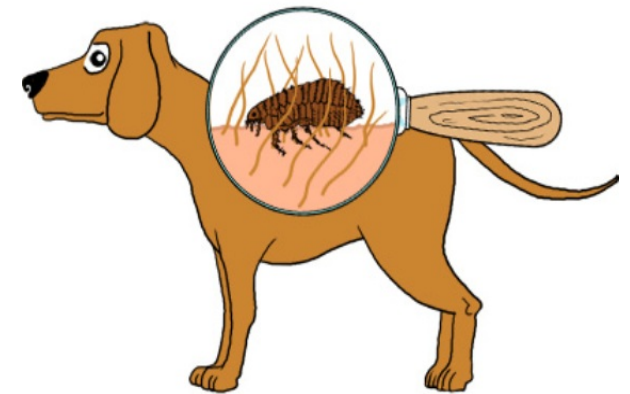
Relationship between two organisms of different species that benefit one or both organisms



Mutualism



Commensalism



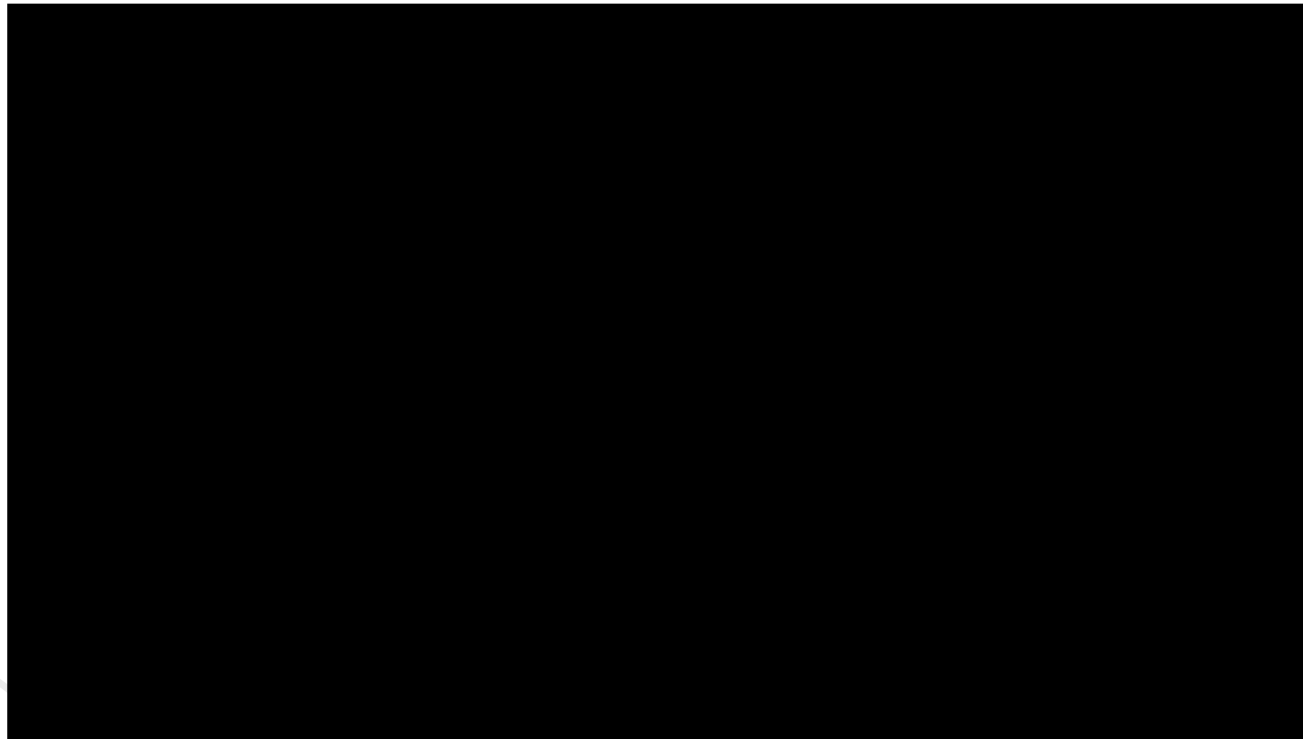
Parasitism

HOMES

- Context: Southern Qld Centre of Excellence in Aboriginal & Torres Strait Islander Primary Health Care, Brisbane
- Outreach case-management model of care
- Recruited 41 Aboriginal and Torres Strait Islander people with complex chronic disease
- Improved self-rated health status and decreased rates of depression
- Model of care now permanent feature of how the health service cares for patients with complex chronic disease



Sonya



Queensland Government

Metro South Health

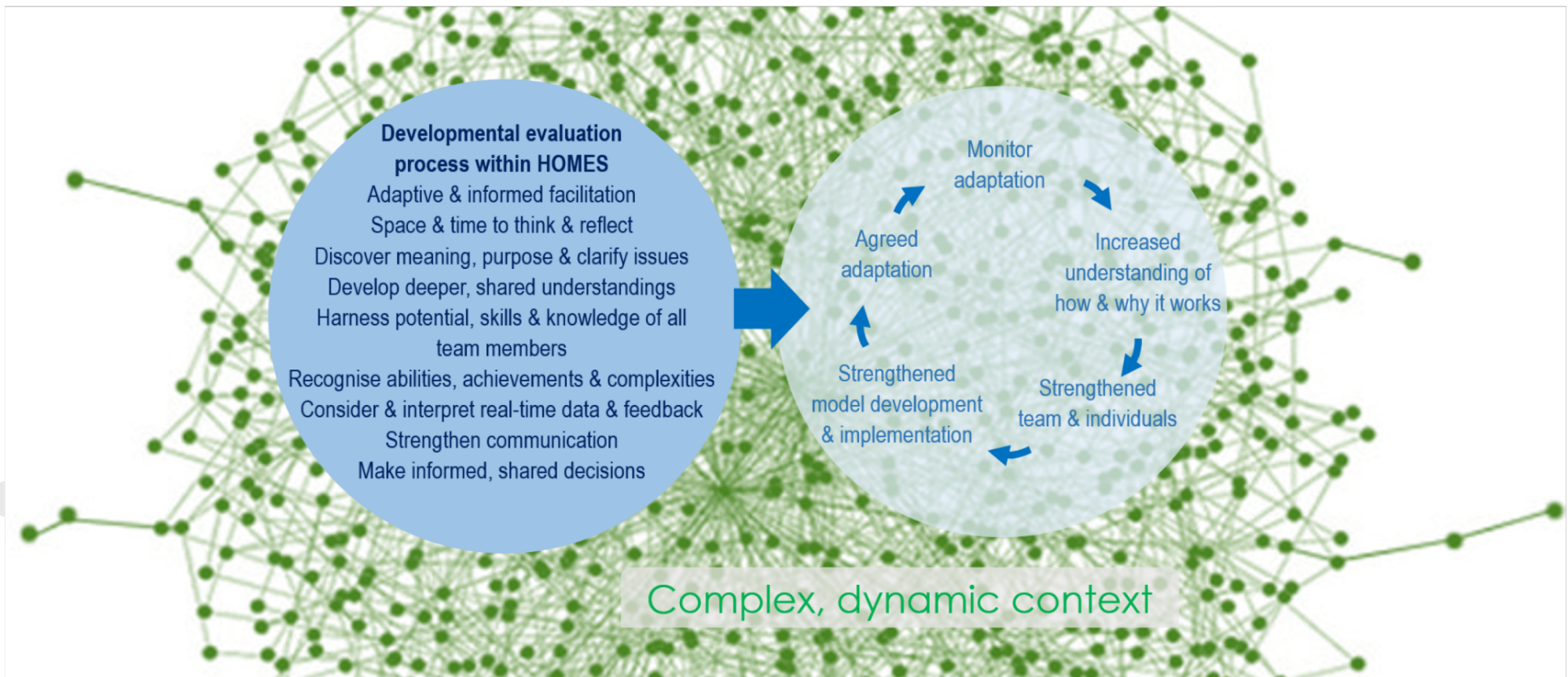


THE UNIVERSITY
OF QUEENSLAND
AUSTRALIA

Create change



Developmental evaluation in practice



Queensland Government

Metro South Health



THE UNIVERSITY
OF QUEENSLAND
AUSTRALIA

Create change

Acknowledgements

HOME Study participants

Noel Hayman, Southern Qld Centre of Excellence

Alan Cass, Menzies School of Health Research

Alex Brown, South Australian Health & Medical Research Institute

Danila Dilba Health Service, Darwin

Previous case managers: Roslyn Wharton-Boland, Sam Ley, Aman Bajania

Critical Friend: Vern Hopkins

Current case managers: Liz Darlington, Nichola Potter, Audrey Burgin