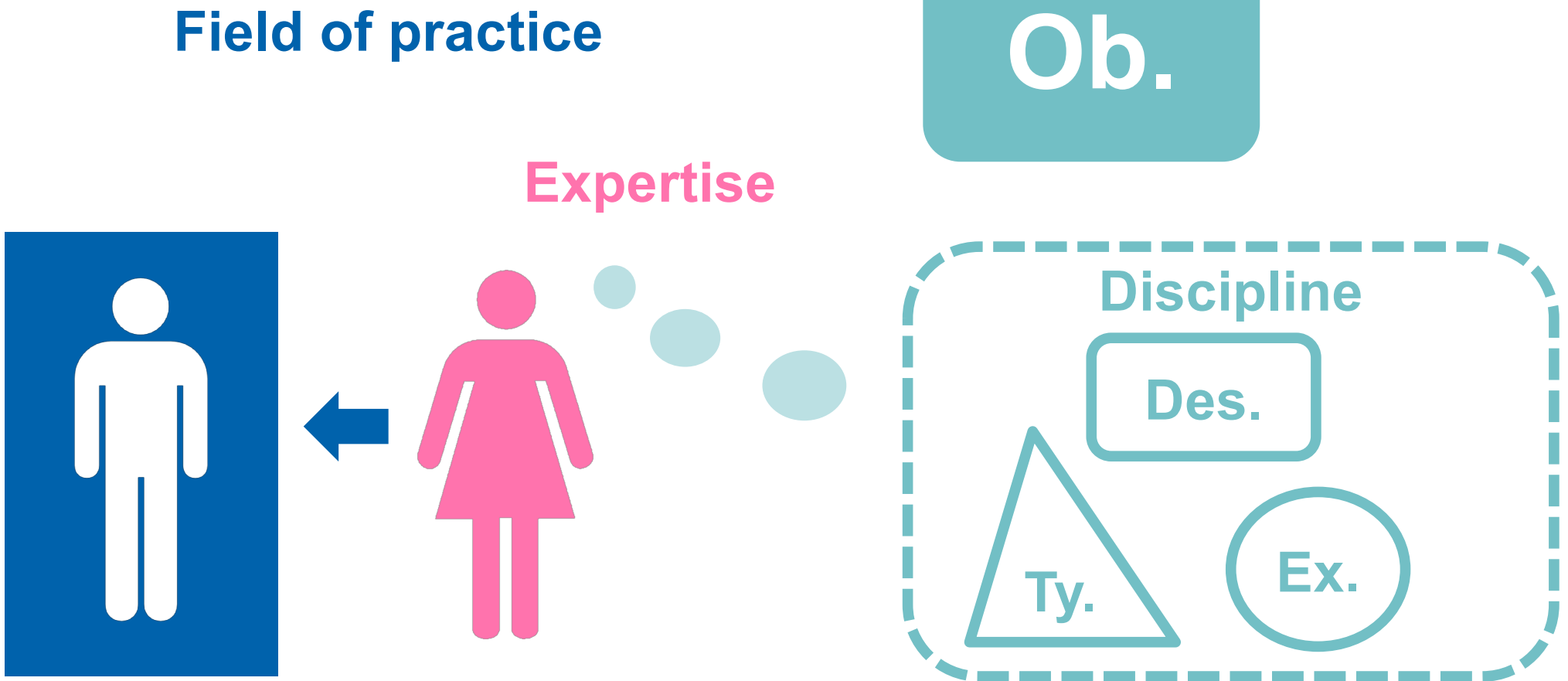


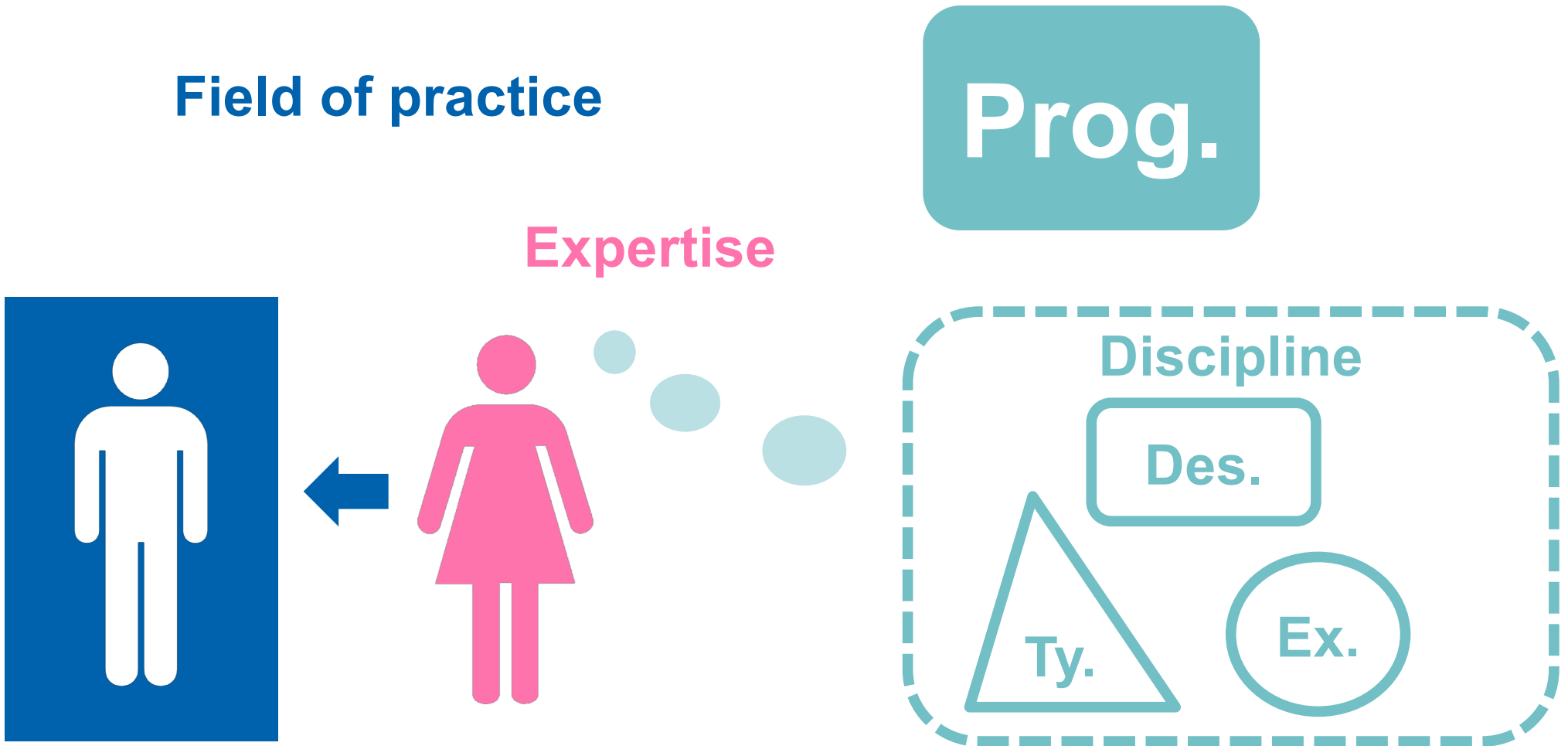


Theories *on* and *of*: a systematic analysis of evaluation's domains of knowledge

Dr. Ghislain Arbour
Centre for Program Evaluation

September 2018, Australasian Evaluation Society
International Evaluation Conference, Launceston Australia





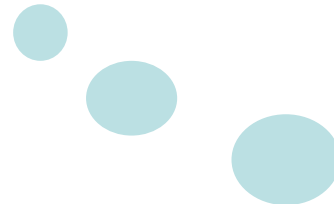
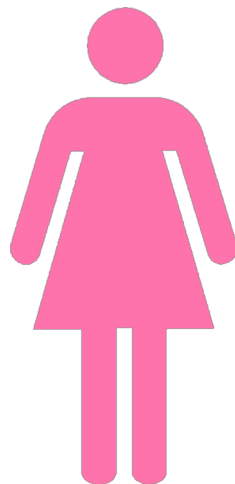


Field of practice

Prog.

Val.

Expertise



Program evaluation

Des.

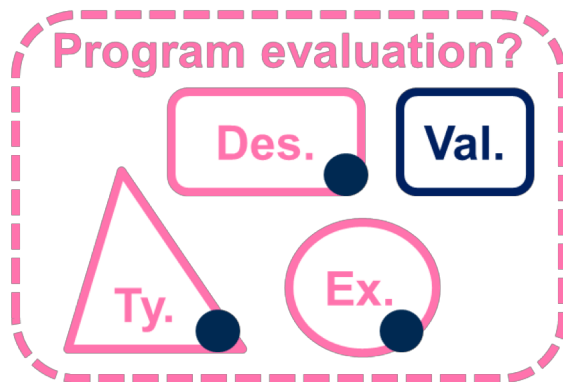
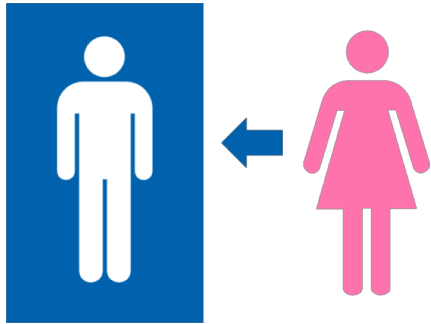
Val.

Ty.

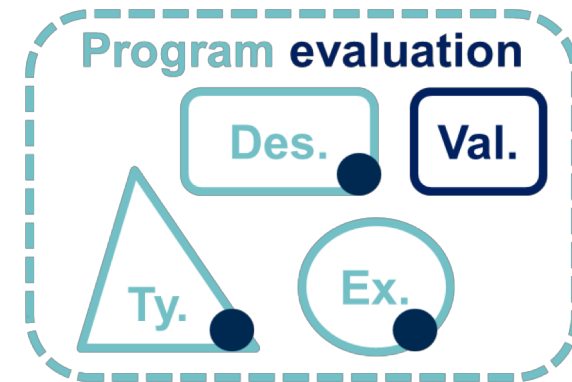
Ex.



Theories *on* evaluation

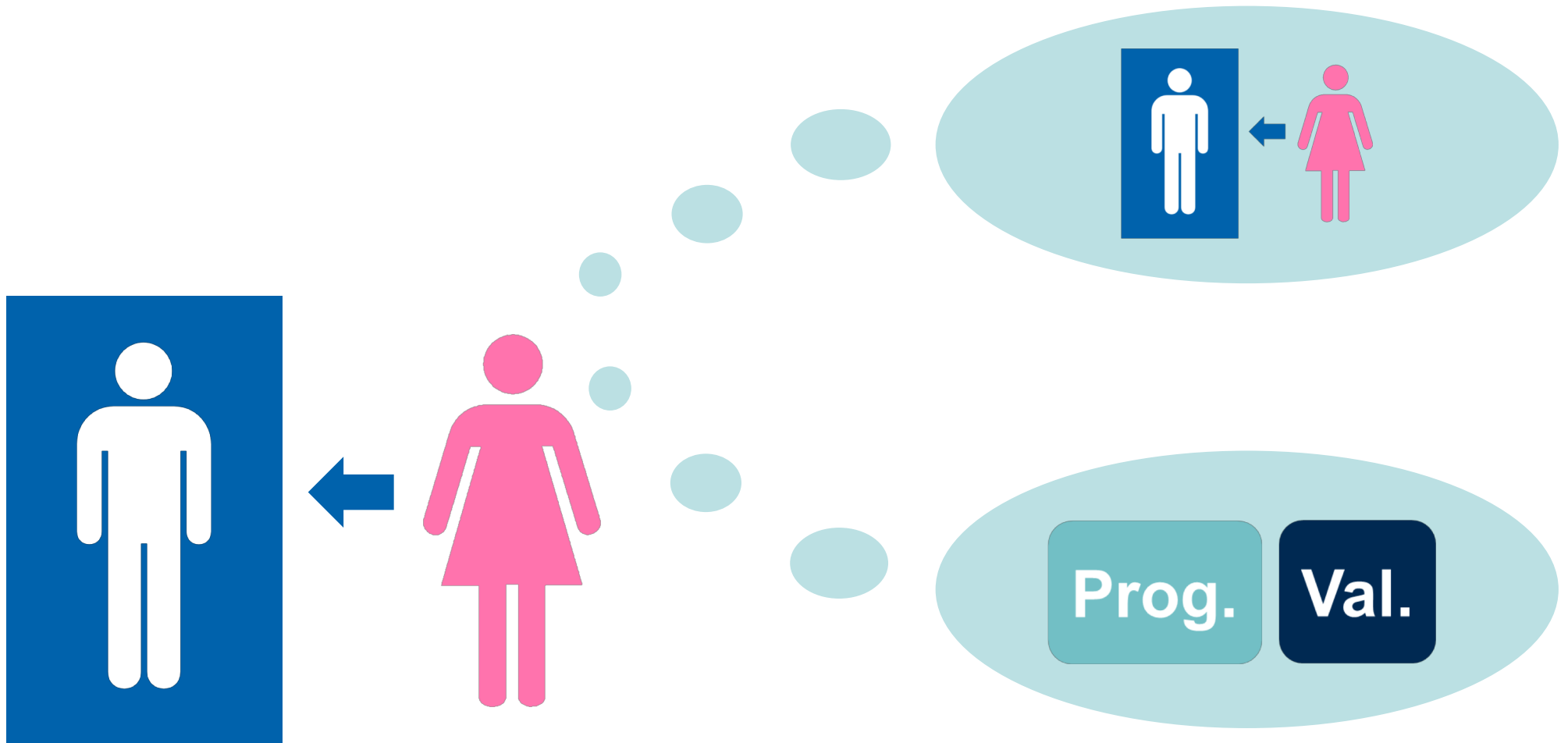


Theories *of* evaluation





Limitations? Self-blinding?





THE UNIVERSITY OF
MELBOURNE

ghislain.arbour@unimelb.edu.au