

Evaluating influence

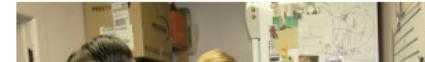
Joanna Farmer

*Workplace Strategy Lead,
beyondblue*

Find training and resources for
better workplace mental health

Learn more >

Workplace resources for



Challenge

Hi, I donated \$20 last year.
Can you tell me exactly how many
Children I've saved?



freshspectrum.com

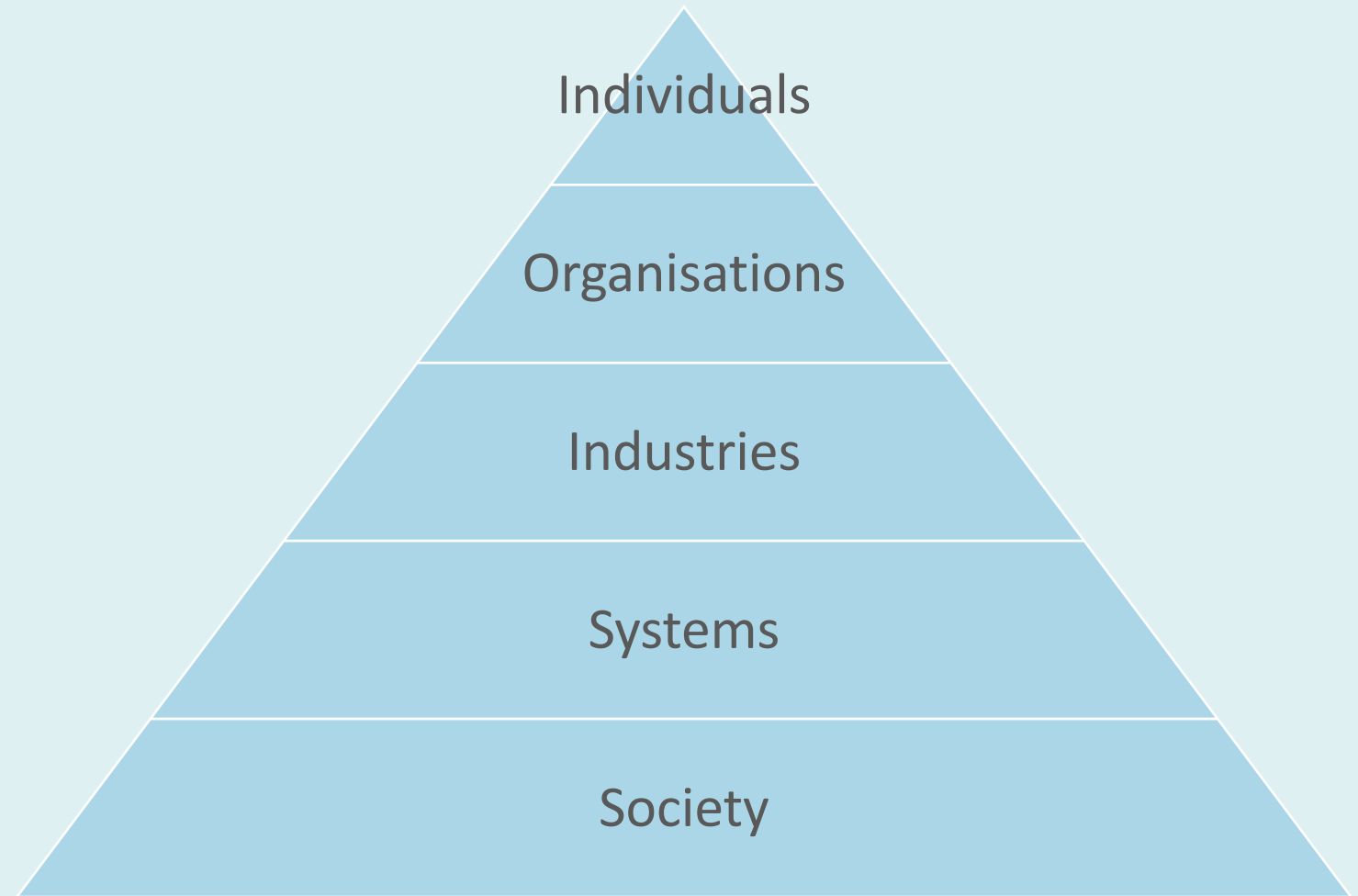
Program evaluation

Results Chain (also known as a pipeline model)

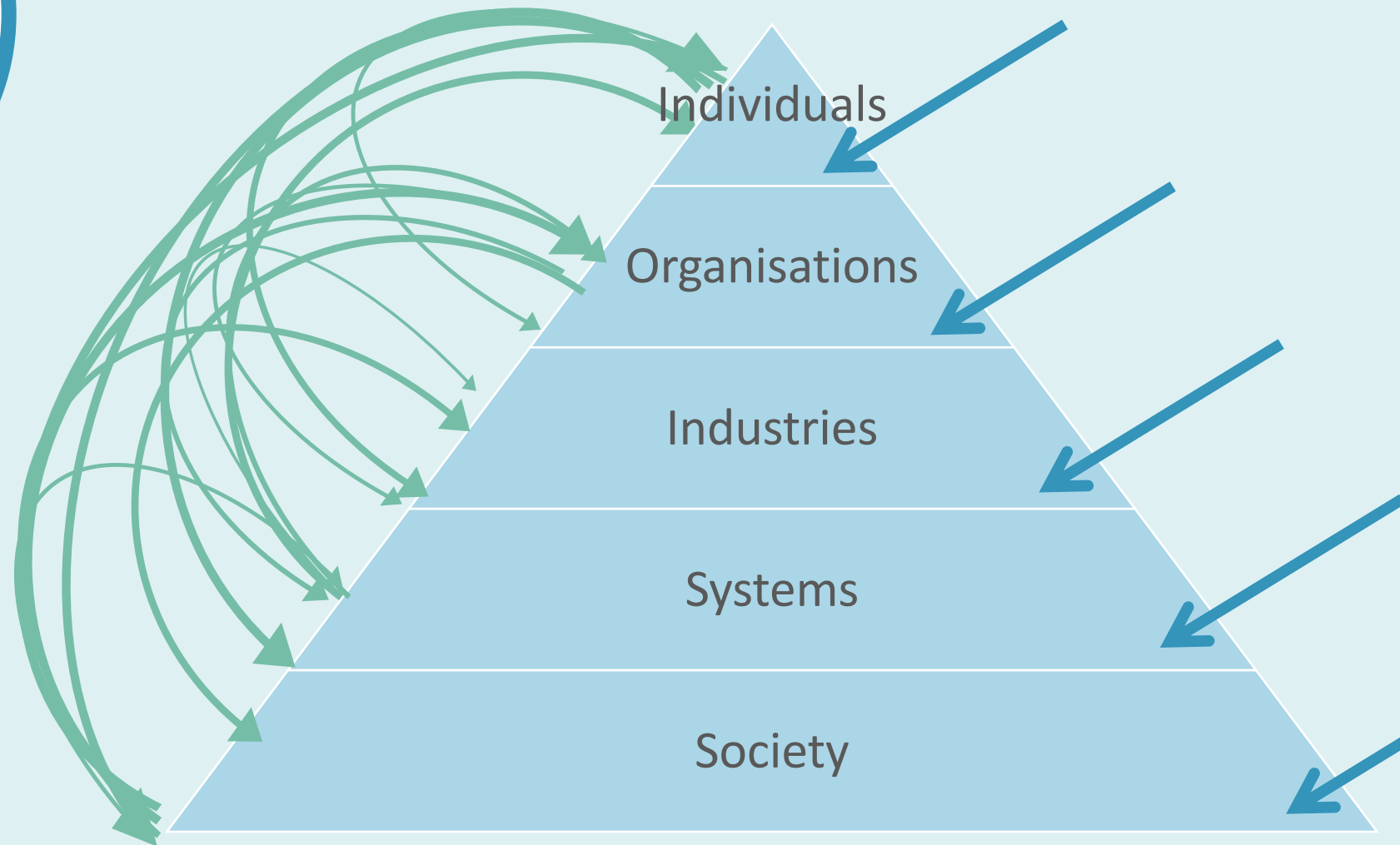
showing a program as a series of boxes - inputs-> activities -> outputs -> outcomes -> impacts.



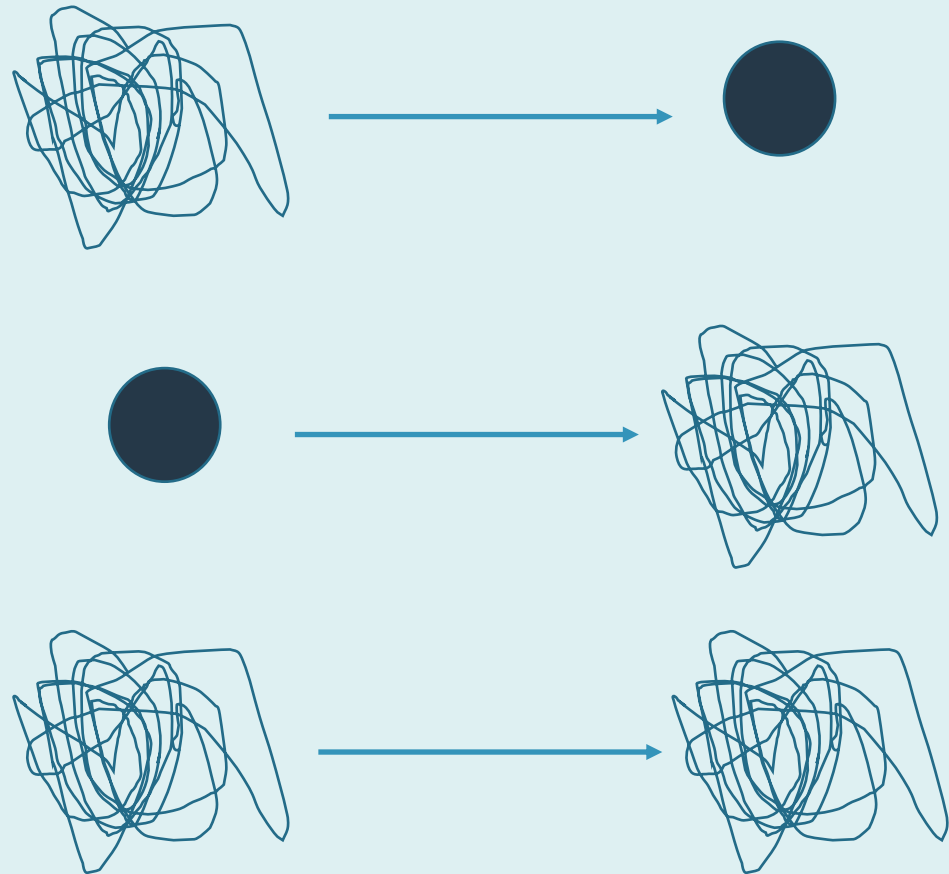
System
complexity



System
complexity



System complexity



The image features a complex 3D maze made of white rectangular blocks, creating a series of interconnected paths and dead ends. The perspective is from an elevated angle, showing the depth of the maze's walls. In the top right corner, there is a blue circular graphic with a white border. Inside this circle, the words "The challenge" are written in a white, sans-serif font, with "The" on the first line and "challenge" on the second line.

The
challenge

Fluid situations



Time



Institutions
get in the
way



Solutions?



Contribution



Ditch the PL?



Ditch the PL?



Goal free?



Other models

Michie, Atkins and West
www.behaviourchangewheel.com



Data



Stakeholders



Thank
you



www.linkedin.com/in/joanna-farmer



www.joannafarmerblog.wordpress.com



[@joannataksmentalhealth](https://www.instagram.com/joannataksmentalhealth)



[@joannafarmer](https://twitter.com/joannafarmer)