



# Creating credible findings in evaluating a complex programme

The New Zealand Prime Minister's Youth Mental Health Project

Carolyn O'Fallon



# Today

---

- ④ Setting the scene: approach to solving complex social issues in New Zealand
- ④ The strategic evaluation of the Prime Minister's Youth Mental Health Project

# Some New Zealand problems are complex...

---

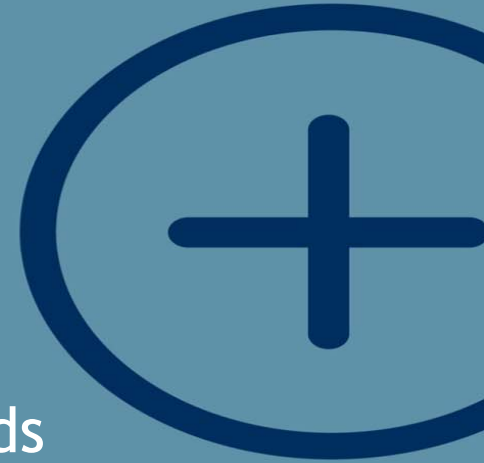
- ③ High rates of child abuse and neglect, rheumatic fever, (relative) child poverty, youth suicide, poor quality housing
- ③ Where Māori and Pacific peoples tend to be more highly represented in such statistics
- ③ Where clearly identifiable “places” (e.g. Northland, Gisborne, South Auckland) have greater “at risk” populations



# The Government's response: Social investment

---

- Uses data and evidence to understand the needs of people
- Focuses on evidence-based prevention and early intervention
- Collaborative, multi-agency response over several years
- Emphasises monitoring & evaluating, learning and making improvements

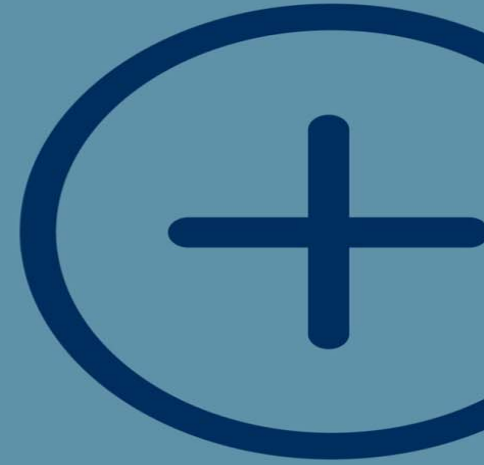


superu



# The Prime Minister's Youth Mental Health Project

---



- System boost comprised of 26 initiatives
- Some new, some expanded, some pilots of international interventions, some reviews
- In places where youth live, work, study and play
- Nationally developed, locally implemented
- 4 year programme



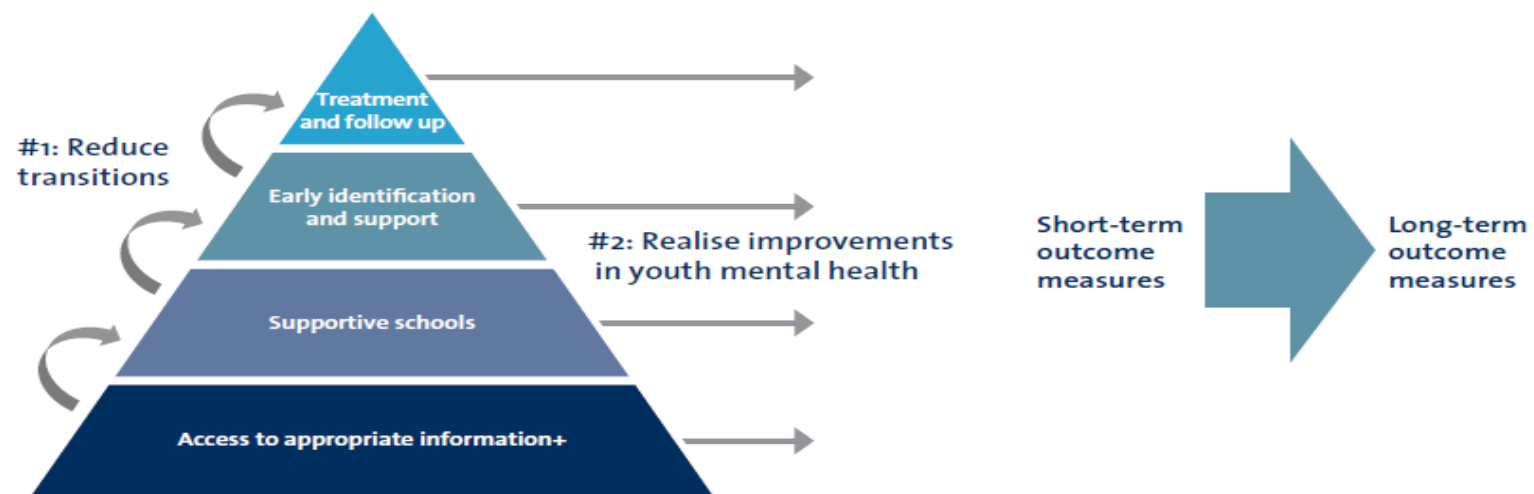
superu



# The structure of YMHP

Schematic of logic for YMHP

YMHP is intended to have two main changes...



Structure of YMHP

# YMHP outcomes

---

- ⋙ Improved knowledge of what works to improve youth mental health
- ⋙ Increased resilience among youth
- ⋙ Better access to timely and appropriate treatment and follow-up
- ⋙ More supportive schools, communities and health services
- ⋙ Early identification of mild to moderate mental health issues in youth
- ⋙ Better access to appropriate information for youth and their families and whānau.



## 26 initiatives

### Improved knowledge of what works to strengthen systems and processes:

- In referral pathways and transitions: Youth referrals pathways review (#19);
- In the ways services are funded: Developing integrated funding models and connected service delivery (#24)
- In schools: ERO review of wellbeing in schools (#11); Improving the school guidance system (#12); Co-locating additional social services in schools (#25)
- In education: Review of AOD education programmes (#13)

### Youth engagement (initiative 20)

### Better access to timely treatment and follow-up:

- Youth Primary Mental Health service (#3)
- E-therapy (#4)
- CAMHS & AOD Follow-Up (#6)
- CAMHS & AOD Access (#7)
- Addressing the emerging youth mental health issues in Canterbury (#26)

### Early identification and support:

- School-Based Health Services (#1)
- Workforce development - HEEADSSS Wellness Check (#2)
- Youth Primary Mental Health Service (#3)
- Primary care responsiveness to youth (#5)
- Social support for Youth One Stop Shops (#18)
- Youth mental health training for social services (#21)
- Whānau Ora for youth mental health (#22)

### More supportive schools:

- PB4L School-Wide (#8)
- PB4L Check and Connect (#9)
- PB4L My FRIENDS Youth (#10)
- Youth Workers in Low Decile Secondary Schools (#14)
- Addressing the emerging youth mental health issues in Canterbury (#26)

### Better access to appropriate information:

- Social Media Innovation Fund (#15)
- Improving the youth friendliness of mental health resources (#16)
- Information for parents, families and friends (#17)
- Referral pathway supports for young people (#23)

superu



# Strategic evaluation

---



### Summative Evaluation Report

Synthesises Phase 2 YMHP evaluation findings and considers future investment in youth mental health

### National perspective

Key informant interviews (initiative leads and Steering Group)

National outcome indicators (secondary data)

Initiative monitoring data (as reported by initiatives)

*Overview of what was intended, what was delivered, the value of the programme approach, identified gaps and challenges, what lessons were learnt about further developing the system of support for youth with mental health, what difference did it make?*

### Locality perspective

Schools: Principal and school lead interviews, school staff survey

Health & social services providers: interviews

Youth: OurSCHOOL survey and interviews

Family & whānau: interviews

Community: NGO and community leader interviews

Desk-based research

Local indicators (sub-set of national)

*How YMHP operates on the ground, is it addressing local needs, how are decisions made – what is valued, what is missing, what difference is it perceived to have made?*

### Initiative perspective

Summary of initiative evaluation findings

Case study lens on the delivery of initiatives

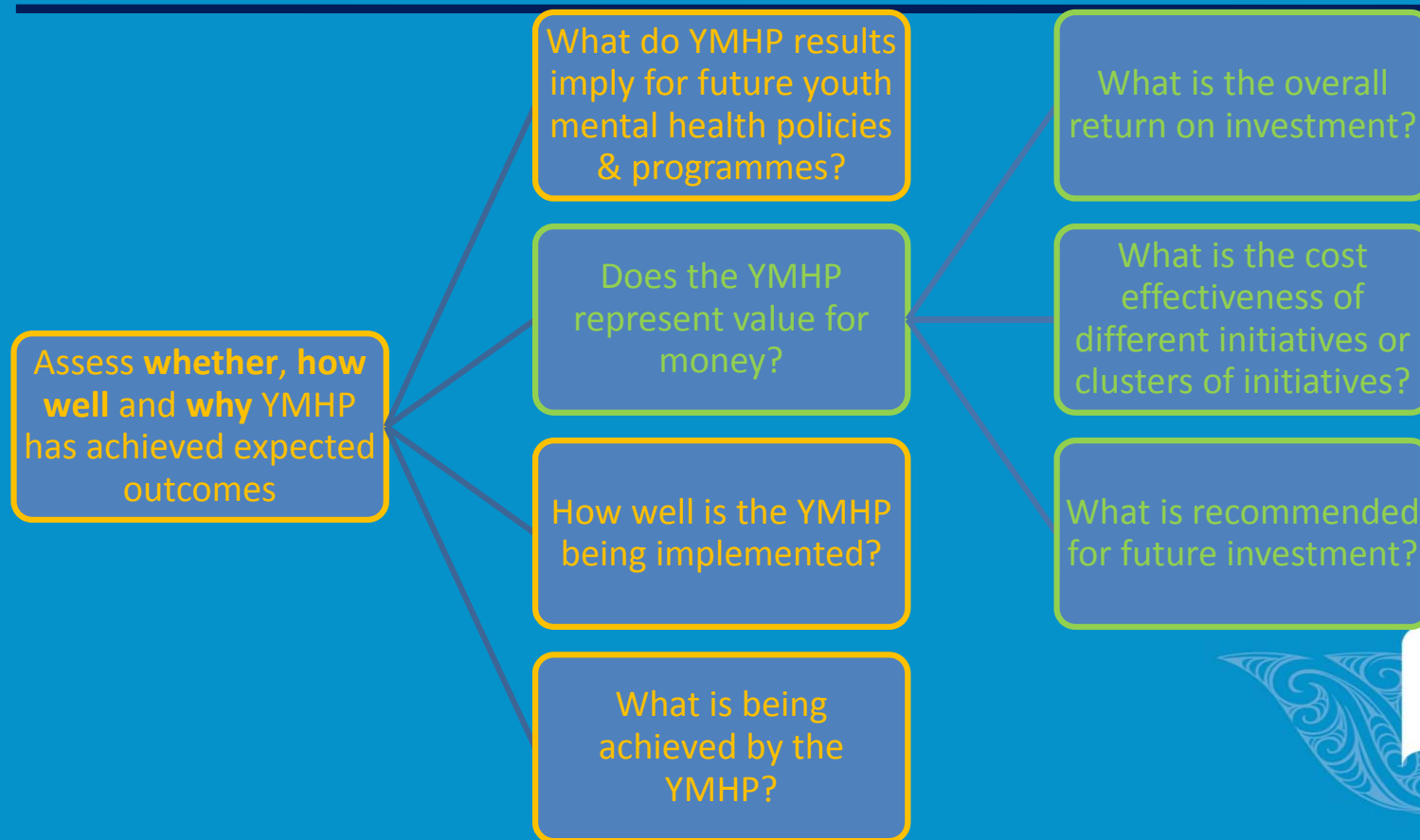
What has worked, why, and under what conditions?

*What did individual initiatives achieve?*

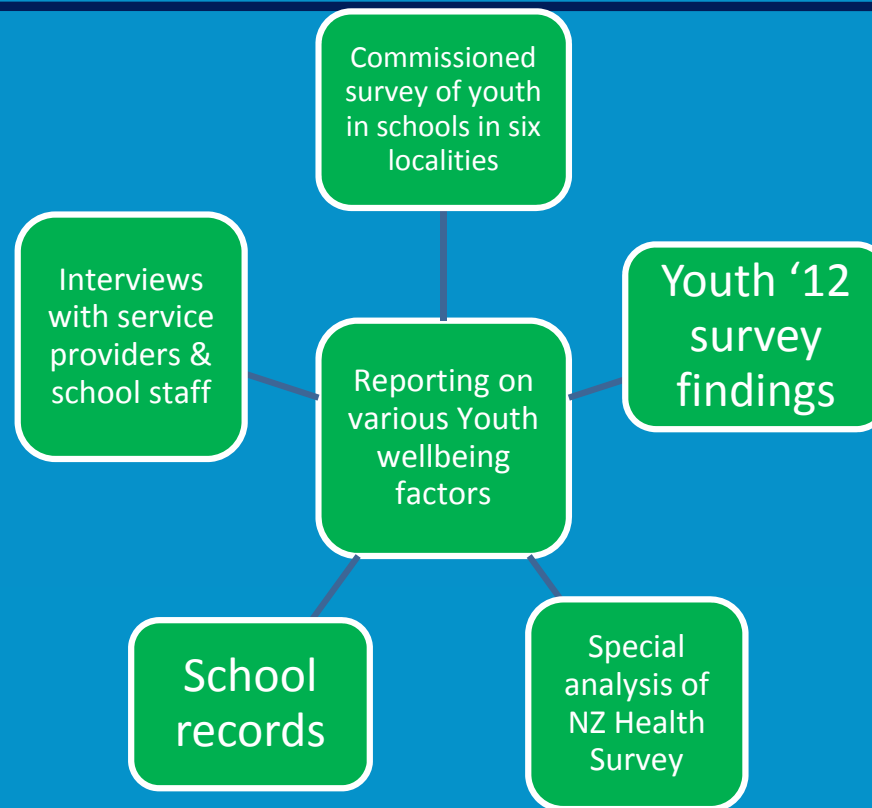
### Cost-Benefit Analysis

Examine the return on investment and cost-effectiveness of YMHP

# Key Evaluation Questions



# “Triangulation”: creating a credible story



# “Triangulation”: creating a credible story

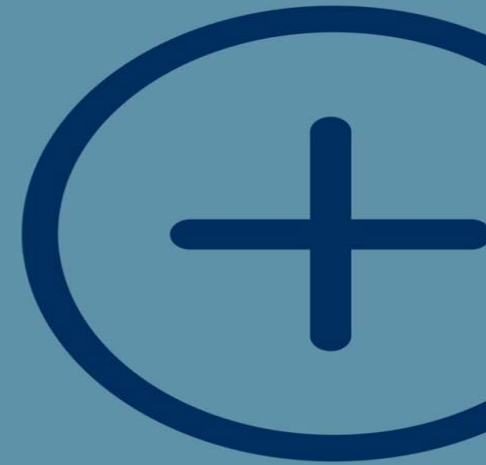
---



# Working with key stakeholders to create credibility

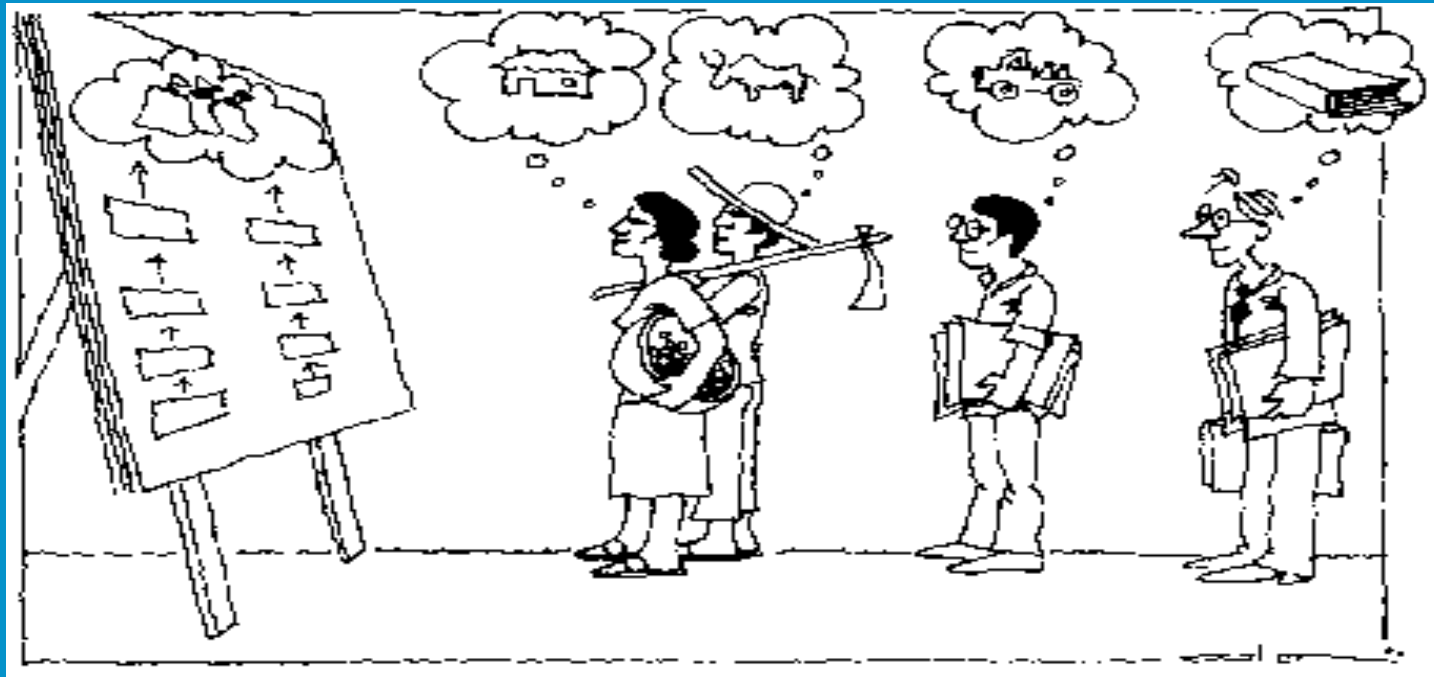


# Keeping the stakeholders happy





# Keep everybody on the same page



# Recognise their expertise

---



Establish regular feedback and reporting, so continuous improvement is possible and those higher up in the chain of command are happy...

We have a board meeting coming up and could use a little input from the evaluation team.

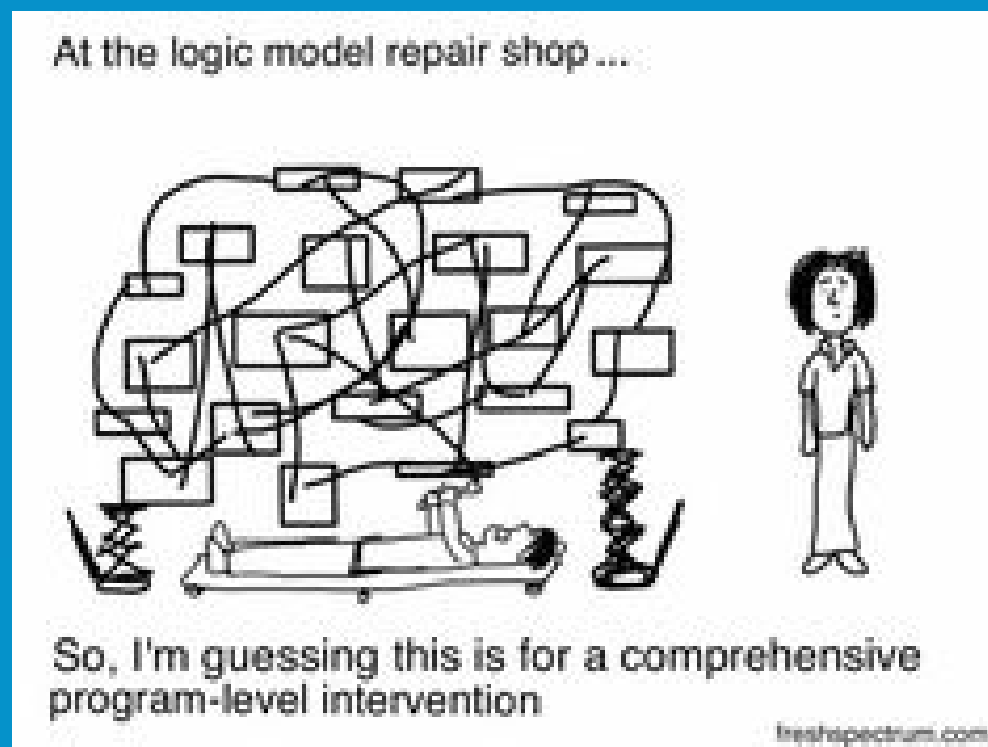


Sorry,  
we're not scheduled  
to provide input  
until year 3.

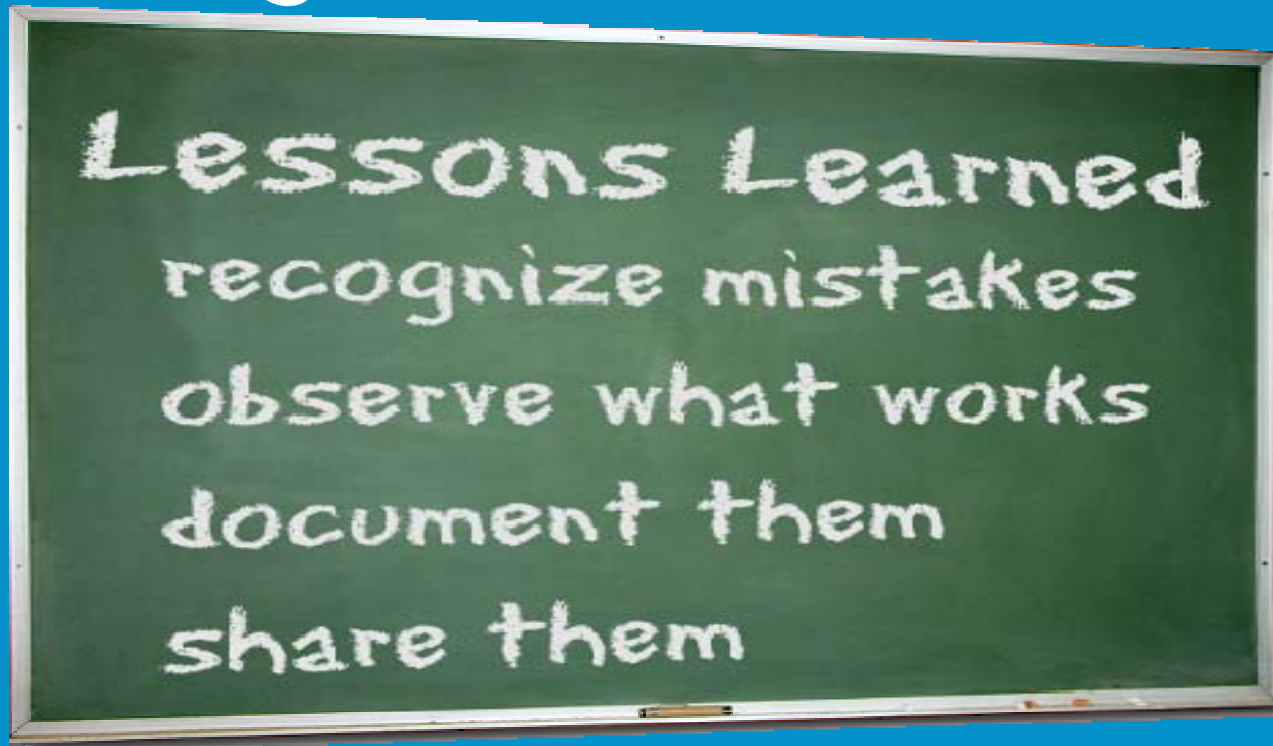


[freshspectrum.com](http://freshspectrum.com)

# Intervention logic(s) identify implementation & population outcomes...



# Going forward



Source: TheSaltChronicles.com

superu



Social Policy Evaluation and Research Unit

# Performance monitoring PLUS evaluation activities throughout the project work

What kind of evaluation  
did you need?



Our 3 year project is coming  
to an end and were told we  
needed an evaluation.

What kind is that?



freshspectrum.com

superu





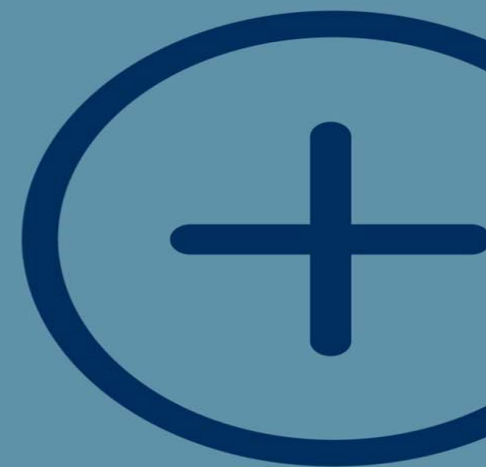


Source: <http://dilbert.com>

Social Policy Evaluation and Research Unit

# YMHP reports

---



[www.superu.govt.nz/ymh](http://www.superu.govt.nz/ymh)





# Questions?

---

- ② [Carolyn.ofallon@superu.govt.nz](mailto:Carolyn.ofallon@superu.govt.nz)
- ② @ceofallon (on twitter)
- ② +64 27 2404196

