



working together | achieving results

Who owns the data?

Considerations of governance, ethics, and use of data for evaluators in 2017.

Kara Scally-Irvine, Kate Averill, Michael Campin, Oscar Loussion, Josie De Bour

EvalStars Ltd

Starting point and a disclaimer!



- We have lots of questions from our own experience
-but we aren't the experts!
- This is forum to crowdsource some ideas and offer some other practical suggestions

We are time poor – so lets get underway!



What are we talking about

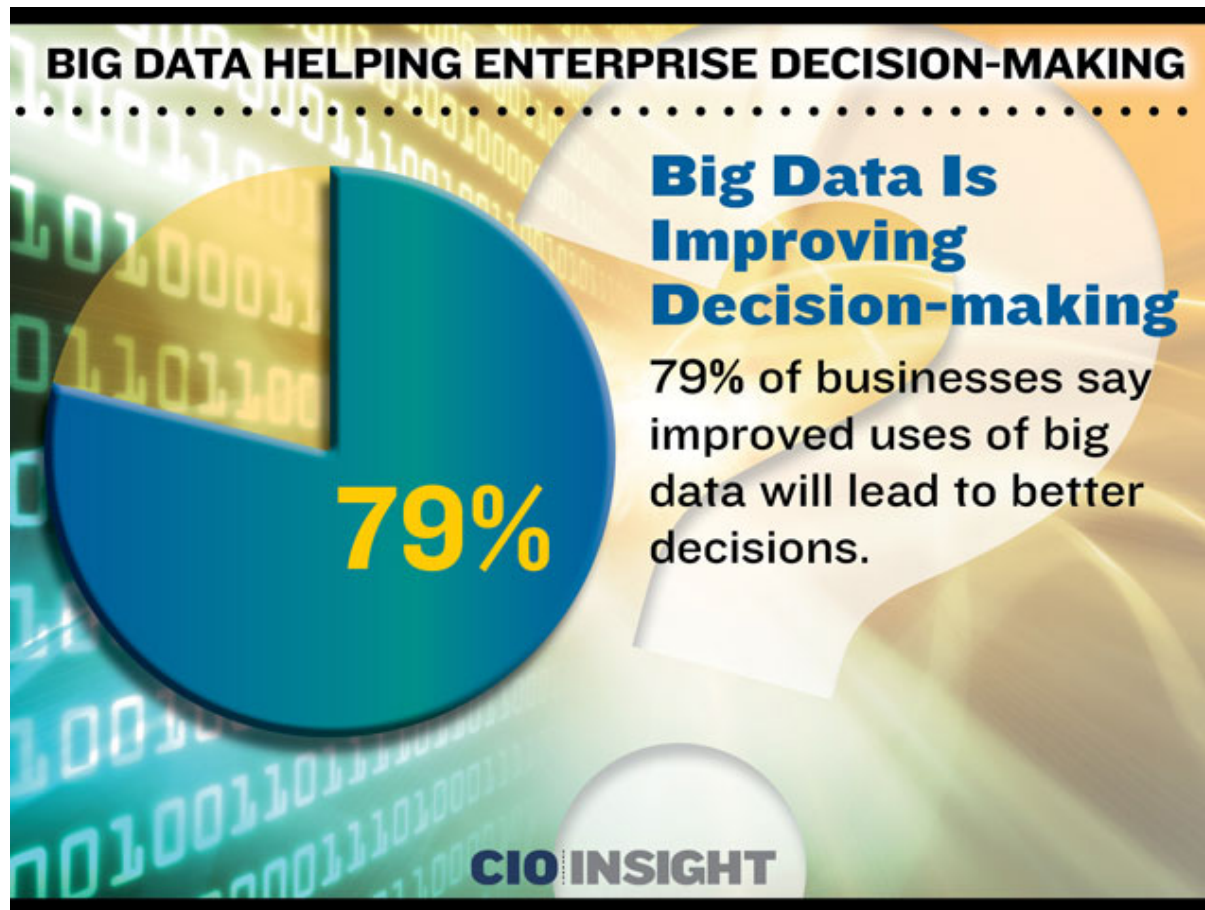


- 'Open' data
- 'Big' data
- 'Data' analytics

Use of technology to massively increase our access to 'data' and our ability to process this data



Huge power in this data





Sensors in the city - big brother is watching, listening and smelling

COLLETTE DEVLIN

Last updated 20:43, November 6 2015



JOHN NICHOLSON / FAIRFAX NZ

Wellington City Council and Japanese company NEC are trialling sensory technology in Cuba Mall as part of a safe city scheme.

Not only can big brother see you, he will soon be able hear and smell you too.

Plans are underway to bring sophisticated Orwellian technology to the streets of Wellington in an effort to beef up safety.



Quick discussion



- What's your experience in this area?
- Discuss briefly in the group around you



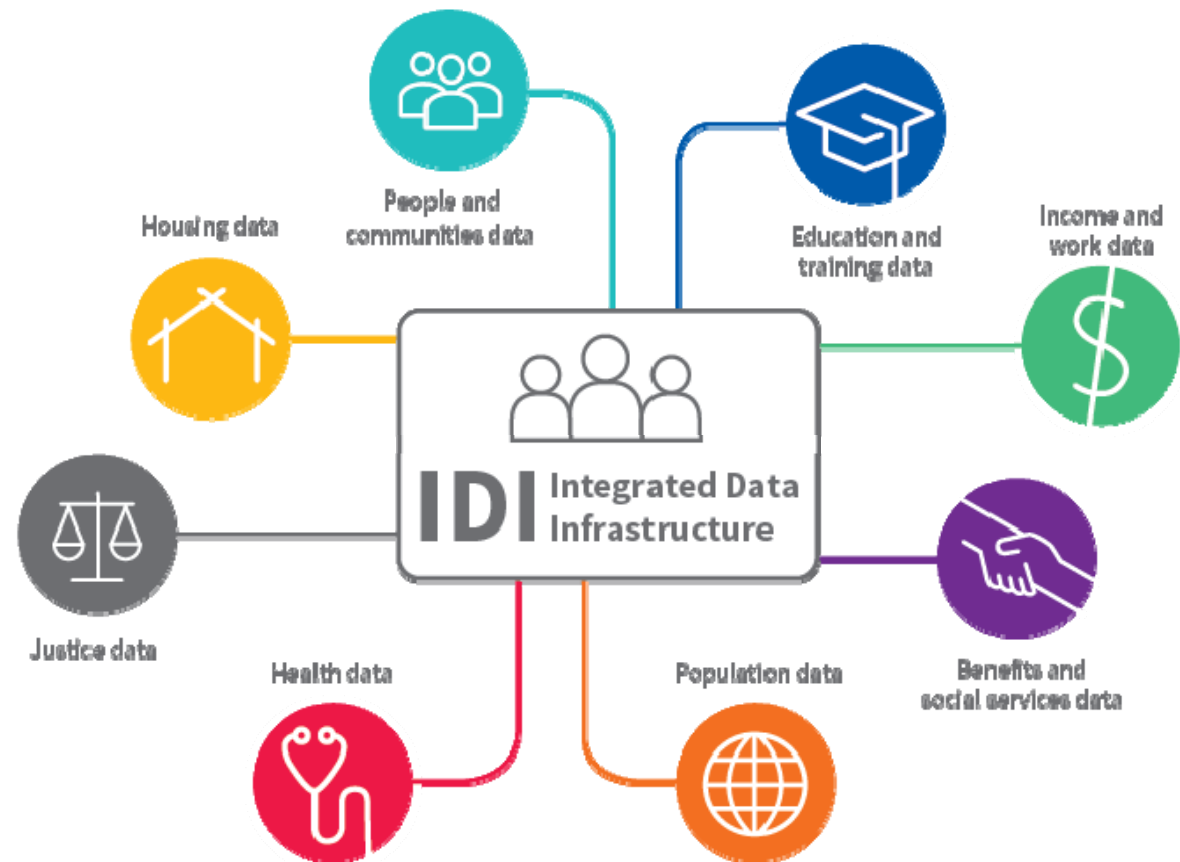
An example – Best practice?

Integrated Data Infrastructure = NZ
[Statistics New Zealand](#)

The '[five safes](#)' control access and use



Informed by [research](#) on public attitudes on data integration



What not to do....

Government demands non-profit clients' personal data before releasing funds

SHAR DAVIS

Last updated 09:29, March 2 2017



JODI YEATS/FAIRFAX NZ

Social service agencies like the Salvation Army, whose volunteers are shown in this file photo, are worried that the Government's requirement to provide client data will deter vulnerable people from seeking help.

The Privacy Commissioner is investigating the Government's demand for client information in exchange for funds, after non-profit groups raised concerns.

The Ministry of Social Development's (MSD) new requirement for non-governmental organisations (NGOs) to supply identifying client information has blindsided non-profit groups.

Every person accessing MSD-funded services must agree to share their personal details – including their name, address, gender, date of birth, primary ethnicity, iwi, as well as dependents' names, dates of birth and relationships to client – for the funding to be released.

Privacy Commissioner has slammed Social Development data collection plans as too intrusive

STACEY KIRK

Last updated 14:51, April 6 2017



ROBYN EDIE/FAIRFAX NZ

Privacy commissioner John Edwards described the Government plans to capture the individual and personal data of vulnerable clients as "excessive and unnecessary", and it could have serious and unintended consequences.

Another related example



Data-sharing blunder by ministry of social development to be probed

TOM PULLAR-STRECKER AND STACEY KIRK
Last updated 12:30, April 12 2017



CAMERON BURNELL/FAIRFAX NZ

Report from officials was "disappointing", says Social Development Minister Anne Tolley.

An independent review will be held into a Social Development Ministry IT system after a privacy blunder involving data supplied by charities.

The ministry was last week forced to shut down an information-sharing portal because of a privacy flaw that could have allowed officials from one non-government organisation (NGO) which had a contract with the ministry to view client data supplied by another.

Social Development Minister Anne Tolley said it was disappointing that a briefing provided by the ministry had raised "more questions than answers" on the security of the system and how it had been overseen.

No privacy breach of vulnerable client data, but review cites poor MSD approach to privacy

STACEY KIRK
Last updated 17:10, May 16 2017



FAIRFAX NZ

Minister of Social Development Anne Tolley has welcomed the findings of a review into a near data-breach which has undermined a key Government policy.

No privacy breach occurred in a Government IT botch up, which gave organisations access to other groups' folders, that could have revealed the personal data of vulnerable clients.

Time for more discussion



- Discuss in groups and consider in more detail how you would

Scenarios:

1. Your own group's example
2. Provided 'admin data'
3. Using data gathered in new way using technology e.g.,
 - Facebook
 - Twitter
 - An app
- Keep your discussion 'to scope' i.e., we aren't trying to solve the world's problems today on data



What have we learned?



[Smart Cities Programme](#) – Treasury Better Public Service Seed Fund, Land Information New Zealand (LINZ) managed, Local Government implemented – Auckland, Wellington, Christchurch

- Use of privacy impact assessments
- Built privacy in as a 'cross-cutting' issue

[1]	CAR	:	100
	BIKE	:	42
[2]	CAR	:	218
	BIKE	:	7
[3]	CAR	:	59
	BIKE	:	0
[4]	CAR	:	524
	BIKE	:	15
[5]	CAR	:	103
	BIKE	:	5

Privacy Commissioner
Te Mana Matapono Matatapu

About us Privacy Act & codes Your rights Privacy for agencies Forums and seminars Data breaches Further resources E-learning News and publications Blog

News and publications

Home / News and publicati... Guidance resources... Privacy Impact Asse...

Privacy Impact Assessment Toolkit

07/07/2015 5:00pm

Thinking of a new product, service or system? Do a Privacy Impact Assessment!

A privacy impact assessment (PIA) is an essential part of many projects and proposals, and can be used to help agencies identify the potential risks arising from their collection, use or handling of personal information, to find out if they are meeting their legal obligations.

PIA focuses on identifying the ways a new proposal or operating system, or changes to an existing process may affect personal privacy, to help organisations make more informed decisions and better manage privacy risks.



Our emerging role in caring for data



- Increasingly having a role as data 'stewards'
- Big implications when we are talking about M&E - ongoing data collection (also see [PWC blog](#))

- This is a skill set we typically do not possess as evaluators
- We need to bring in expertise and advice and incorporate new systems/processes/checks and balances



The advantages of using big data in M&E, such as the speed of data collection, real time evaluation and adaptation.



Practical challenges to using big data in M&E, such as the availability of the data and methodological constraints on how to determine attribution of results.



Enabling factors for applying big data in M&E, such as sectoral characteristics or geographies.

Data governance



Data governance (DG) is the overall management of the availability, usability, integrity and security of [data](#) used in an enterprise. A sound data governance program includes a governing body or council, a defined set of procedures and a plan to execute those procedures.

<http://searchdatamanagement.techtarget.com/definition/data-governance>

- The [Data Governance Institute](#)
- [Data Governance Australia](#)
- Australian example – [Data governance framework for the AIHW](#)
- [Data Futures Partnership](#) – New Zealand



DGA
DATA GOVERNANCE AUSTRALIA

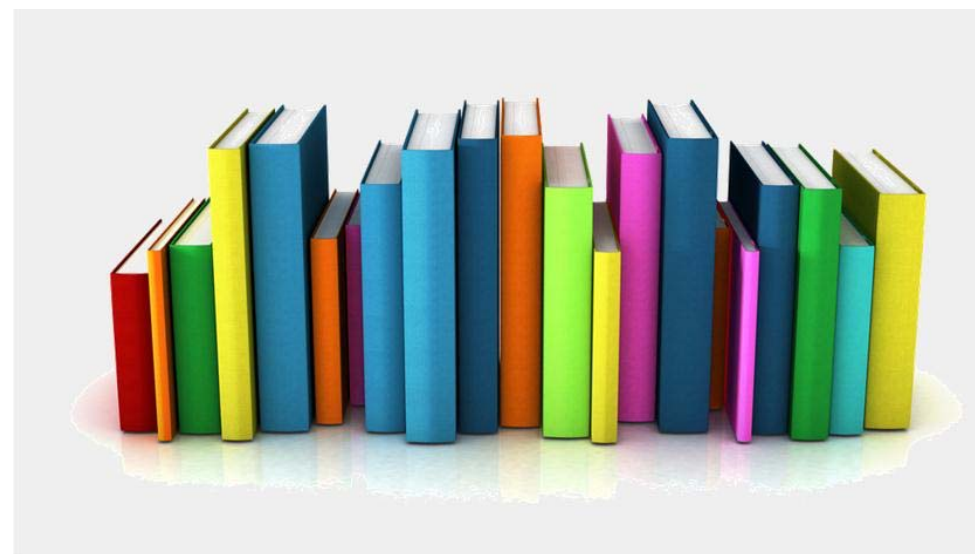
DATA FUTURES PARTNERSHIP

Our experience with Ginigoada Bisnis - Kate Averill's session tomorrow (Wednesday)

A few more resources



- [‘Big data’ in developmental evaluation](#) – useful summary following AEA technology salon session
- [Better evaluation](#) link
- Peter Ellis [‘big data and program/project evaluation’](#) presentation
- [UN Global Pulse report](#) on big data monitoring and evaluation



Thank you!

kara@evalstars.com kate@evalstars.com

