

Power and political positioning in Indigenous evaluation

Exploring the relationship between developmental evaluation and cultural responsiveness in evaluation

Samantha Togni, Lynne Rogers & Sonya Egert

AES International Conference, Canberra, 6 September 2017

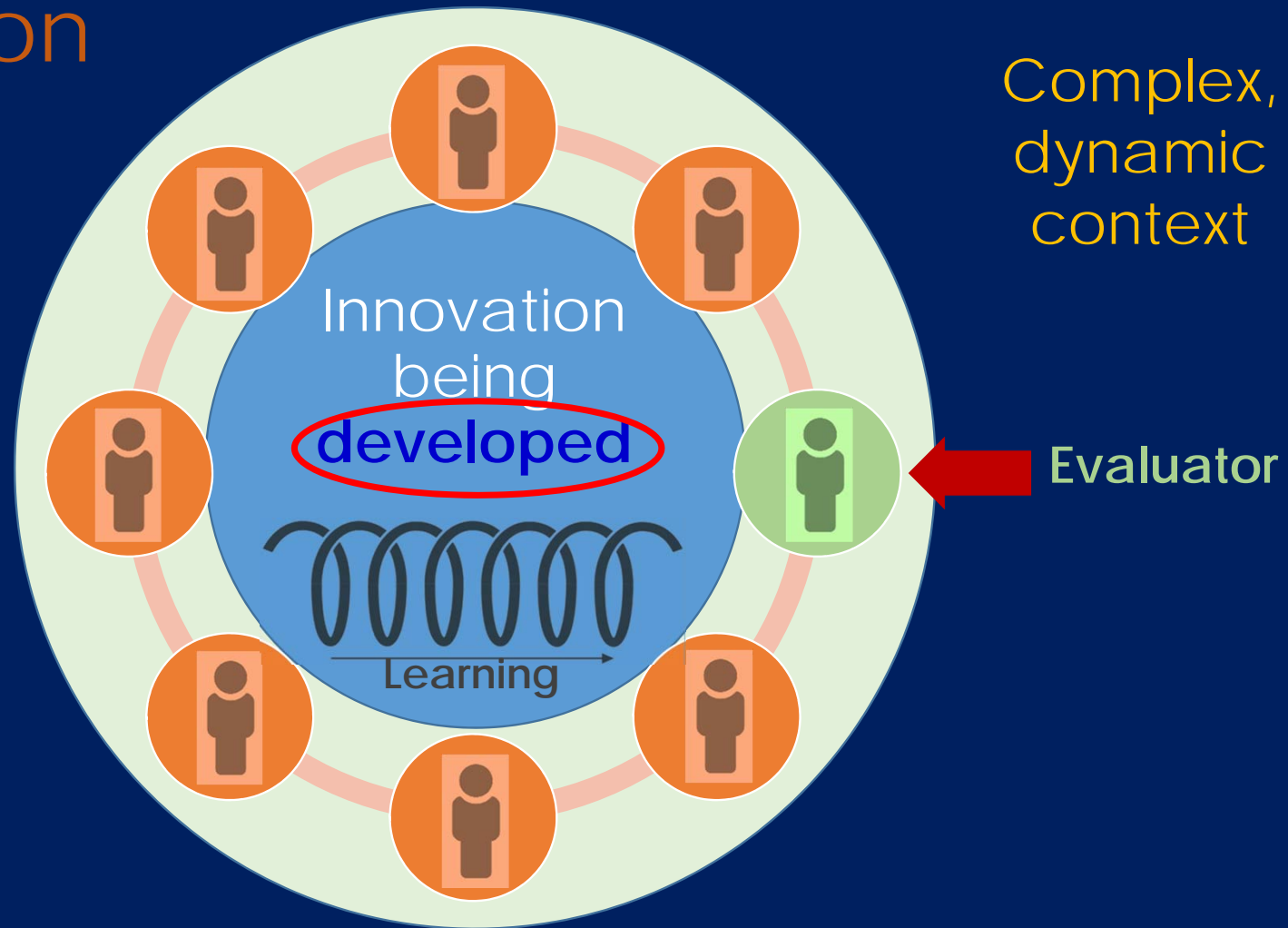
Today's presentation

- Overview of HOMES innovation, team & context
- Overview of developmental evaluation
- How we have used developmental evaluation
- Lynne Roger's & Sonya Egert's stories of developmental evaluation
- Developmental evaluation: power relations & different knowledge systems
- Developmental evaluation & cultural responsiveness – what we are learning

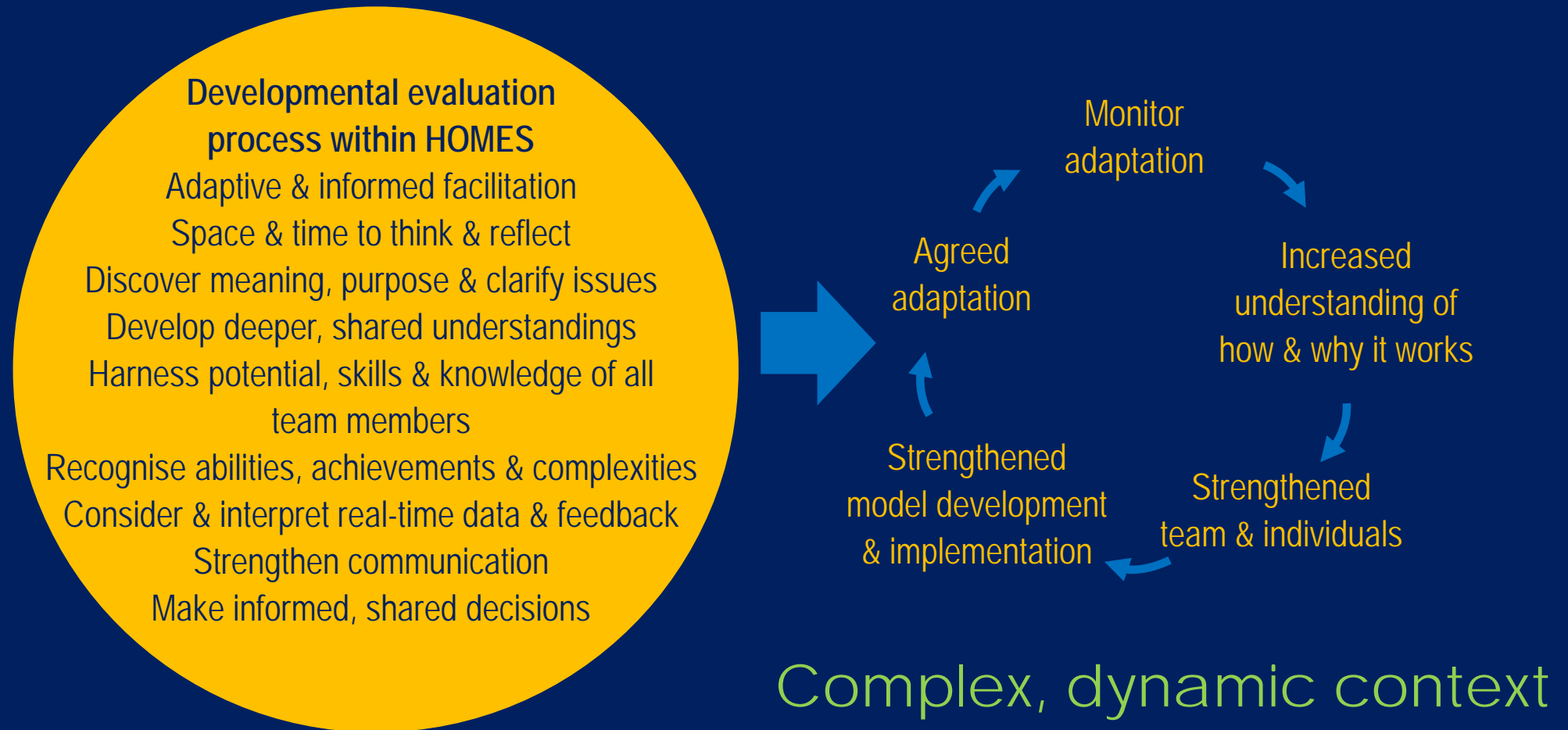
Home-based Outreach Chronic Disease Management Exploratory (HOME) Study

Research collaboration	Inala Indigenous Health Service, Brisbane & Kanyini Vascular Collaboration researchers
Innovation	To develop a home-based, patient-centred outreach model of chronic disease management that is acceptable, feasible, & appropriate to Aboriginal & Torres Strait Islander people with chronic disease, their families, and their primary health care provider
Approach	Exploratory study using developmental evaluation

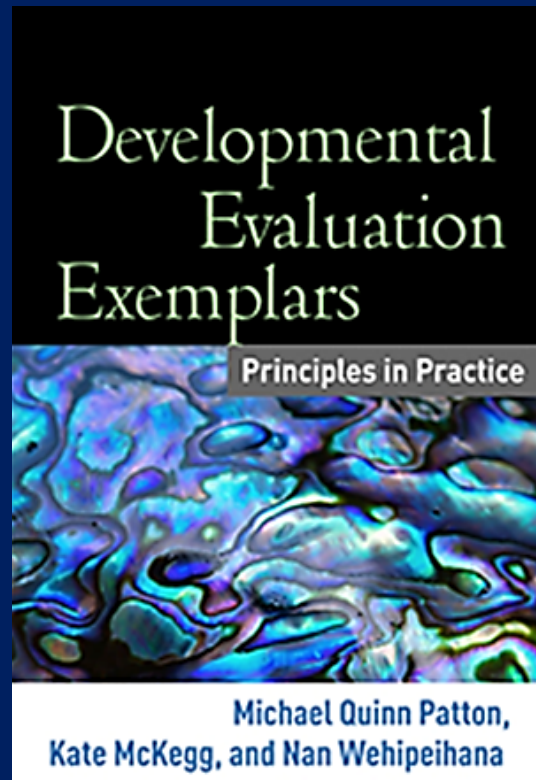
Developmental evaluation



Developmental evaluation in practice



Developmental evaluation: essential principles



- Developmental purpose
- Evaluation rigour
- Utilisation focus
- Innovation niche
- Complexity perspective
- Systems thinking
- Co-creation
- Timely feedback

Culture in our context

Different
knowledge systems

Different
knowledge bases



My Journey with Developmental Evaluation

Lynne Rogers
Program Coordinator
Inala Indigenous Health Service

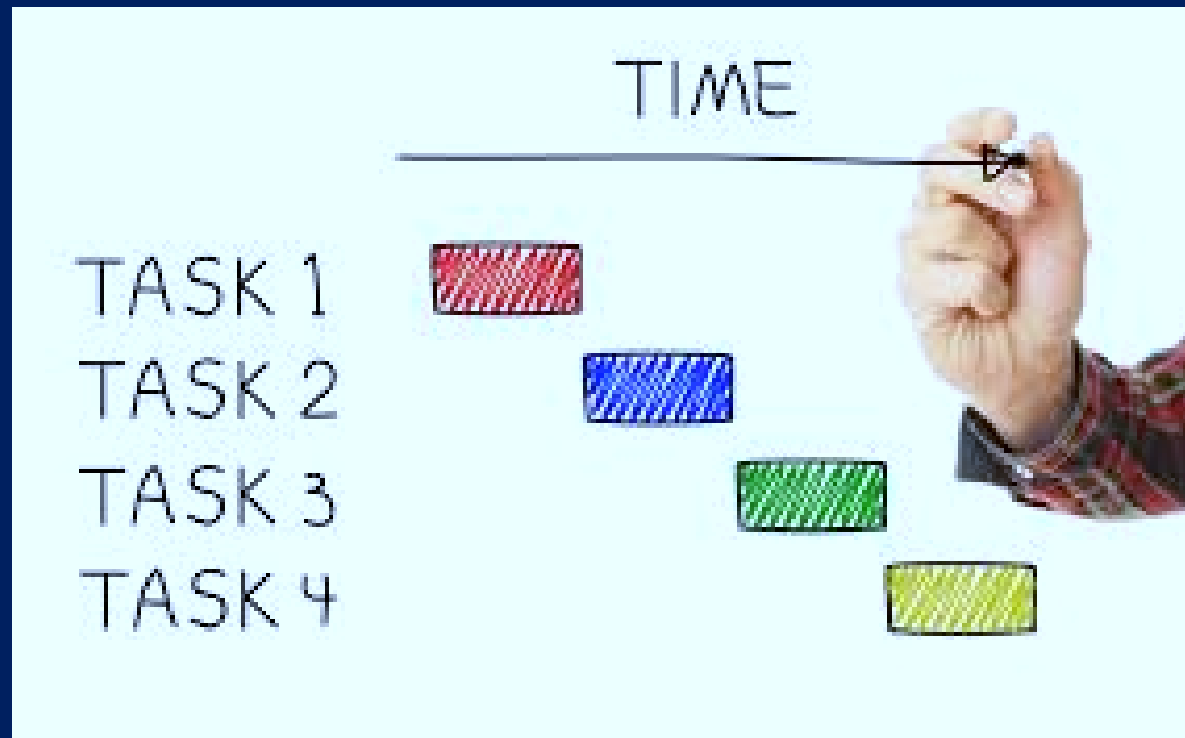
My Developmental Evaluation Experience

Personal gains + Professional gains

My Background



My Working Style Prior to IIHS



The growth of my new working style



HOMES

My Intro to Developmental Evaluation



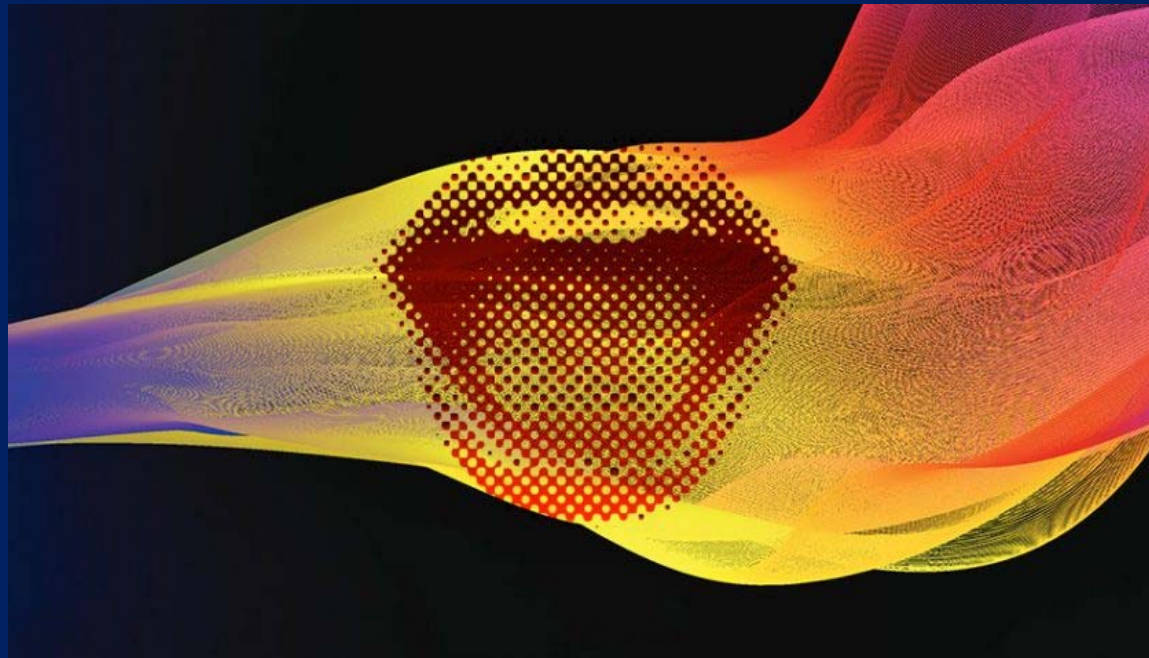
HOMES

Developmental Evaluation and Me

- What I had to say mattered
- My knowledge mattered
 - » I contributed to the model of care

HOMES

Developmental Evaluation and Me



Thankfulness and Frustrations



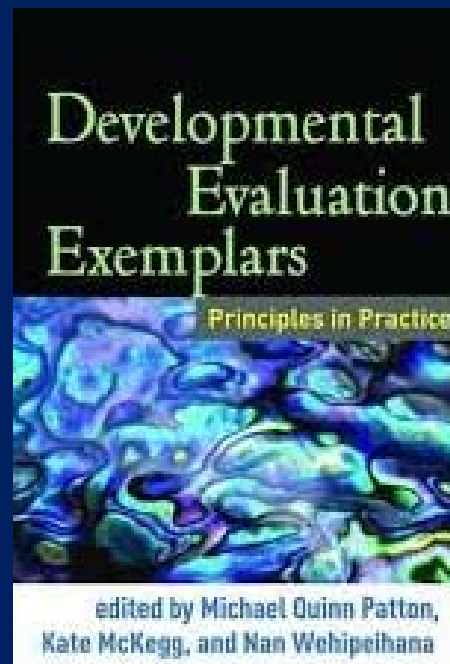
Thankfulness
MAY NOT HAVE THE POWER TO
change situations,
BUT IT HAS THE POWER TO
change me.

Frustration,
although quite
painful at times,
is a very positive
and essential
part of success.

— *Bo Bennett*

QUOTEDIARY.NET

The Future



Developmental evaluation & power

For me personally...having those workshops, it just made me feel empowered and able to do things to help and contribute to the overall model of care...it contributed to my feeling of worth, my sense of worth.

Lynne Rogers, Program Coordinator, 2015

(Source: Togni et al., 2015)

Developmental evaluation & power



Sonya Egert
Indigenous Research
Officer

...we're made up of a team and we have...nurses and...people from...different work areas, we've got...my line manager and she's just a participant...she's not my line manager within the workshop...everybody is equal and everybody contributes equally within that workshop. So nobody's above anybody else or...those things are sort of, you know left at the door. Like our titles...if you would call them that. So for me I think it's really great because I have gained confidence.

Co-creation

Co-creation principle: Develop the innovation and evaluation together – interwoven, interdependent, iterative and co-created – so that developmental evaluation becomes part of the change process. Patton, 2015

Developmental evaluation disrupts the usual power relations

Evaluation in Indigenous contexts

- Bleak history – research and evaluation have been instruments of colonisation, power and control
- Much evaluation in Indigenous contexts in Australia continues to be lead by non-Indigenous evaluators
- Increasing recognition of importance of culture & cultural context in evaluation
- Indigenous peoples' right to "evaluation practices that are 'of, for, by and with us'" (Kawakami et al., 2008)

Developmental evaluation & cultural responsiveness



Sonya Egert
Indigenous Research
Officer

Well I think that...all the way through this, the work that we've done...from the very beginning we've all contributed. Our team has contributed. Our health professionals within our clinic have contributed and most importantly our clients have contributed to...this whole process. And that's the most important part because the clients are the people that are receiving this care so we need to ensure that we are providing something that...is meeting their needs. So I think...that I've played...a key role in that...

Creating safety: relationships, trust & privilege



Sonya Egert
Indigenous Research
Officer

When you're [DE evaluator] facilitating the workshops it always does feel so comfortable and it does feel so safe...having you state that at the beginning [of each workshop] just makes everybody feel comfortable and at ease and able to be so open and honest...some really strong stories...have been shared and people have been open and vulnerable in the workshop space and I just feel that that would never occur if people, if each individual within that workshop didn't feel that they were in a space where they can be vulnerable or they can open up or they can say whatever they feel needs to be said.

Valuing & harnessing different knowledge & ways of seeing for change



You know there was just so much learning that happened because of that openness and what was shared I guess.

Sonya Egert
Indigenous Research Officer

Source: Colin & Garrow (1996)

Thank you



Acknowledgements

HOMES Team: Deborah Askew, Nichola Potter,
Sonya Egert, Elizabeth Darlington, Audrey Burgin

Supervisors: A/Prof. Kim Humphery, Prof. Patricia
Rogers, Prof. Barry Judd

Carol Watson

Kate McKegg

samantha.togni@bigpond.com | Lynne.Rogers2@health.qld.gov.au