

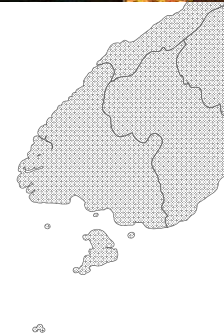
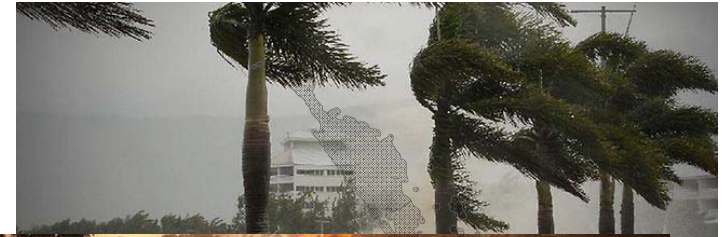
# Dancing Across Landscapes

Slow Slow Quick Quick

[www.litmus.co.nz](http://www.litmus.co.nz)

LITMUS

# Where were you in 2011?





**For me....**



# On the work front....



Bowel Screening Pilot



**Cancer Nurse Coordinators**  
Improving patient care

---

Cancer Nurse Coordination Initiative



Alcohol and Other Drug Treatment Court



Low Cost Oral Health Trials in Three  
District Health Boards

# Dancing the foxtrot



# The lessons from the slow steps

SYSTEM AND POPULATION FOCUSED **COMPLEX** DISPUTED **MANY EYES**



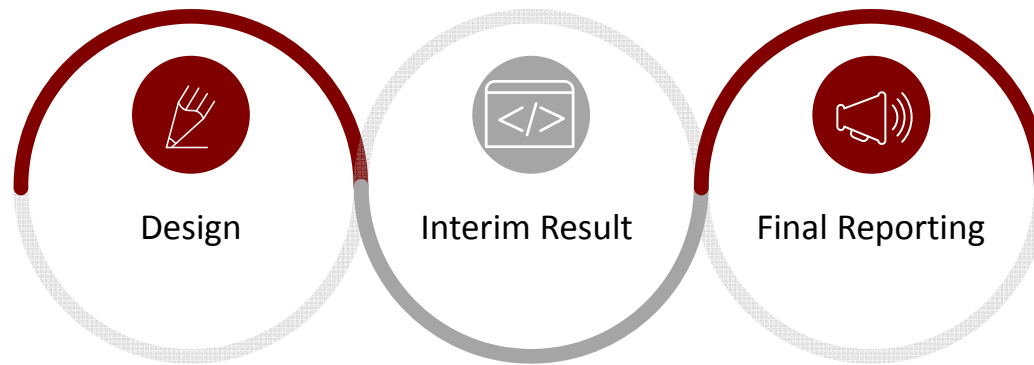
---

**Cancer Nurse Coordinators**

Improving patient care

---

# Lesson in three steps...



**1** Choreography



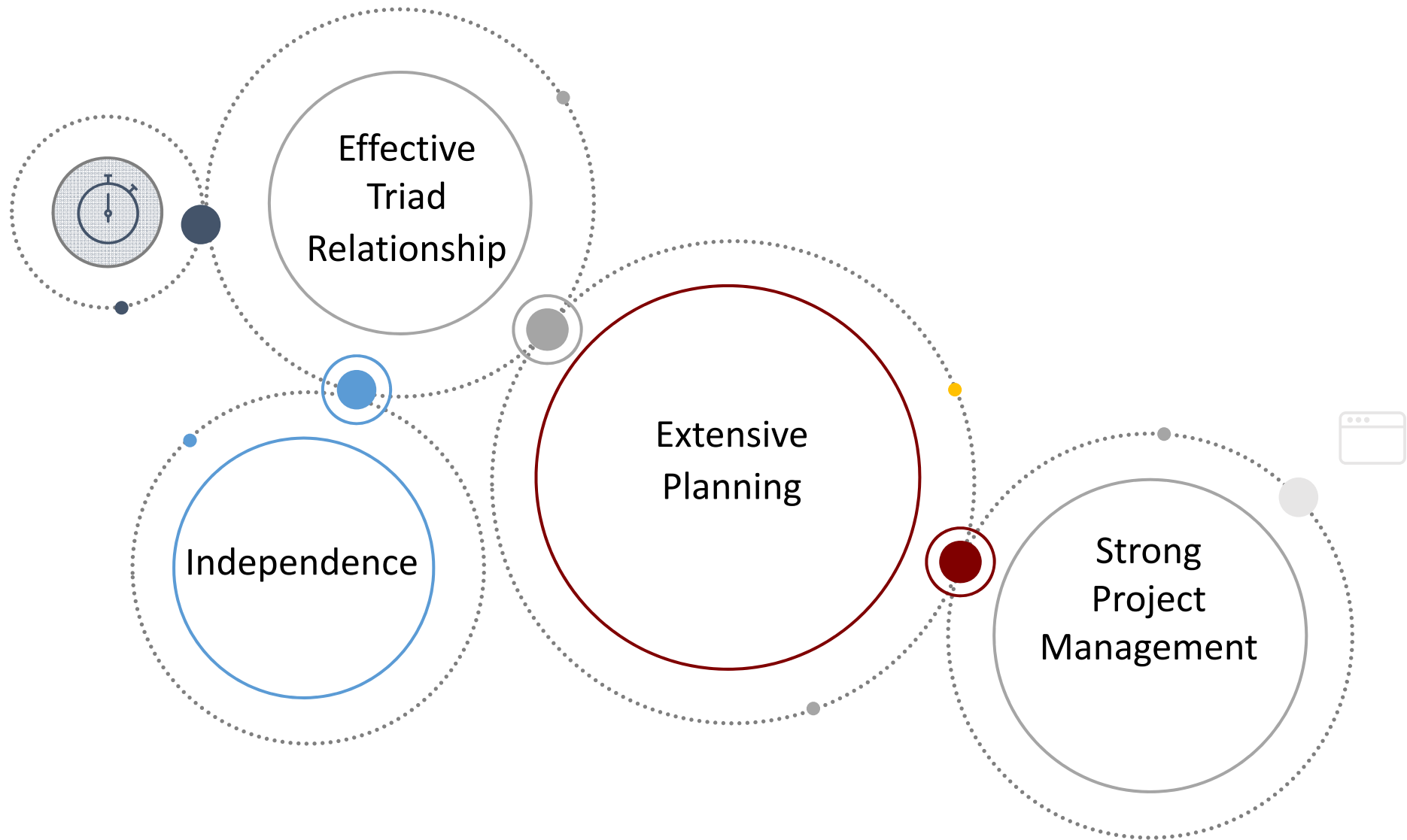
**2** Dress Rehearsal



**3** Grand Finale

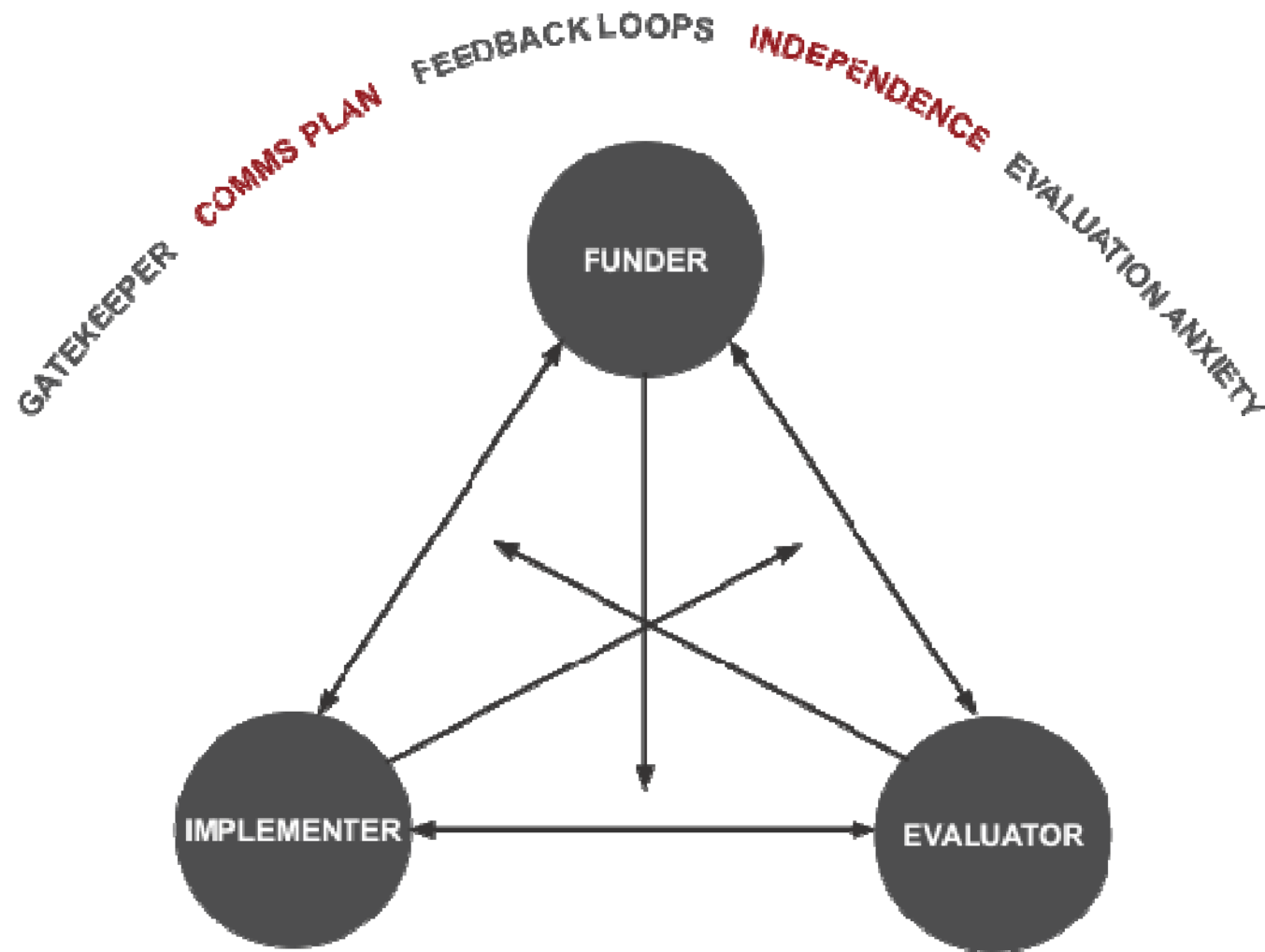


# Choreographing the design phase

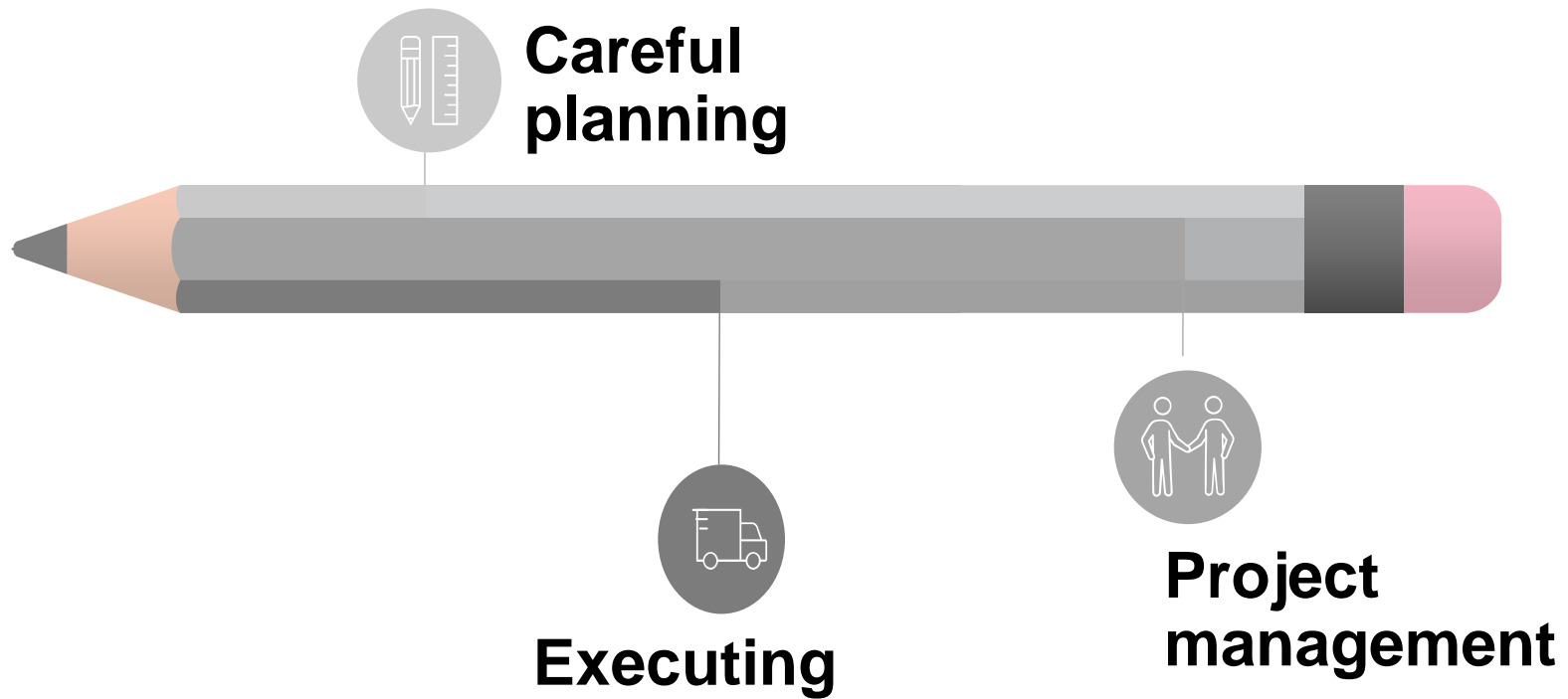




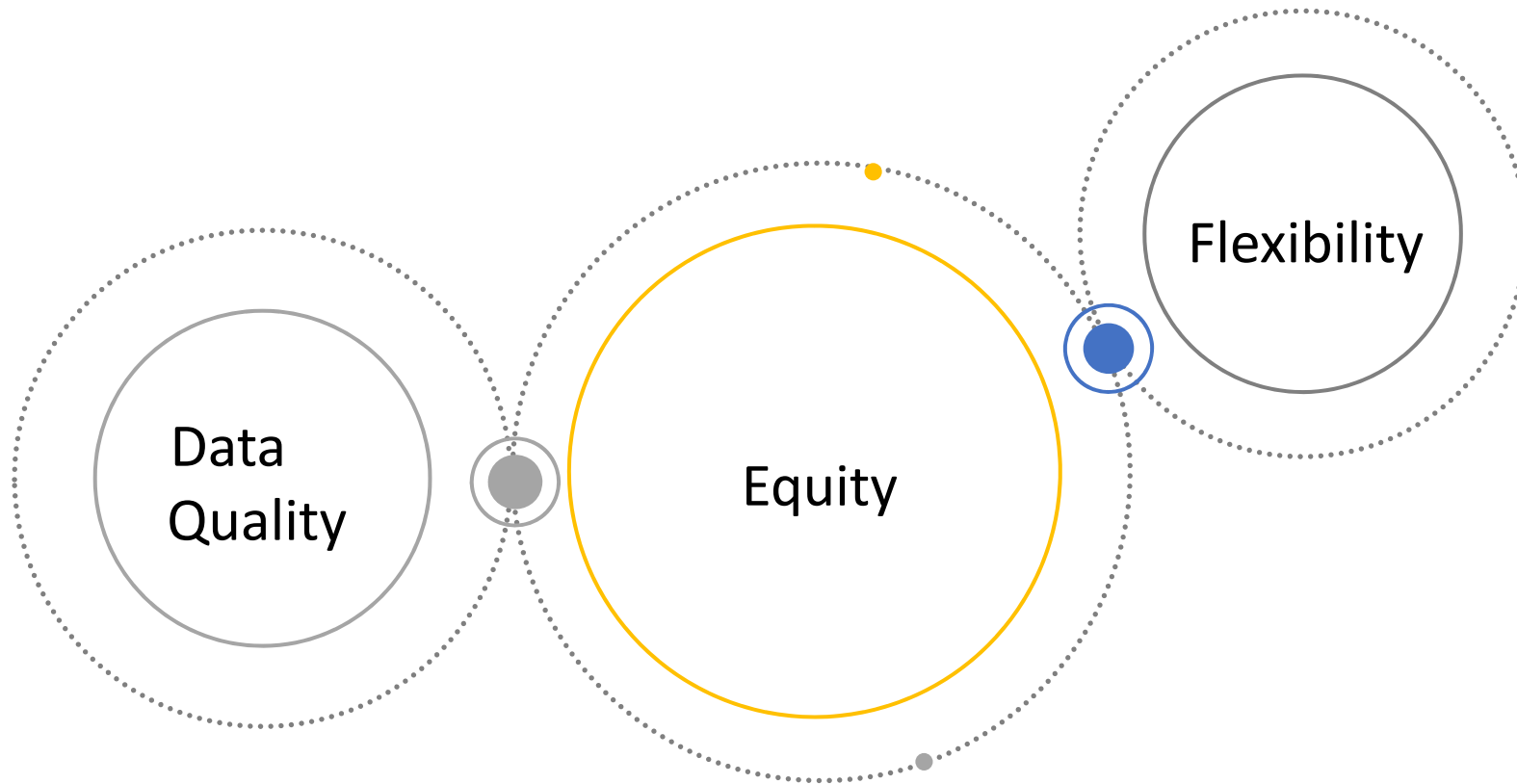
# Relationships vs independence



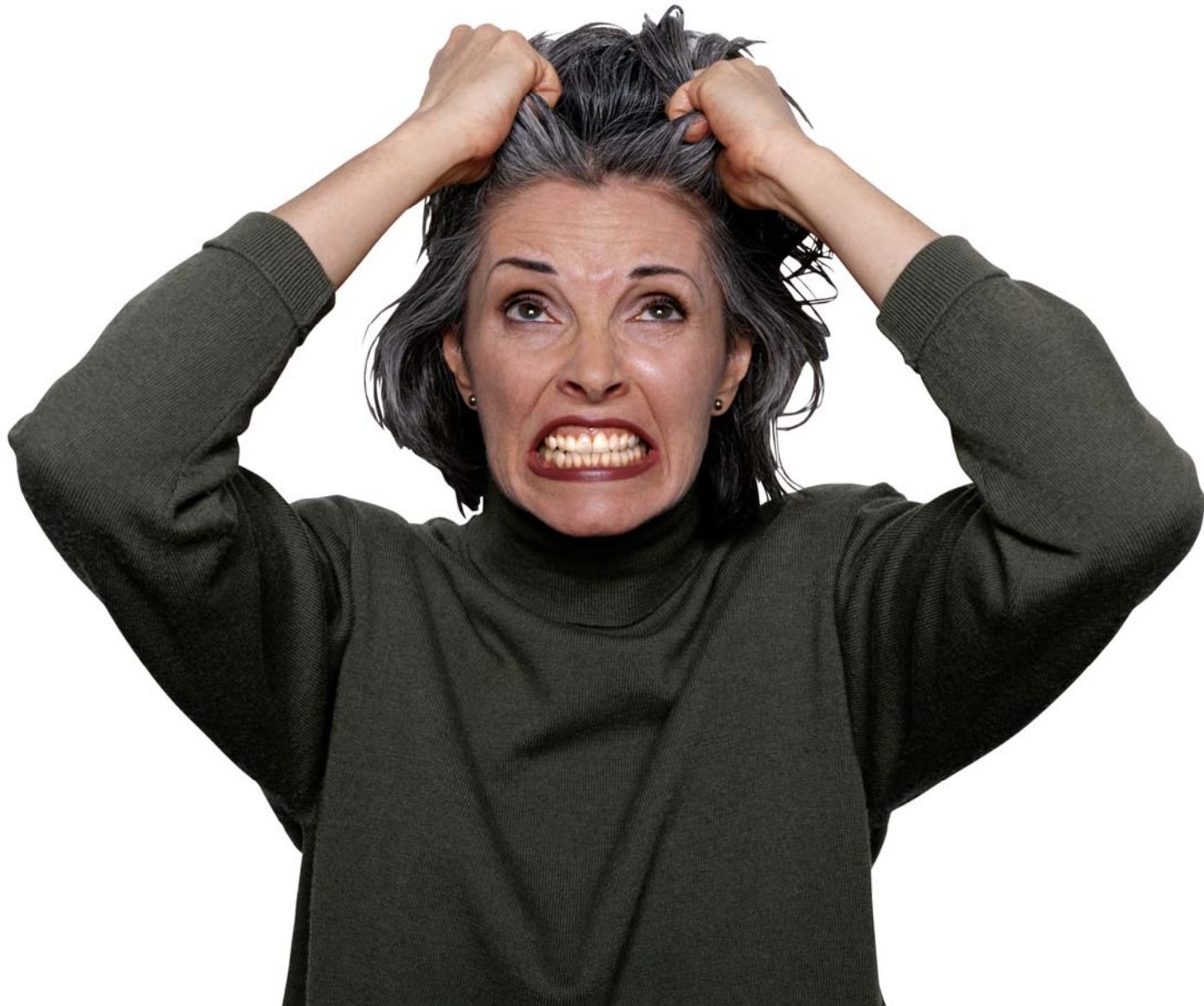
# Plan and execute



# The dress rehearsal of the interim reports



**Data**





# Drive for equity



**Need for flexibility in design**

# The grand finale



## Quick Quick recap

Plan well, execute, be flexible

Have a trusted multi-disciplinary team

Balance relationship and independence

Build evaluation utility

Check data quality and assumptions

Keep the eye on equity

Seek review and clinical input

# Transferring learnings to 2016





# Quick Quick

Start with ethical thinking

Planning is critical

Work with trusted collaborators

Involve sector experts

Relationship and independence

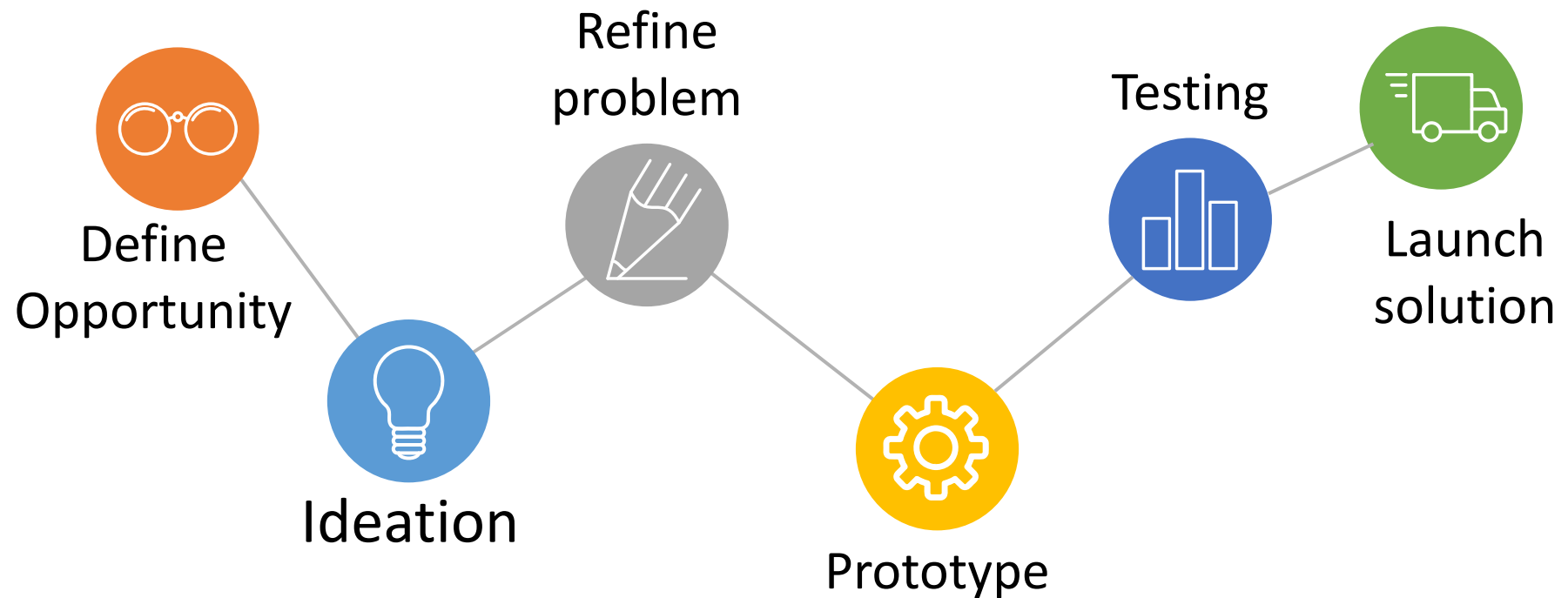
Feedback loops

Data quality

Think about equity

**Done is better than perfect**

# Design thinking and evaluation



**Dancing to a new beat?**

**Join us at the AES Design SIG**



*Nā tō rourou, nā taku  
rourou, ka ora ai te iwi.*

With your contribution  
and my contribution,  
the people will thrive

[www.litmus.co.nz](http://www.litmus.co.nz)

**Liz Smith**

**Partner**

**0064 21 473 885**

**[liz@litmus.co.nz](mailto:liz@litmus.co.nz)**

**LITMUS**