

Exploring the people landscape within developmental evaluation's complexity landscape

Samantha Togni & Lynne Rogers

On behalf of the HOMES Team: Deborah Askew, Samantha Togni, Lynne Rogers, Sonya Egert, Elizabeth Darlington, Audrey Burgin & Nichola Potter
Inala Indigenous Health Service, Brisbane

AES International Conference, Perth, 20 September 2016



Queensland Government

Today's presentation

- Overview of HOMES
- Overview of developmental evaluation
- Overview of the team & context
- How we have used developmental evaluation
- Lynne's story of developmental evaluation
- Exploring the people story within developmental evaluation – what we have learned

Home-based Outreach Chronic Disease Management Exploratory (HOME) Study

Research collaboration

Inala Indigenous Health Service, Brisbane & Kanyini Vascular Collaboration researchers

Innovation

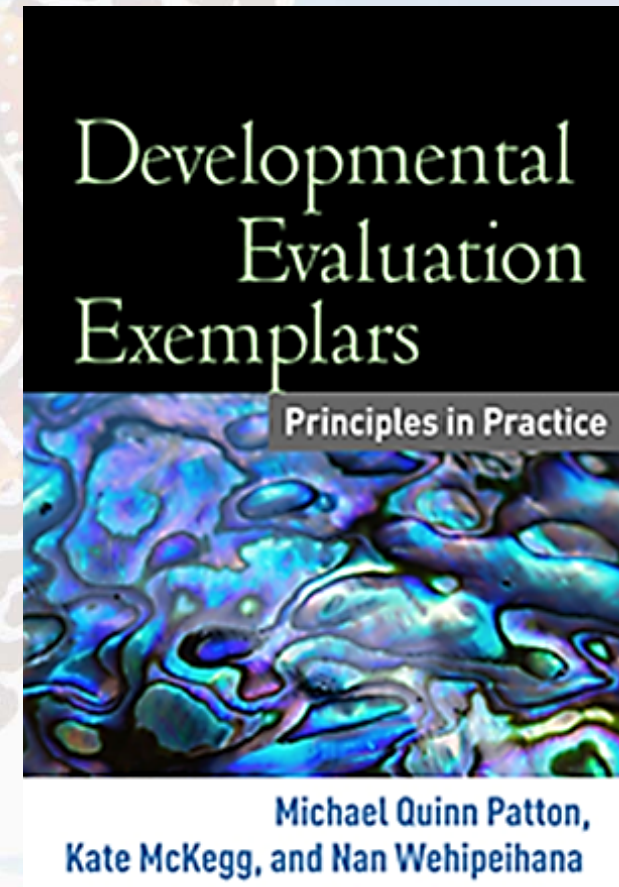
To develop a home-based, patient-centred outreach model of chronic disease management that is acceptable, feasible, & appropriate to Aboriginal & Torres Strait Islander people with chronic disease, their families, and their primary health care provider

Approach

Exploratory study using developmental evaluation

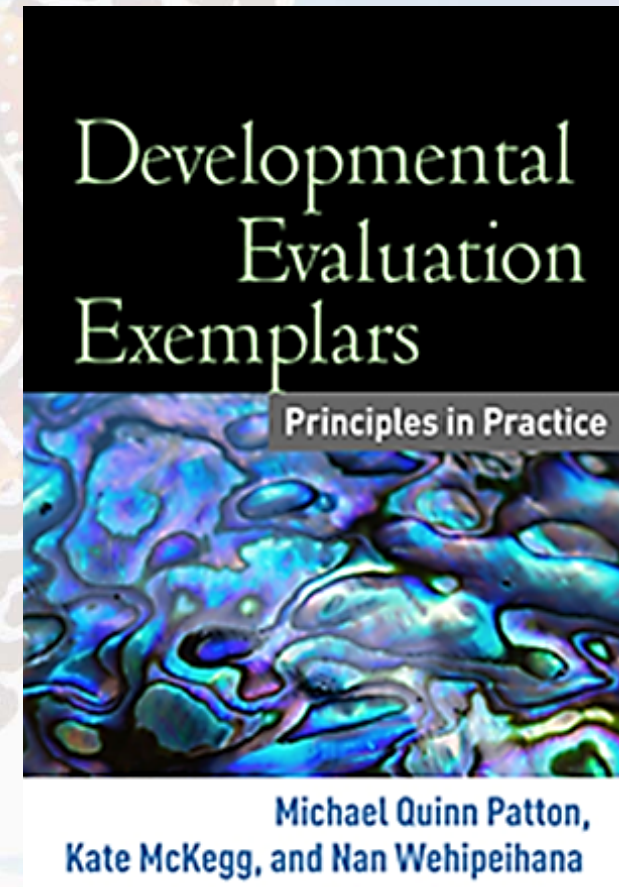
Developmental evaluation

- Developmental purpose
- Evaluation rigour
- Utilisation focus
- Innovation niche
- Complexity perspective
- Systems thinking
- Co-creation
- Timely feedback

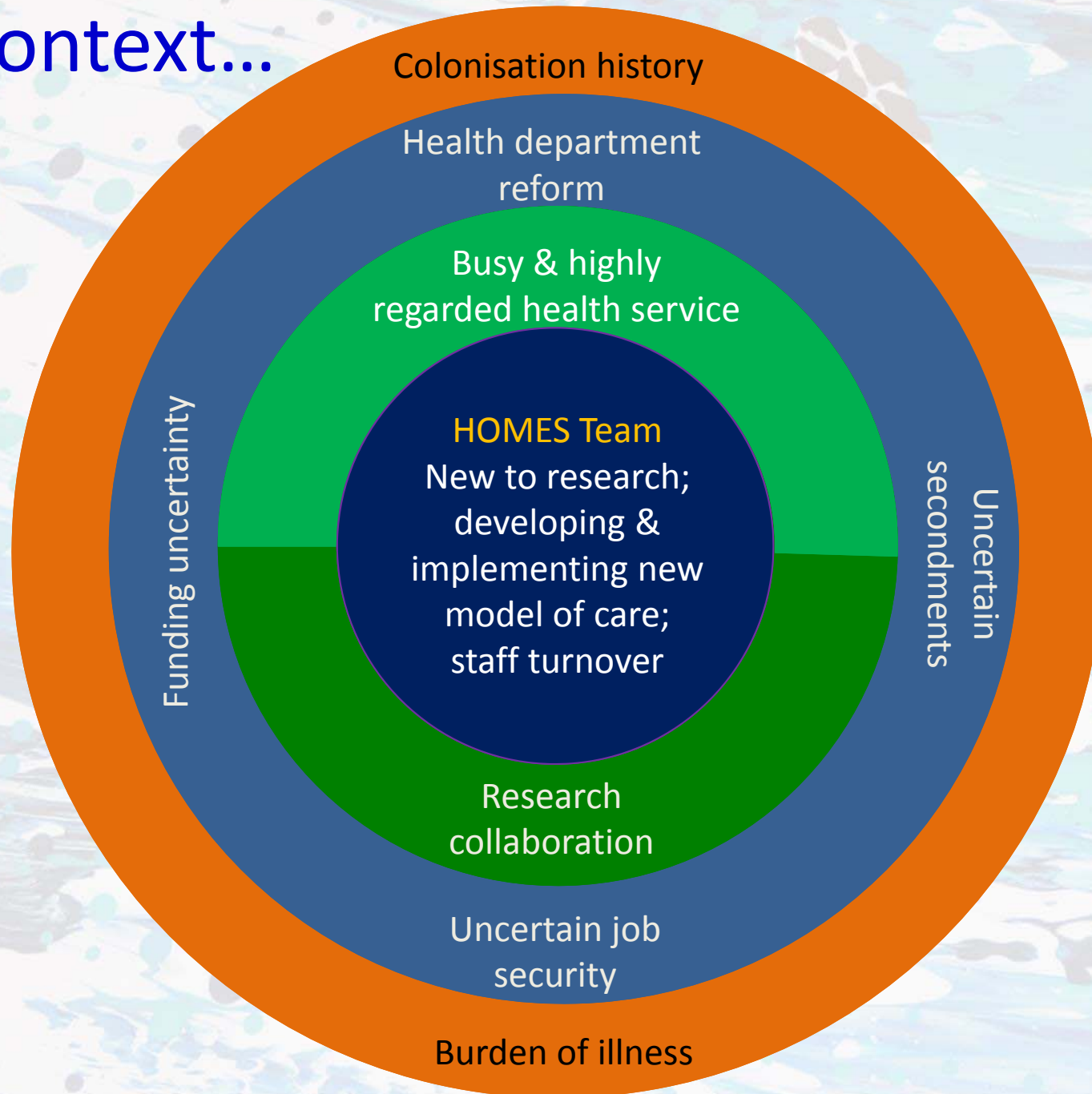


Developmental evaluation

- Developmental purpose
- Evaluation rigour
- Utilisation focus
- Innovation niche
- Complexity perspective
- Systems thinking
- **Co-creation**
- Timely feedback



The context...



The HOMES team

Case managers:

Elizabeth Darlington
& Aman Banjania



**Program
Coordinator:**
Lynne Rogers

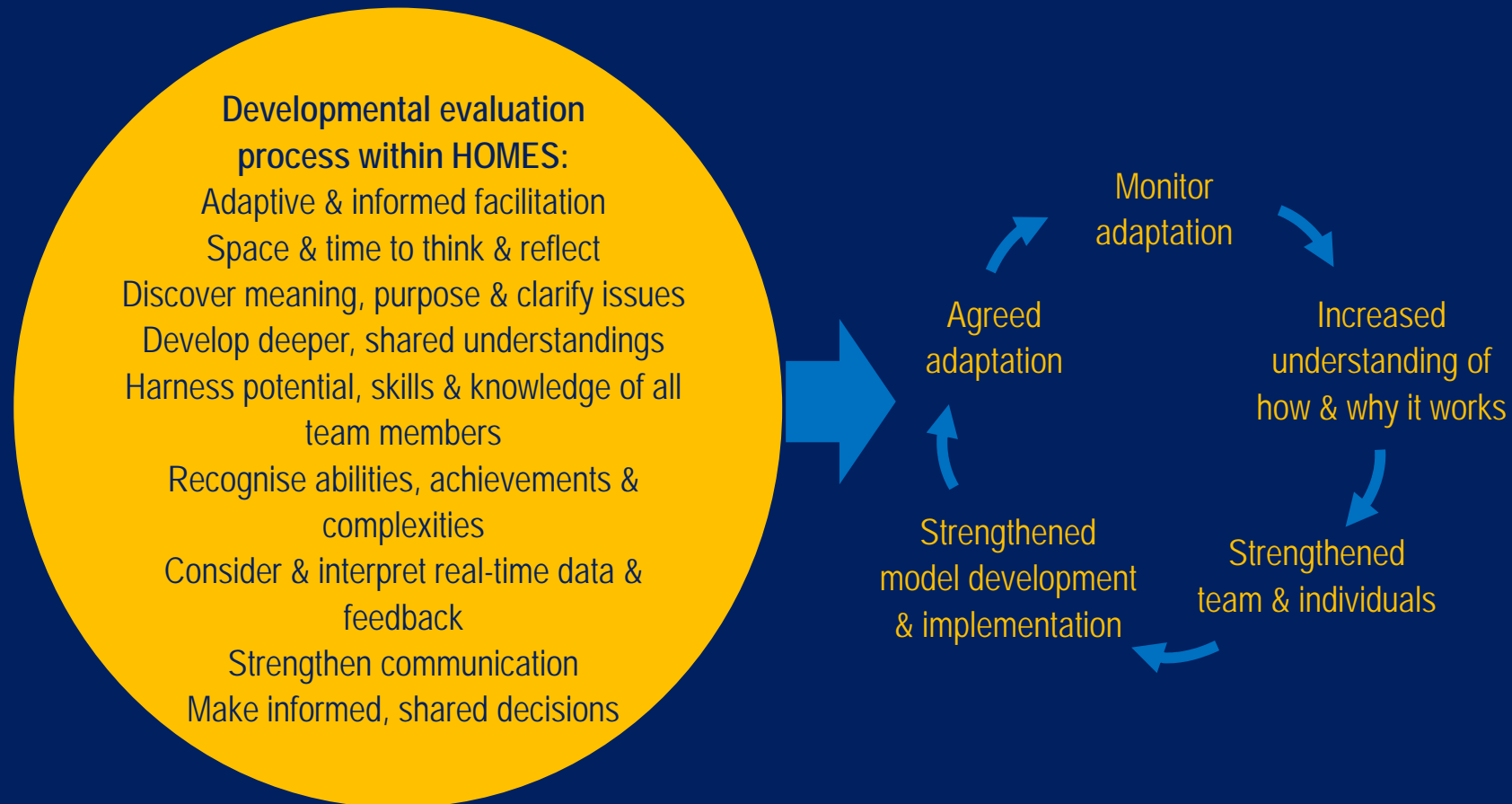
**Developmental
evaluator:**
Samantha Togni



Indigenous Research Officer:
Sonya Egert

Research Director:
Deborah Askew

Developmental evaluation in practice



Complex, dynamic context



My Story within developmental evaluation

Lynne Rogers

Program Coordinator

Southern Qld Centre of Excellence in Aboriginal
and Torres Strait Islander Primary Health Care

My Professional History

Work Life:

30 years experience within
Queensland Health

Progression through the ranks

My Professional Experience

Working Style:

Pathways followed



Staying within the box

Inala Indigenous Health Life and HOMES

New project/study

Building from scratch

Frustrations in the beginning



Developmental Evaluation ... at the start



Developmental Evaluation ... my thoughts

Clients
Wellbeing

Learning

Joining together

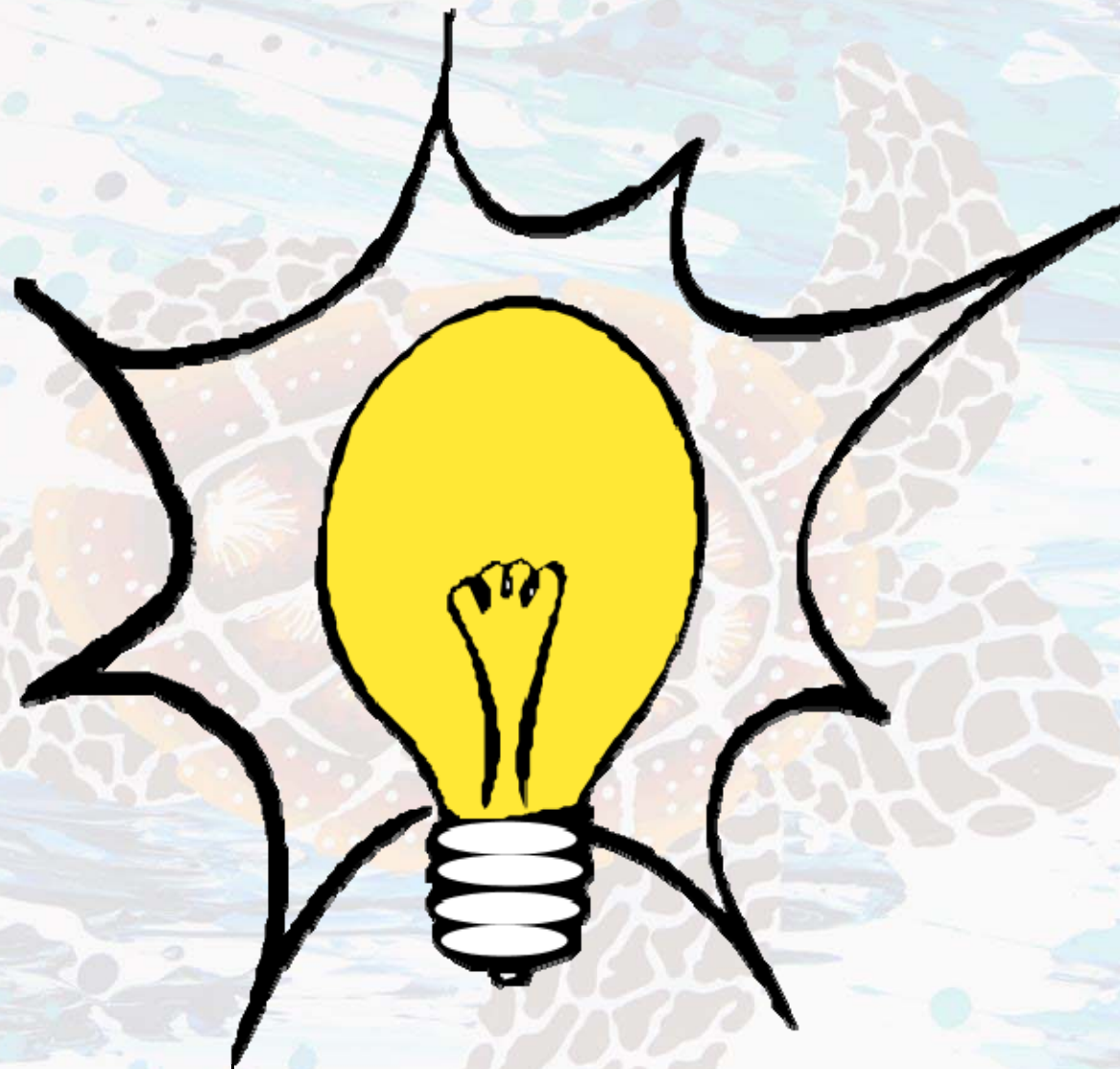
Challenging

Gaining
confidence

Sense of purpose
whilst remaining
grounded

Positive
Change





MOMENTS

Developmental Evaluation ... challenges

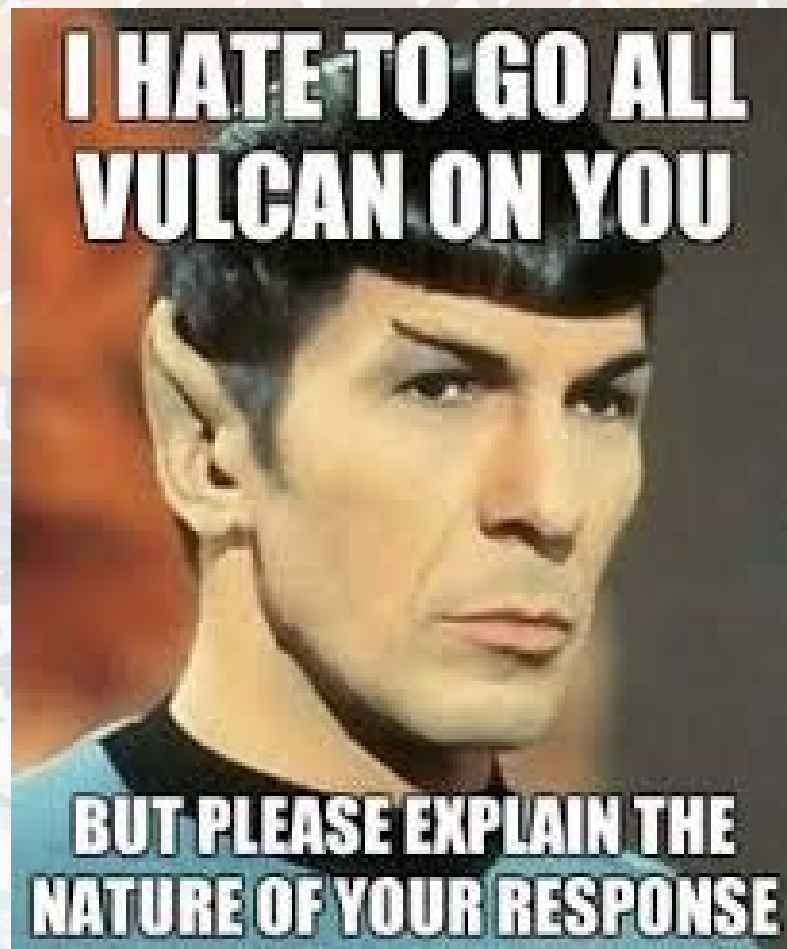
- Wellbeing

- Trust

- Reflective Thinking



Developmental Evaluation ... explaining it



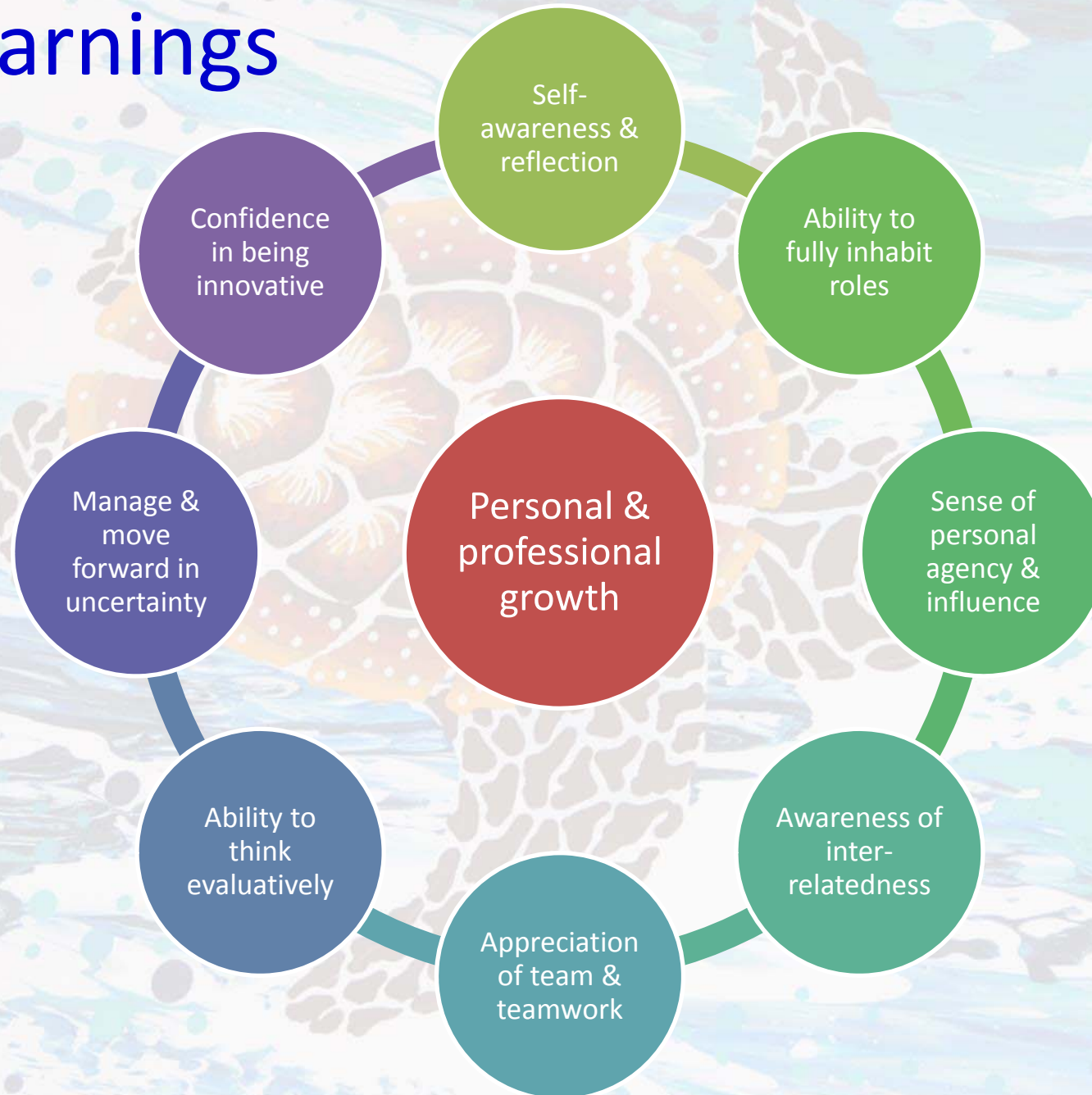
In summary

- Reflective Practice
- Strength and confidence
- Learning that it's ok to redesign

Our learnings



Our learnings



A red autonomous underwater vehicle (AUV) is shown navigating through rough, blue-green waves. The sky is filled with dramatic, dark, and cloudy patterns. The AUV is a sleek, red, conical-shaped vessel with a black base and yellow accents. It is moving from left to right, leaving a white wake behind it. The overall scene conveys a sense of adventure and technological exploration in a challenging environment.

privileging co-creation

Innovation development is inextricably linked to *people* development

A life beyond the particular innovation



Thank you

Questions?

samantha.togni@bigpond.com | Lynne.Rogers2@health.qld.gov.au