



Building Evaluation Capacity from Within the Werry Centre

Maggie Jakob-Hoff and Juliet Bir

AES International Conference 2010 –Wellington NZ

Structure of This Talk

- ❑ Introduction to the Werry Centre
- ❑ Evaluation systems
- ❑ Relationships
- ❑ Outcomes
- ❑ Challenges
- ❑ The song

The Evaluation Team

Maggie



Juliet



The Werry Centre

- Workforce development
- Child and Adolescent Mental Health
- Workshops, conferences, training
- Systems re-design
- Data collection and dissemination

DoView

Develop an On-Line Learning Resource
- opening page

Identify Timeframes

Timeframes identified

Write a Project Plan

Project plan written

Objectives of the resource

To introduce participants to the fundamentals of working with children with mental health issues

Engagement

Development

Assessment

Intervention

To what extent has practice changed as a result of doing the e-learning course? [3 months after course completed - to be developed during the pilot phase]

Strategies

Copyright & Consent Issues

Develop Clinical Content

Translating the Final Content into Moodle

Clarify New Content Headings

Develop & Test Learning Design Options

Hop to Pages

Opening Page

Evaluation Questions

Evaluation Map

DoView

Outputs

- Timeframes identified
- Project plan written
- There is consent for all materials
- All consultation over clinical content has occurred
- All content in place
- New headings clarified
- Headings circulated to the reference group
- Clinical content written to expand on headings
- The resource has been piloted
- Demographic information about participants is collected
- Participants are provided an opportunity to give feedback about their experiences of the course - this includes technical aspects, content, structure, depth, relevance etc
- Participants are surveyed 3 months after they complete the course around the application of learnings
- To what extent has the resource successfully been translated into an electronic format from a technical point of view?

Experience of the resource - pilot only

- To what extent were pilot participants representative of potential users of the resource?
- What do participants think about the tests at the end of each module?
- What do participants think about the technical support provided by the Werry Centre during the pilot?
- What do participants think about the discussion forum around content monitored by the Werry Centre during the pilot?

Experience of resource - live

- How have the participant and supervisor guides been received?
- What do participants think about the discussion forum around content monitored by the Werry Centre?
- What do participants think about the technical support provided by the Werry Centre?
- What do participants think about the tests at the end of each module?
- Participants' experience of the course is positive

Learning outcomes - pilot and live

- To what extent have participants understood the key learnings? [at the end of each modules]
- To what extent has practice changed as a result of doing the e-learning course? [3 months after course completed - to be developed during the pilot phase]
- How well was the covering letter and pack received by pilot participants?

Evaluation Questions Page

Hop to Pages

- Opening Page
- Evaluation Questions
- Evaluation Map

Survey Re-design

Previous questions	Revised questions
Full time equivalent (FTE) clinicians in team	**Total number of clinical hours worked by clinicians
Number of vacancies on the team	Vacancies (FTEs)

**Clinical Hours Worked: Excludes all leave (sick Leave, annual leave, public holidays etc.)

Questionnaire Re-design

Previous scale

I feel the leader's knowledge was.....

Very poor Below average Average Above average

Revised scale

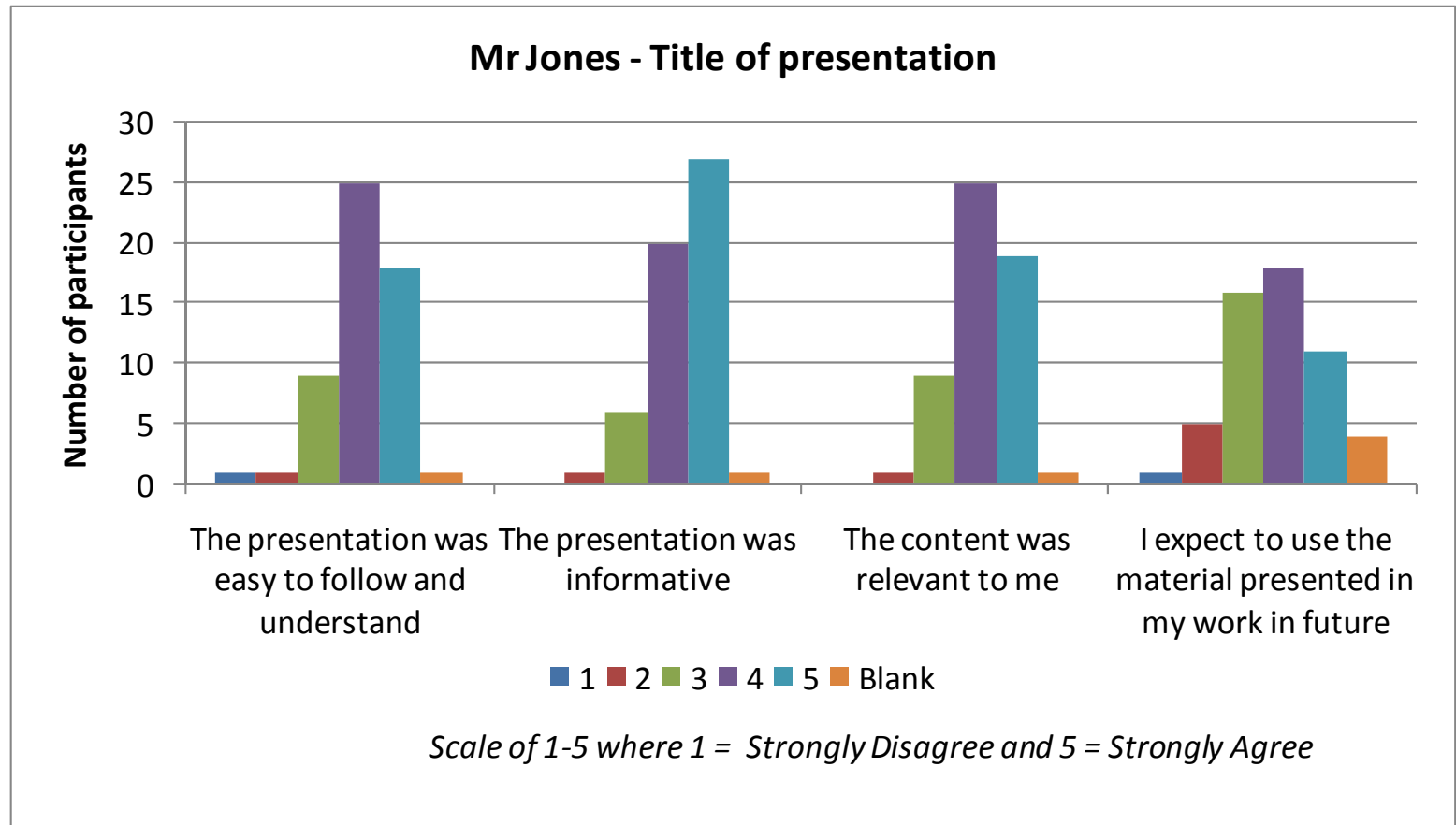
Please indicate the extent of your agreement/ disagreement with the following statements using scale of 1 to 5 where 1 = Strongly disagree and 5 = Strongly agree.

The leader was knowledgeable

Data Processing Re-design

Previous process	Revised process
Counted by hand	Entered into Excel
Data not verifiable	Data verifiable
Crosstabs not possible	Crosstabs possible
Presented in tables	Presented in graphs

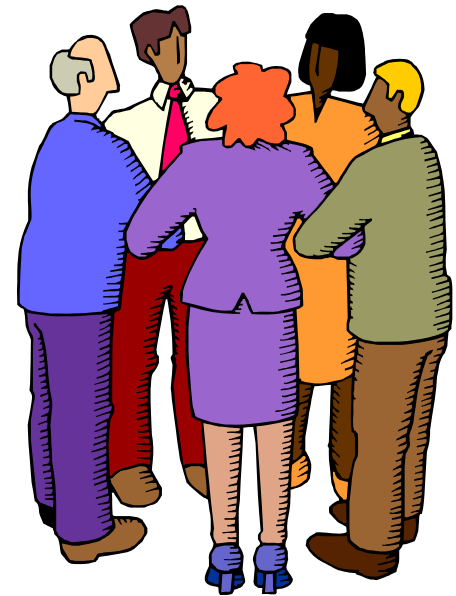
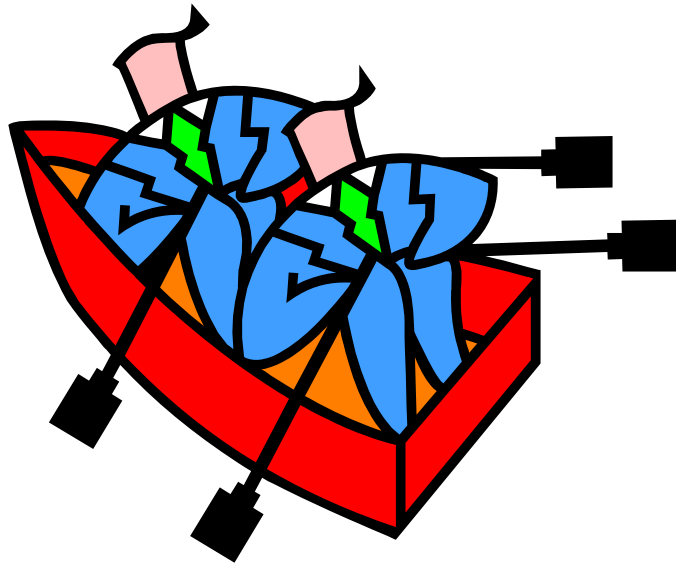
Graphic Presentation



Reporting

- ❑ Designed reporting templates
- ❑ Trained staff on how to use them

Relationships - Professional



Relationships - personal



Outcomes

- More robust evaluation
- Greater focus on impact
- Staff more involved/confident
- Reflecting on findings
- Sense of achievement
- Demonstrating effectiveness
- Shift to “doing it for yourself”

Challenges

- Politics get in the way
- No power to make staff comply
- Time commitment from staff
- Practicing confidentiality

The Song



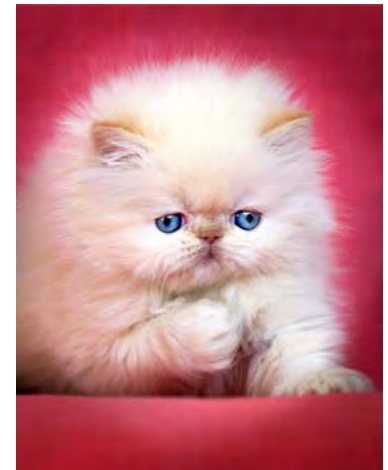
Chorus:

When the fear hits, there's denial

And you're feeling sad

You'll simply remember DoView and us girls

And then you won't feel so bad!





The Werry Centre

for Child and Adolescent Mental Health
Workforce Development

Contact: **Evaluation Team**
Maggie Jakob-Hoff
Julliet Bir
Phone: 09 369 5703

www.werrycentre.org.nz