

# Evaluating NRM programs: An exercise in integration



Dr Alice Roughley

Department of Environment Water Heritage and the Arts

# Presentation overview

- Introduction
- Evaluation challenges in NRM
- Performance Story Reporting
- Integration challenges in PSR
- Integration and Implementation Sciences - Opportunities
- Conclusions
- Questions

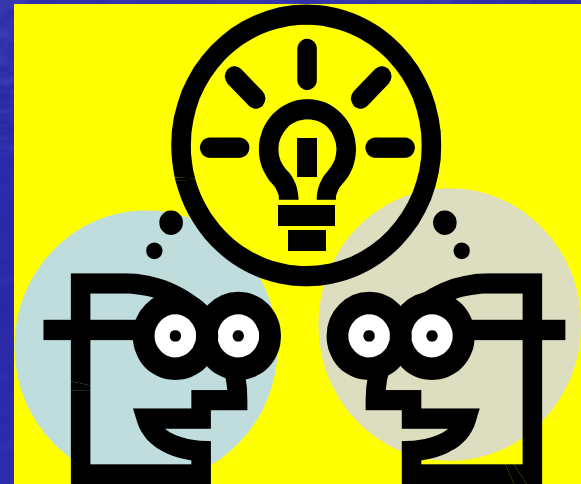
# Evaluation challenges in NRM

- Large number of variables
- Non-standard data collections
- Environmental change takes time
- Different ideas of 'success'
- MERI capacity

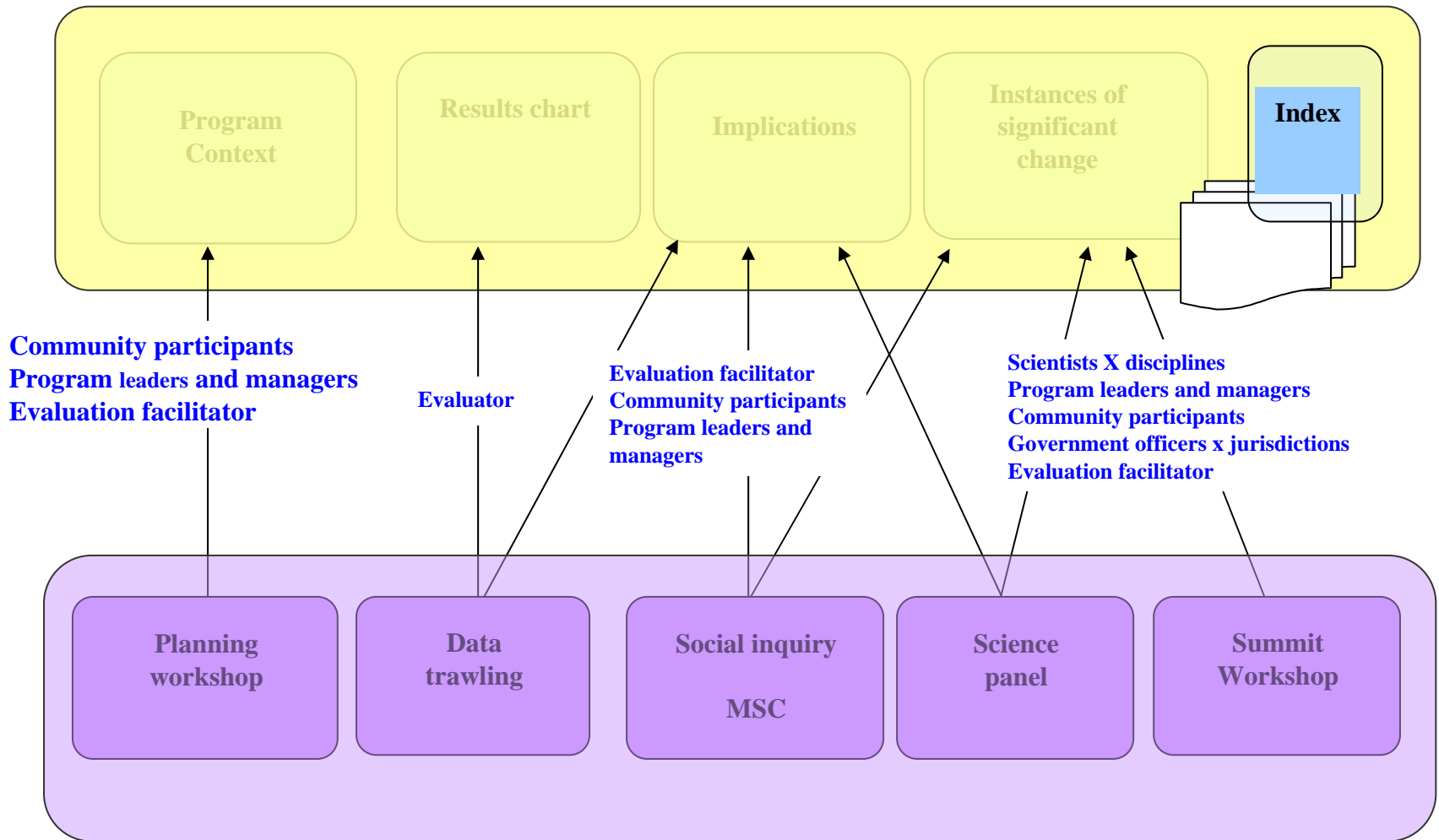


# Performance Story Reporting

- PSR trial in 13 regions across Australia
- What is PSR?
- PSR: parts and steps

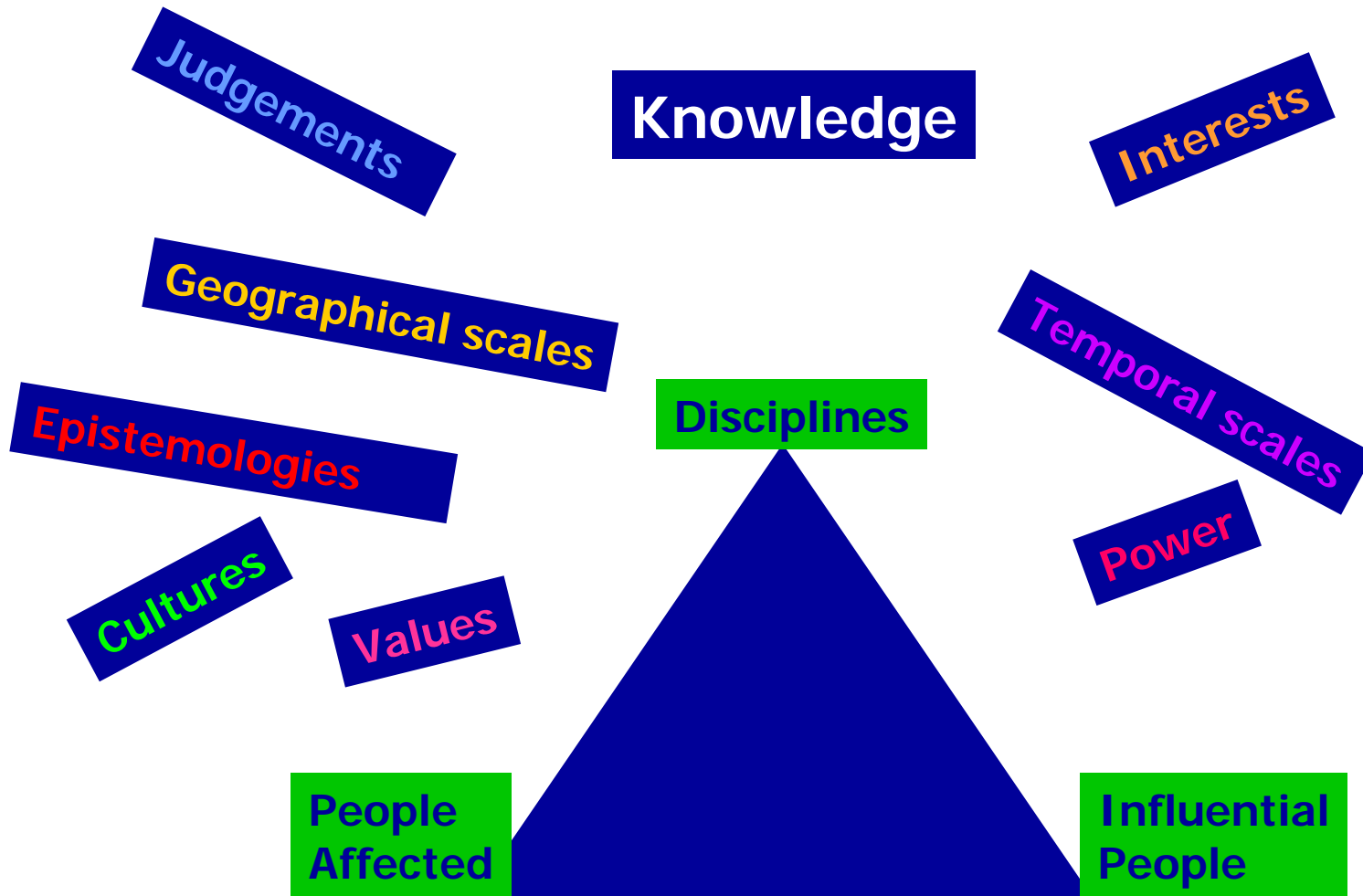


# PSR parts & steps



Adapted from the work of Jessica Dart and John Mayne

# Integration is complex



# Integration challenges in PSR

- Constructing the results chart
- Explaining the findings and implications including findings about cause and effect

# Opportunities





# Integration and Implementation Sciences



- Systematic development of an integration framework

- The 'integrator'



Integration Question	Systems thinking	Integrative methods	Knowledge management/ Ways of knowing
What is being integrated?			
What is the integration aiming to achieve?			
Who is intended to benefit from the integration?			
<b>Who is doing the integration?</b>			
How is the integration being undertaken?			
What is the context for the integration?			
<b>What is the outcome of the integration?</b>			

# Conclusions

- PSR is a highly integrated methodology
- The integration framework and integrators could be used in PSR to address the key methodological challenges

# QUESTIONS

## Relevant websites

**NRM MERI:** [www.nrm.gov.au/publications/frameworks/pubs/meri-framework.pdf](http://www.nrm.gov.au/publications/frameworks/pubs/meri-framework.pdf)

**Integration:** [www.anu.edu.au/iisn](http://www.anu.edu.au/iisn)