

# Outcomes Measurement in Place-based Approaches



The SIMNA Sydney Organising Committee and NSW AES are thrilled to invite you to a hybrid event on the topic of measuring the social impact and evaluating place-based approaches.

### About the Event:

Place-based approaches are a cornerstone of community empowerment, addressing complex local needs effectively. In response to Australia's social, economic, and environmental challenges, these approaches are gaining prominence, with a renewed focus on community-driven solutions.

### What to Expect:

Discover the significance of embedding place-based approaches into Australia's policy, program, and investment structures. Consider approaches that support their implementation, measure impact, and ensure outcomes achievement and effectiveness over time.

This interactive conversation will include a panel discussion from experts in the area:



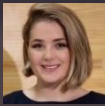
**Lee-Anne Molony**, Clear Horizon Consulting

Lee-Anne is an experienced evaluator, facilitator, and program designer with a strong background in the government, non-government, and private sectors. Specializing in working with diverse organizations, Lee-Anne focuses on applying evaluative thinking to enhance client strategies and programs.



**George Argyrous**, Paul Ramsay Foundation

George is the Head of Measurement, Evaluation, and Learning at Paul Ramsay Foundation, focused on breaking cycles of disadvantage. He has extensive experience in high-level government evaluation frameworks. Currently, he is collaborating with the ACT Government to build whole-of-government evaluation capability



**Rachel Bertram**, University of Technology Sydney

Rachel is a social impact and evaluation specialist. As the co-founder and Manager of the UTS Social Impact Toolbox, she focuses on democratizing access to social impact. Rachel's research explores the integration of ecological and spiritual knowledge in social impact evaluation theory and practice. Rachel works with organizations to plan, evaluate, and report on social impact



**Anna Powell**, CEO of Collaboration for Impact

Anna is the CEO of Collaboration for Impact, with a distinguished leadership track record in international development, philanthropy, cross-sector collaboration, systems innovation, and impact measurement. Anna is a senior respected systems change practitioner with a deep commitment to social change, reconciliation, and equity.

Join us **online or in-person** in Sydney

**4:30pm AEST on the 24th of August,**

**for a 90-minute event**

with post event networking refreshments at

**the EY Office, 200 George St, Sydney**

### Co-facilitated by

**Paula Simoes dos Santos**

Chairwoman, SIMNA Sydney Organising Committee

**Melissa Kaltner**

NSW AES Organising Committee Member & Coordinator of EY's Evaluation Practice Network

### Explore topics such as

Considering the unique nature of place-based initiatives

Providing examples of place-based approaches in action

Impact measurement and evaluation of place-based initiatives

Considering challenges and opportunities in place-based evaluation